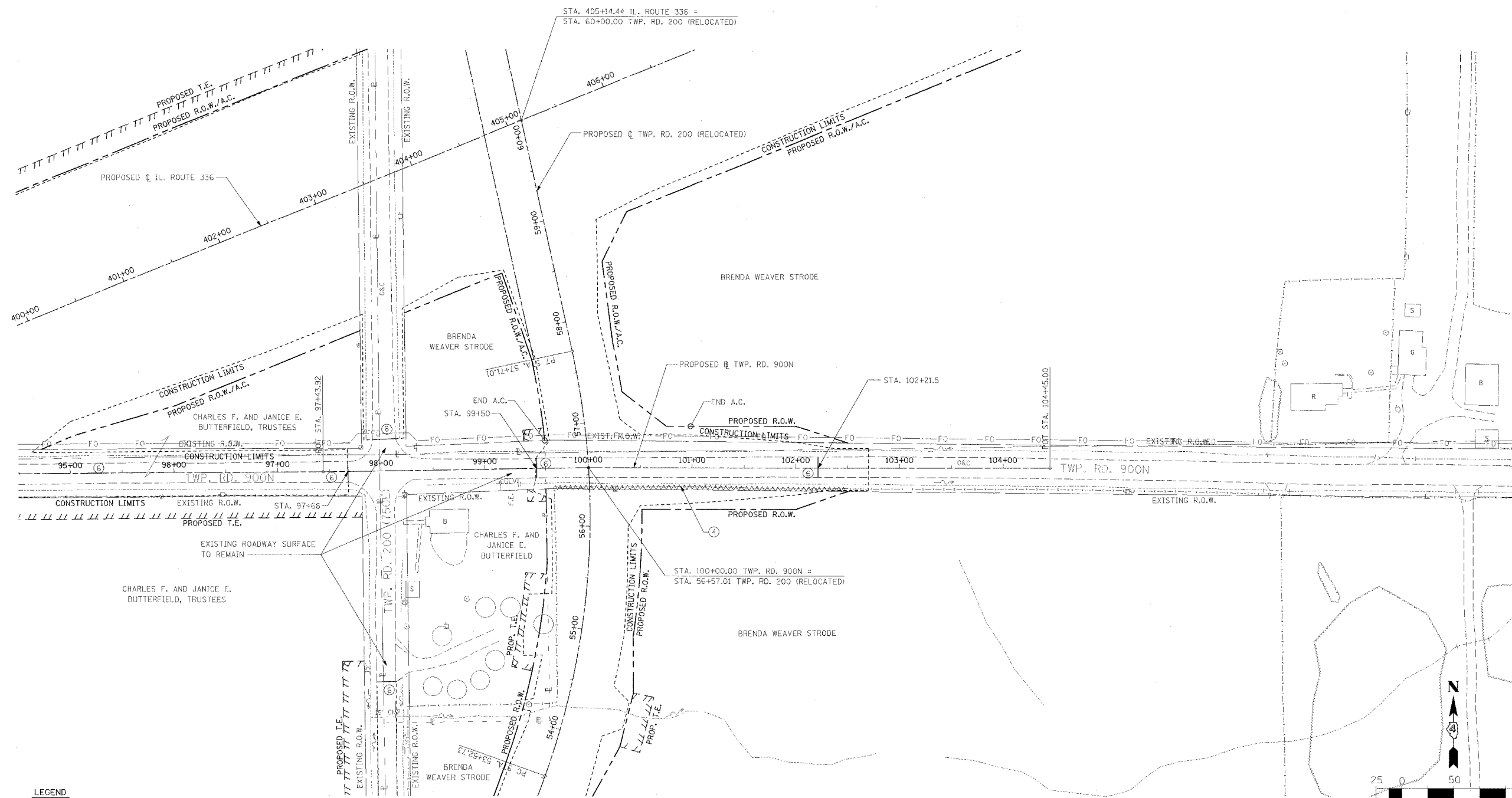


F.A.P. RTE. 315	SECTION 55-2	COUNTY McDONOUGH	TOTAL SHEETS 1025	SHEET NO. 124
STA. 100+00		TO STA. 104+45		
FED. ROAD DIST. NO. 4		ILLINOIS FED. AID PROJECT		

④ FENCE REMOVAL
RT. STA. 99+66 TO RT. STA. 102+50

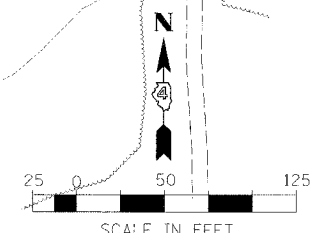


LEGEND

(TWP. RD. 900N (EAST) REMOVAL ONLY)

- ① [Symbol] PAVEMENT REMOVAL INCLUDES FULL-DEPTH AND RIGID PAVEMENT, AND PCC BASE COURSE
- ② [Symbol] BITUMINOUS SURFACE REMOVAL - VARIABLE DEPTH
- ③ [Symbol] TREE REMOVAL, ACRES
- ④ [Symbol] FENCE REMOVAL
- ⑤ [Symbol] FULL-DEPTH AND RIGID PAVEMENT, AND PCC BASE COURSE TO BE BROKEN UP AND LEFT IN PLACE AS PER ARTICLE 205.03 (COST TO BE INCLUDED IN EARTH EXCAVATION)
- [Symbol] TREE REMOVAL
- ⑥ NOTE: FLEXIBLE PAVEMENT (AGGREGATE SURFACE OR BITUMINOUS SURFACE OVER FLEXIBLE BASE) TREATMENT REMOVAL AS PER ARTICLE 205.03 (COST TO BE INCLUDED IN EARTH EXCAVATION)

NOTE: SEE STATUS OF UTILITIES TO BE ADJUSTED FOR FURTHER INFORMATION ON UTILITY CONFLICTS.



REVISIONS	
NAME	DATE

ILLINOIS DEPARTMENT OF TRANSPORTATION
REMOVAL ITEMS
TWP. RD. 900N (EAST)
STA. 100+00 TO STA. 104+00

DATE 3/30/06
DRAWN BY
CHECKED BY