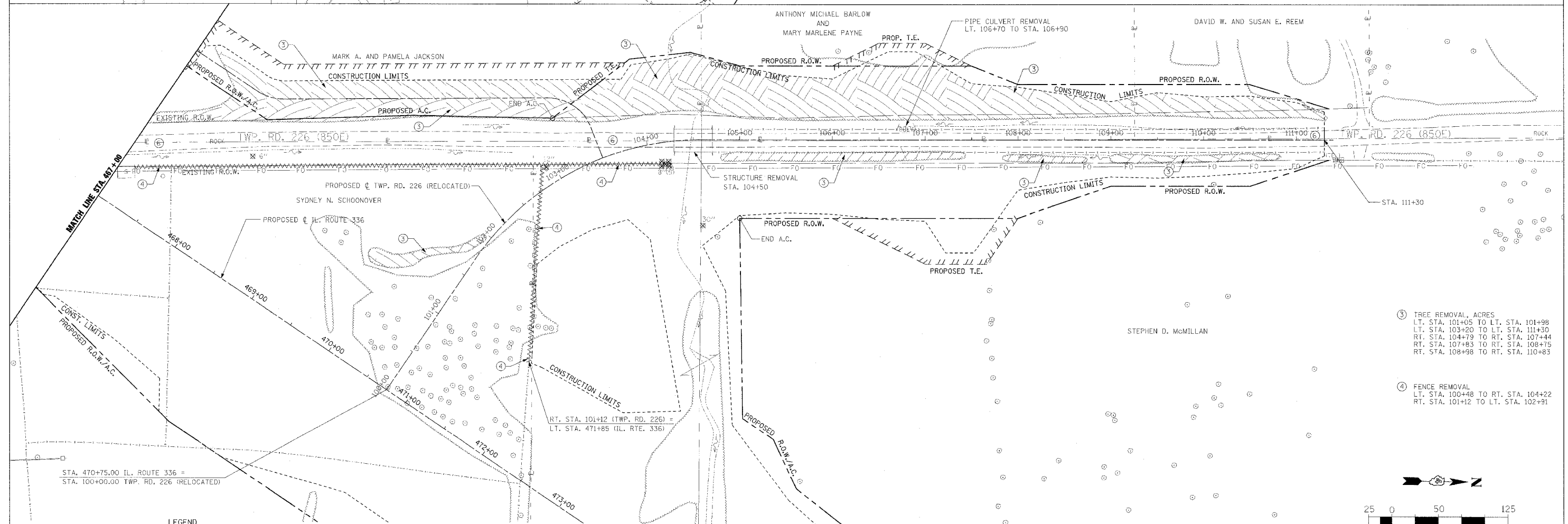
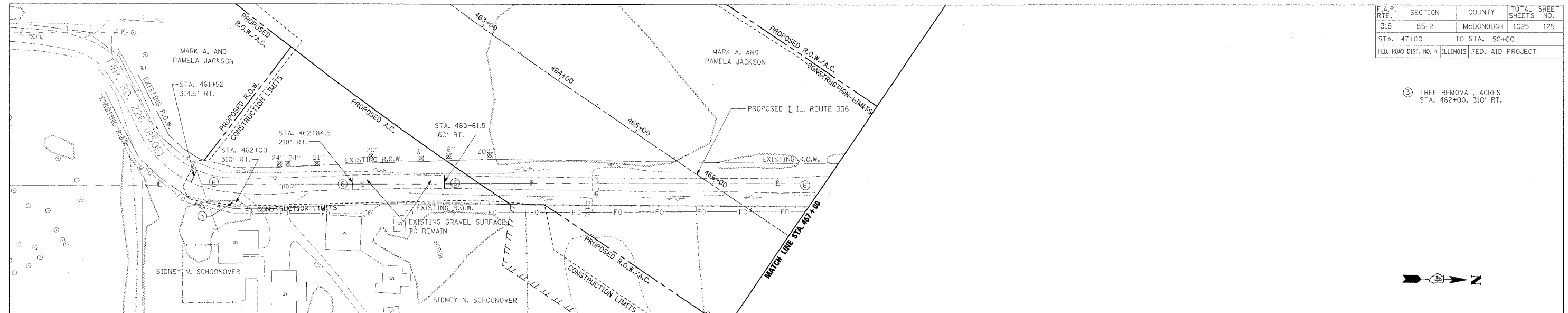


F.A.P. RTE.	SECTION	COUNTY	TOTAL SHEETS	SHEET NO.
315	55-2	McDONOUGH	1025	125
STA. 47+00		TO STA. 50+00		
FED. ROAD DIST. NO. 4 ILLINOIS FED. AID PROJECT				

③ TREE REMOVAL, ACRES
STA. 462+00, 310' RT.



③ TREE REMOVAL, ACRES
LT. STA. 101+05 TO LT. STA. 101+98
LT. STA. 103+20 TO LT. STA. 111+30
RT. STA. 104+79 TO RT. STA. 107+44
RT. STA. 107+83 TO RT. STA. 108+75
RT. STA. 108+98 TO RT. STA. 110+83

④ FENCE REMOVAL
LT. STA. 100+48 TO RT. STA. 104+22
RT. STA. 101+12 TO LT. STA. 102+91



- LEGEND**
- (TWP. RD. 226 (RELOCATED) REMOVAL ONLY)
- ① [Hatched Box] PAVEMENT REMOVAL INCLUDES FULL-DEPTH AND RIGID PAVEMENT, AND PCC BASE COURSE
 - ② [Hatched Box] BITUMINOUS SURFACE REMOVAL - VARIABLE DEPTH
 - ③ [Hatched Box] TREE REMOVAL, ACRES
 - ④ [Wavy Line] FENCE REMOVAL
 - ⑤ [Hatched Box] FULL-DEPTH AND RIGID PAVEMENT, AND PCC BASE COURSE TO BE BROKEN UP AND LEFT IN PLACE AS PER ARTICLE 205.03 (COST TO BE INCLUDED IN EARTH EXCAVATION)
 - ⑥ [Hatched Box] NOTE: FLEXIBLE PAVEMENT (AGGREGATE SURFACE OR BITUMINOUS SURFACE OVER FLEXIBLE BASE) TREATMENT REMOVAL AS PER ARTICLE 205.03 (COST TO BE INCLUDED IN EARTH EXCAVATION)
 - [Tree Symbol] TREE REMOVAL

NOTE: SEE STATUS OF UTILITIES TO BE ADJUSTED FOR FURTHER INFORMATION ON UTILITY CONFLICTS.

REVISIONS	
NAME	DATE

ILLINOIS DEPARTMENT OF TRANSPORTATION

REMOVAL ITEMS
TWP. RD. 226 (RELOCATED)
STA. 100+00 TO STA. 111+00

DATE 3/30/06

DRAWN BY
CHECKED BY