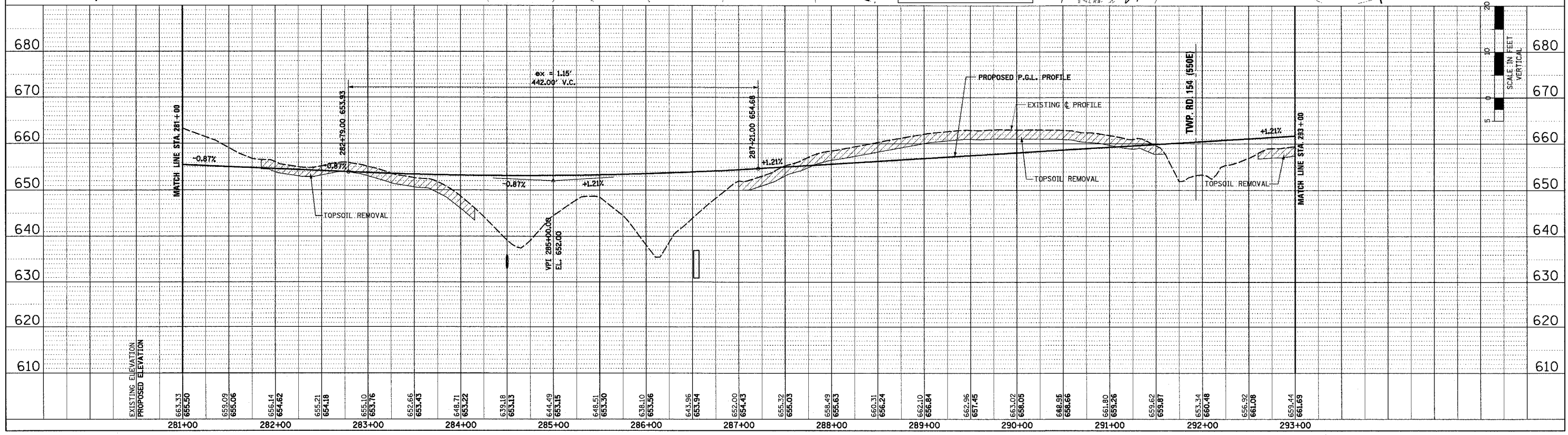
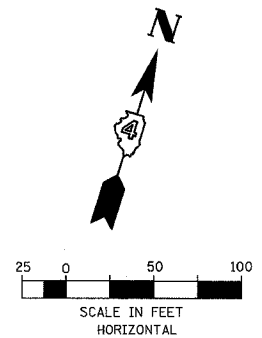
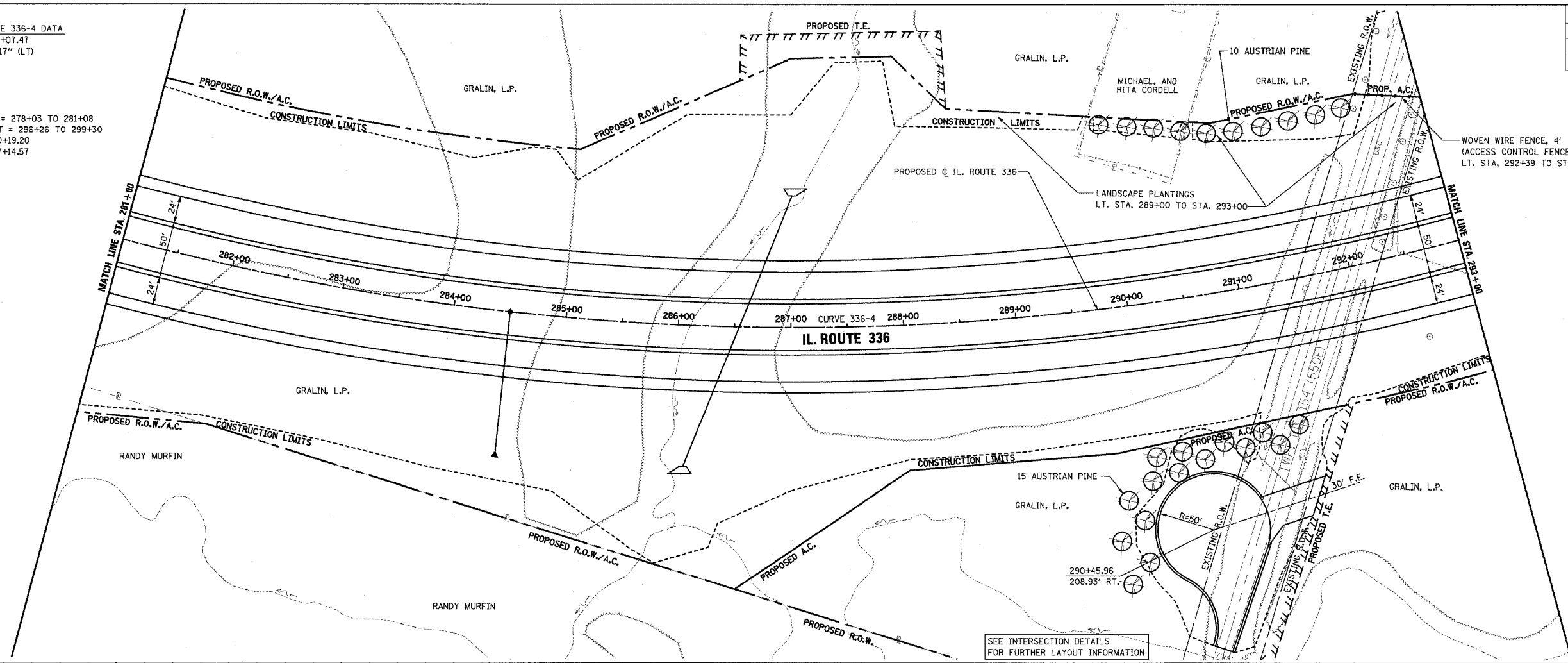


F.A.P. RTE.	SECTION	COUNTY	TOTAL SHEETS	SHEET NO.
315	55-2	McDONOUGH	1025	140
STA. 281+00		TO STA. 293+00		
FED. ROAD DIST. NO. 4 ILLINOIS FED. AID PROJECT				

PROPOSED CURVE 336-4 DATA
 P.I. STA. = 289+07.47
 $\Delta = 42^\circ 14' 01.17''$ (LT)
 R = 2,300'
 T = 888.27'
 L = 1,695.37'
 E = 165.57'
 S.E. = 5.90%
 TRANSITION IN = 278+03 TO 281+08
 TRANSITION OUT = 296+26 TO 299+30
 P.C. STA. = 280+19.20
 P.T. STA. = 297+14.57

PLAN	DATE	BY
DESIGNED		
PLOTTED		
CHECKED		
NO. OF WAY CHECKED		
ADD FILE NAME		

PROFILE	DATE	BY
DESIGNED		
PLOTTED		
CHECKED		
NO. OF WAY CHECKED		
STRUCTURE NOTATIONS CHECKED		



ROADWAY PLAN AND PROFILE - IL. ROUTE 336 - STA. 281+00 TO STA. 293+00

3/28/2016 2:26:43 PM