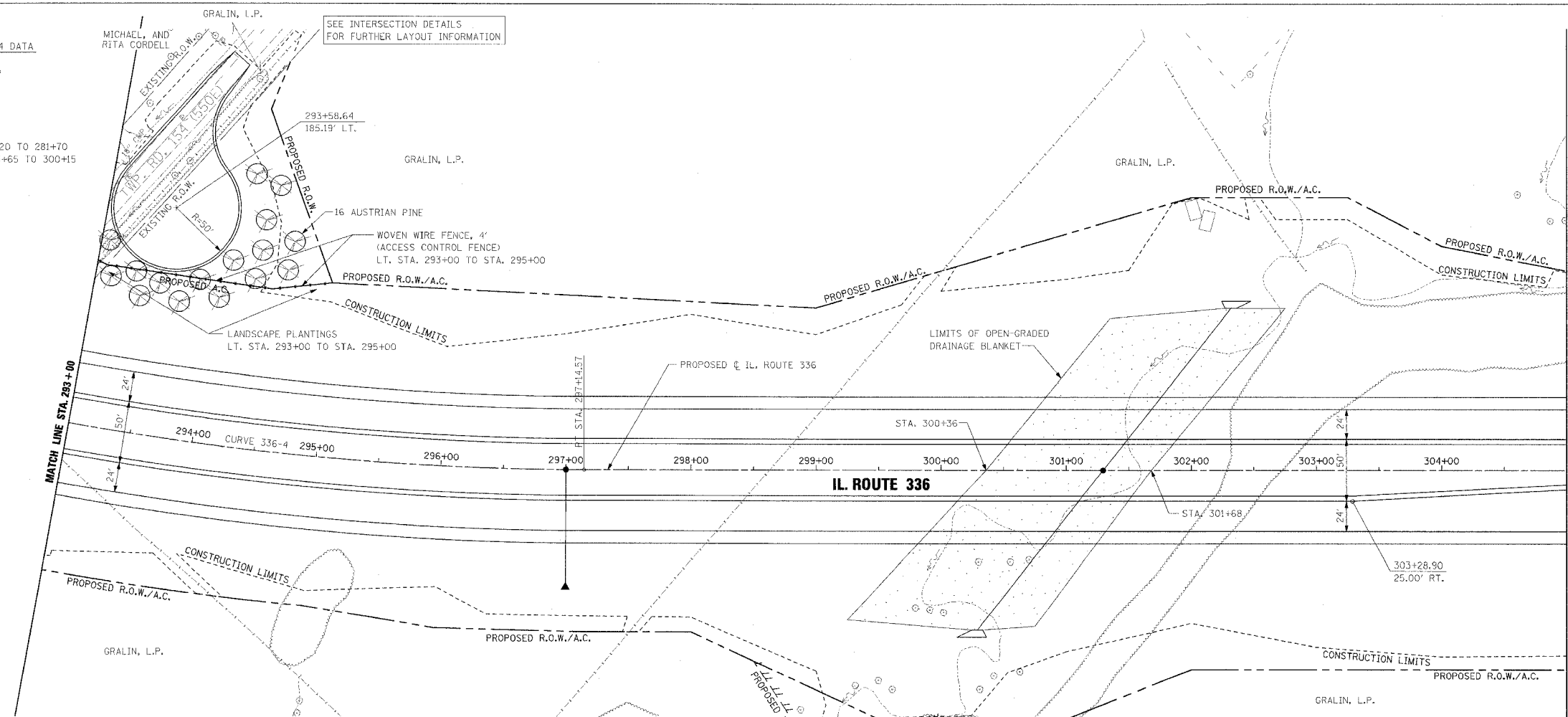


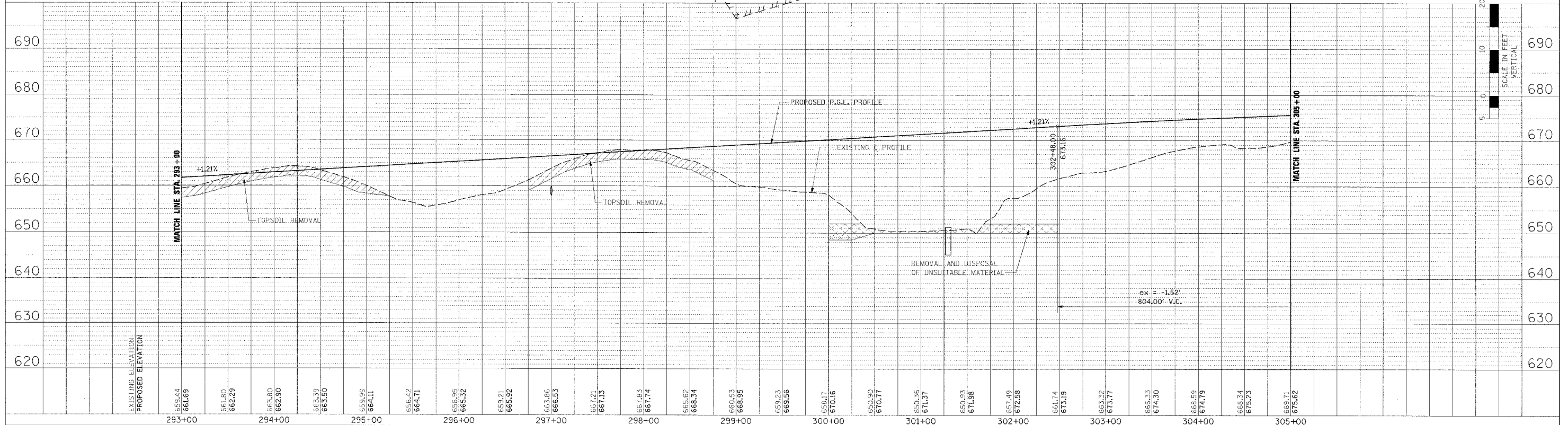
F.A.P. RTE.	SECTION	COUNTY	TOTAL SHEETS	SHEET NO.
315	55-2	McDONOUGH	1025	141
STA. 293+00		TO STA. 305+00		
FED. ROAD DIST. NO. 4 ILLINOIS FED. AID PROJECT				

PROPOSED CURVE 336-4 DATA
 P.I. STA. = 289+07.47
 $\Delta = 42^\circ 14' 01.17''$ (LT)
 $R = 2,300'$
 $T = 888.27'$
 $L = 1,695.37'$
 $E = 165.57'$
 $S.E. = 5.90\%$
 TRANSITION IN = 277+20 TO 281+70
 TRANSITION OUT = 295+65 TO 300+15
 P.C. STA. = 280+19.20
 P.T. STA. = 297+14.57



DATE	BY	REVISION

DATE	BY	REVISION



ROADWAY PLAN AND PROFILE - IL. ROUTE 336 - STA. 293+00 TO STA. 305+00