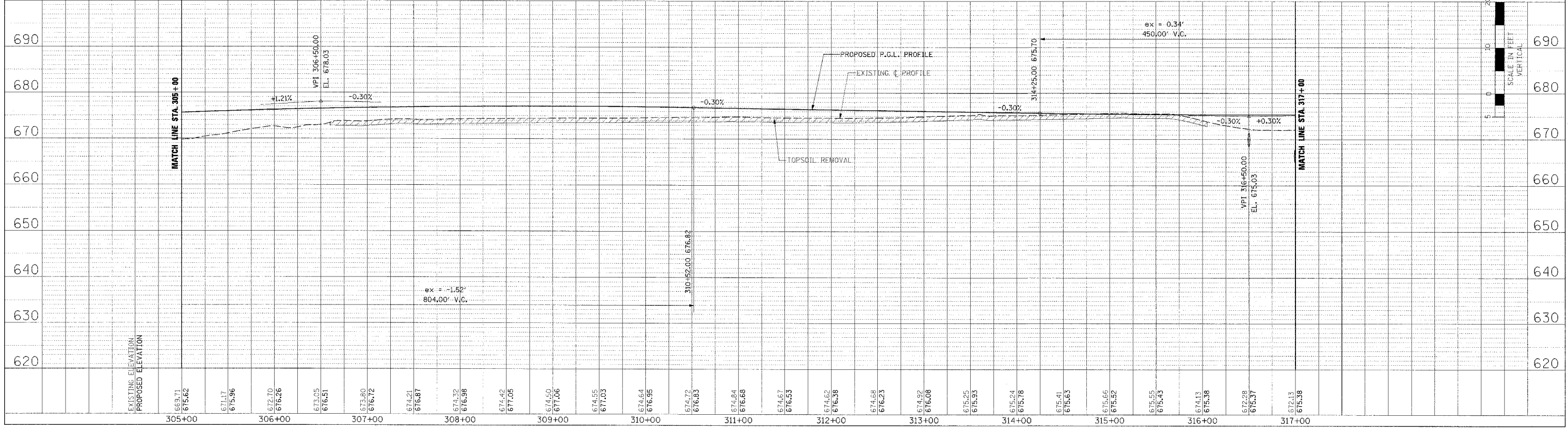
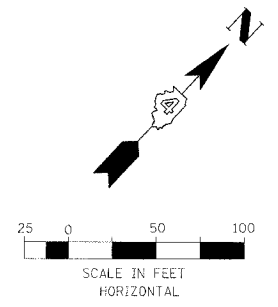
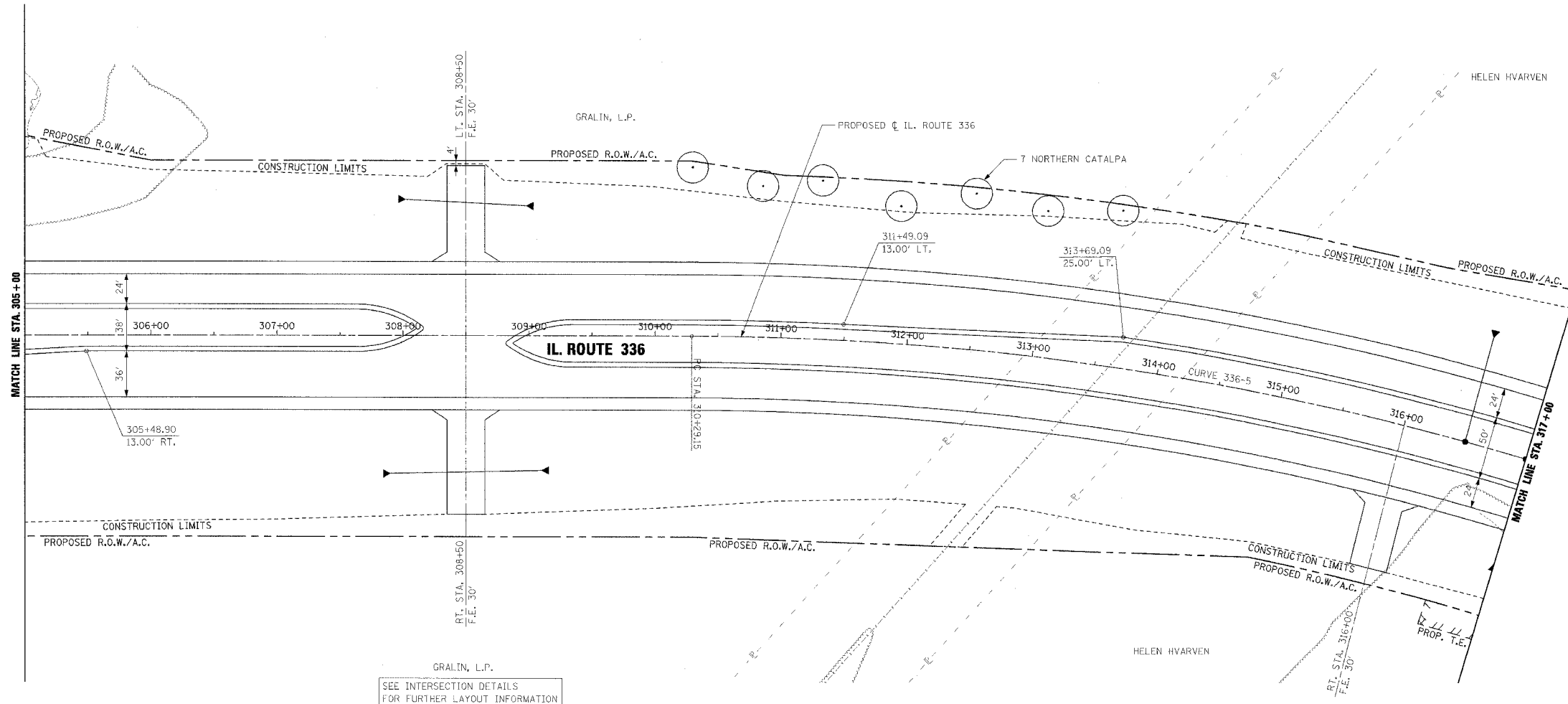


F.A.P. RTE.	SECTION	COUNTY	TOTAL SHEETS	SHEET NO.
315	55-2	McDONOUGH	1025	142
STA. 305+00		TO STA. 317+00		
FED. ROAD DIST. NO. 4		ILLINOIS FED. AID PROJECT		

PROPOSED CURVE 336-5 DATA  
P.I. STA. = 316+52.94  
 $\Delta = 30^\circ 20' 55.90''$  (RT)  
R = 2,300'  
T = 623.79'  
L = 1,218.28'  
E = 83.09'  
S.E. = 5.90%  
TRANSITION IN = 308+13 TO 311+18  
TRANSITION OUT = 321+59 TO 324+63  
P.C. STA. = 310+29.15  
P.T. STA. = 322+47.43

PLAN	DATE
BY	
NO. 1	
NO. 2	
NO. 3	
NO. 4	
NO. 5	
NO. 6	
NO. 7	
NO. 8	
NO. 9	
NO. 10	

PROFILE	DATE
BY	
NO. 1	
NO. 2	
NO. 3	
NO. 4	
NO. 5	
NO. 6	
NO. 7	
NO. 8	
NO. 9	
NO. 10	



ROADWAY PLAN AND PROFILE - IL. ROUTE 336 - STA. 305+00 TO STA. 317+00