

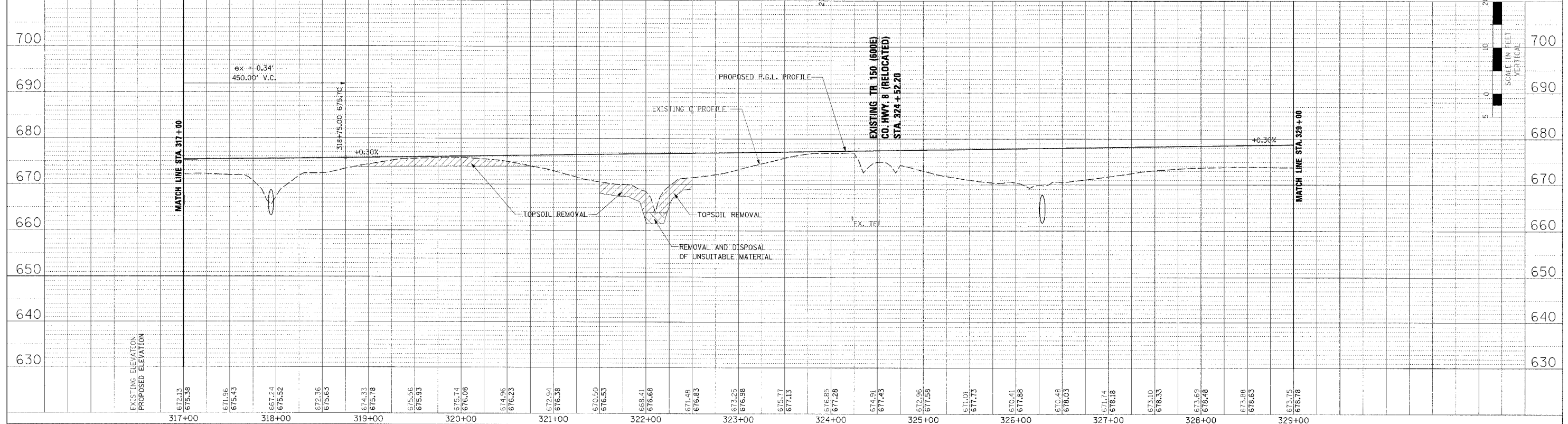
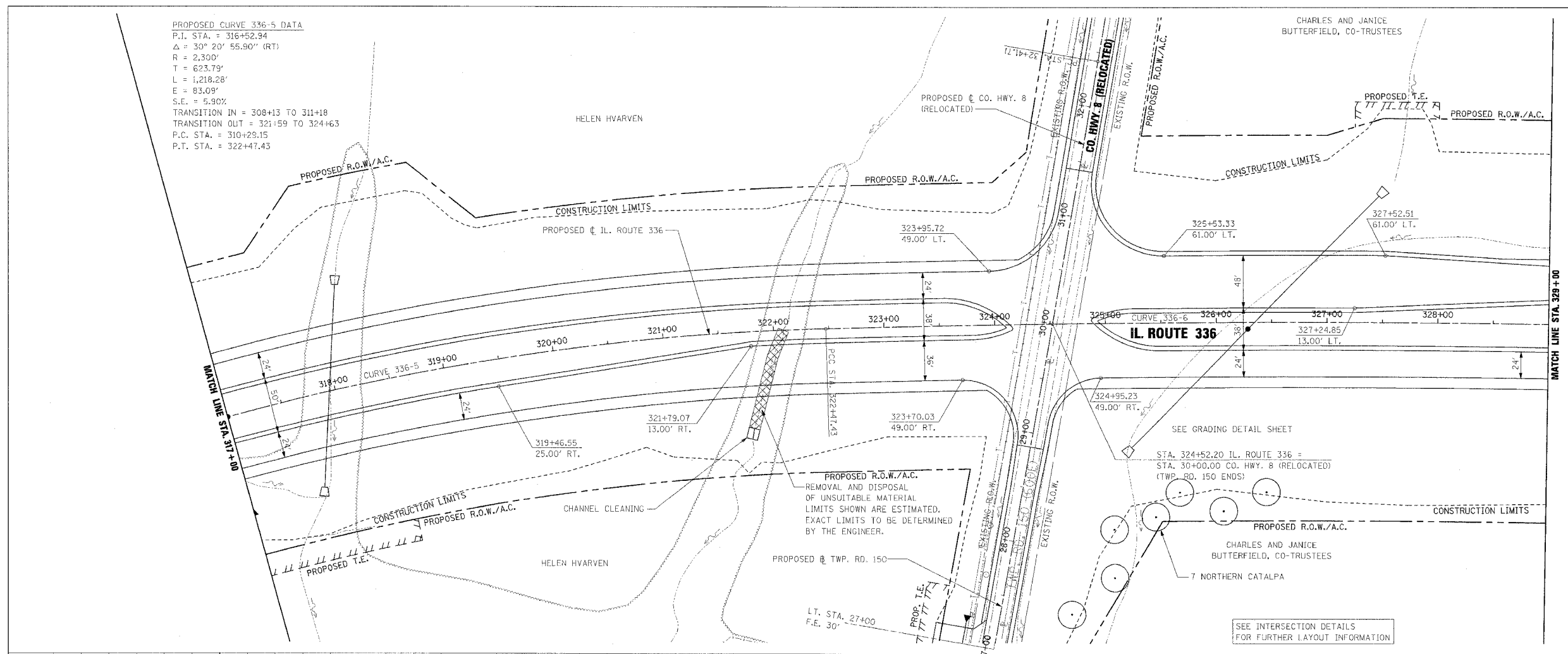
PROPOSED CURVE 336-5 DATA
 P.I. STA. = 316+52.94
 $\Delta = 30^\circ 20' 55.90''$ (RT)
 $R = 2,300'$
 $T = 623.79'$
 $L = 1,218.28'$
 $E = 83.09'$
 $S.E. = 5.90\%$
 TRANSITION IN = 308+13 TO 311+18
 TRANSITION OUT = 321+59 TO 324+63
 P.C. STA. = 310+29.15
 P.T. STA. = 322+47.43

| F.A.P. RITE | SECTION | COUNTY | TOTAL SHEETS | SHEET NO. |
|---|---------|----------------|--------------|-----------|
| 315 | 55-2 | MCDONOUGH | 1025 | 143 |
| STA. 317+00 | | TO STA. 329+00 | | |
| FED. ROAD DIST. NO. 4 ILLINOIS FED. AID PROJECT | | | | |

PROPOSED CURVE 336-6 DATA
 P.I. STA. = 339+78.20
 $\Delta = 13^\circ 25' 48.37''$ (RT)
 $R = 14,700'$
 $T = 1,730.77'$
 $L = 3,445.67'$
 $E = 101.54'$
 P.C.C. STA. = 322+47.43
 P.T. STA. = 356+93.10

| DATE | BY |
|------|----|
| | |
| | |

| DATE | BY |
|------|----|
| | |
| | |



ROADWAY PLAN AND PROFILE - IL. ROUTE 336 - STA. 317+00 TO STA. 329+00