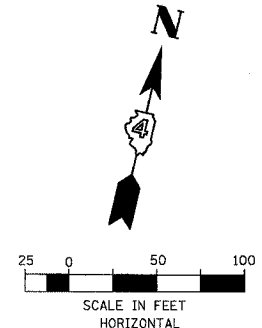
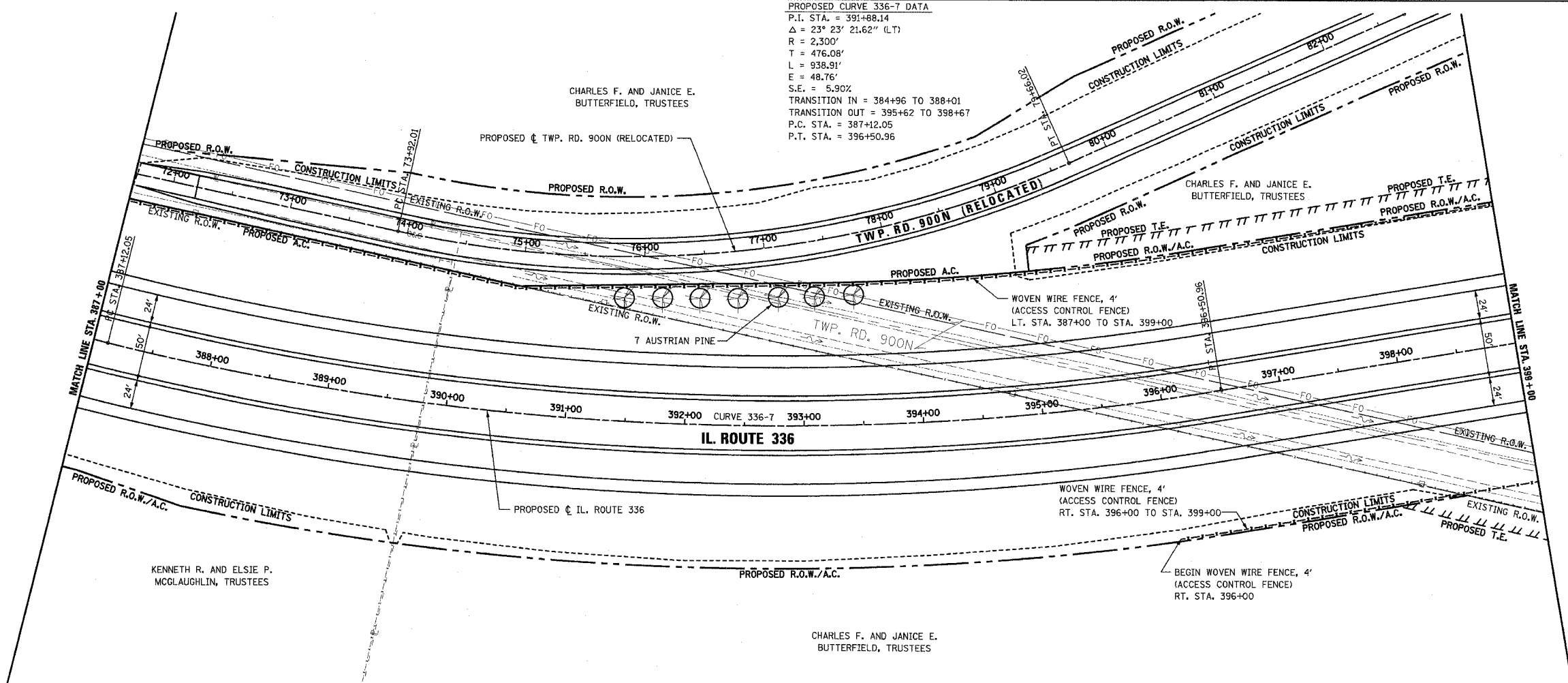


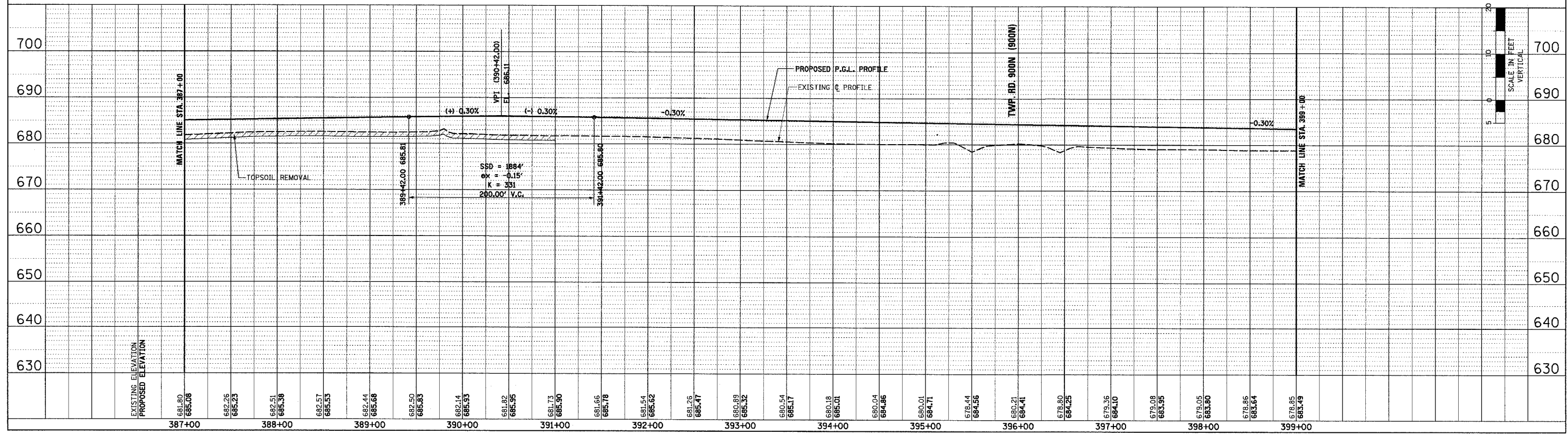
F.A.P. RTE.	SECTION	COUNTY	TOTAL SHEETS	SHEET NO.
315	55-2	McDONOUGH	1025	149
STA. 387+00		TO STA. 399+00		
FED. ROAD DIST. NO. 4 ILLINOIS FED. AID PROJECT				

PROPOSED CURVE 336-7 DATA
 P.I. STA. = 391+88.14
 $\Delta = 23^\circ 23' 21.62''$ (LT)
 R = 2,300'
 T = 476.08'
 L = 938.91'
 E = 48.76'
 S.E. = 5.90%
 TRANSITION IN = 384+96 TO 388+01
 TRANSITION OUT = 395+62 TO 398+67
 P.C. STA. = 387+12.05
 P.T. STA. = 396+50.96



DATE	BY	REVISION
		REVISED
		PLANNED
		NOTED
		PROFILES CHECKED
		ALIGNMENT CHECKED
		STRUCTURE NOTATIONS OK'D
		NO. _____
		DATE _____

DATE	BY	REVISION
		REVISED
		PLANNED
		NOTED
		PROFILES CHECKED
		ALIGNMENT CHECKED
		STRUCTURE NOTATIONS OK'D
		NO. _____
		DATE _____



ROADWAY PLAN AND PROFILE - IL. ROUTE 336 - STA. 387+00 TO STA. 399+00

3/26/2006 4:17:20 PM 15 24