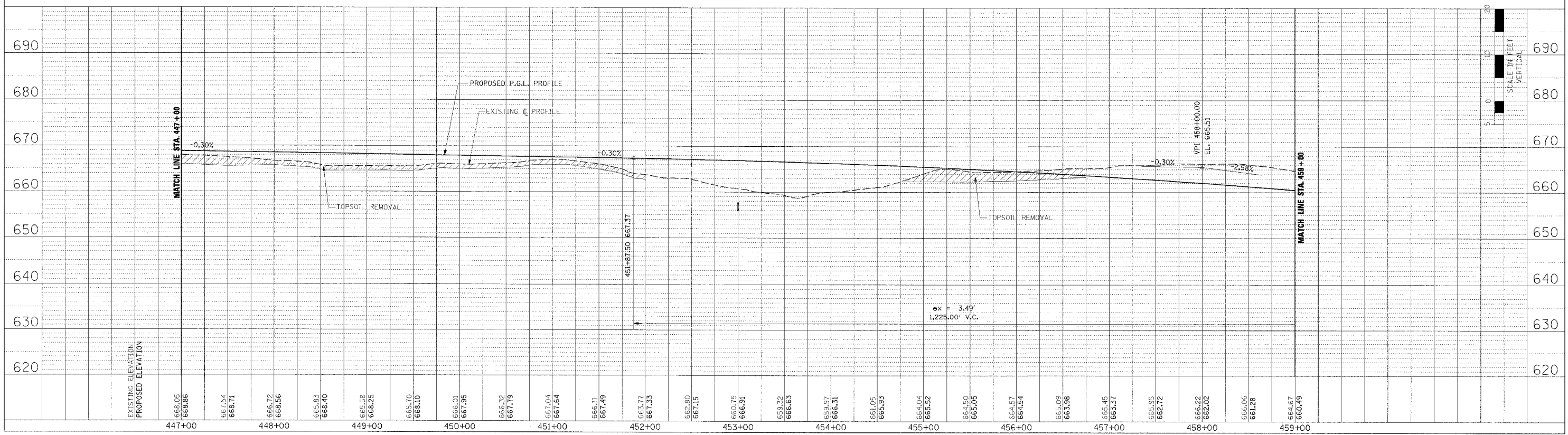
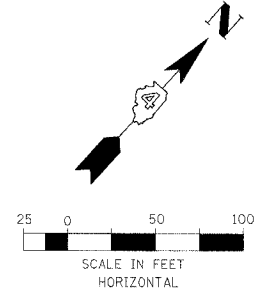
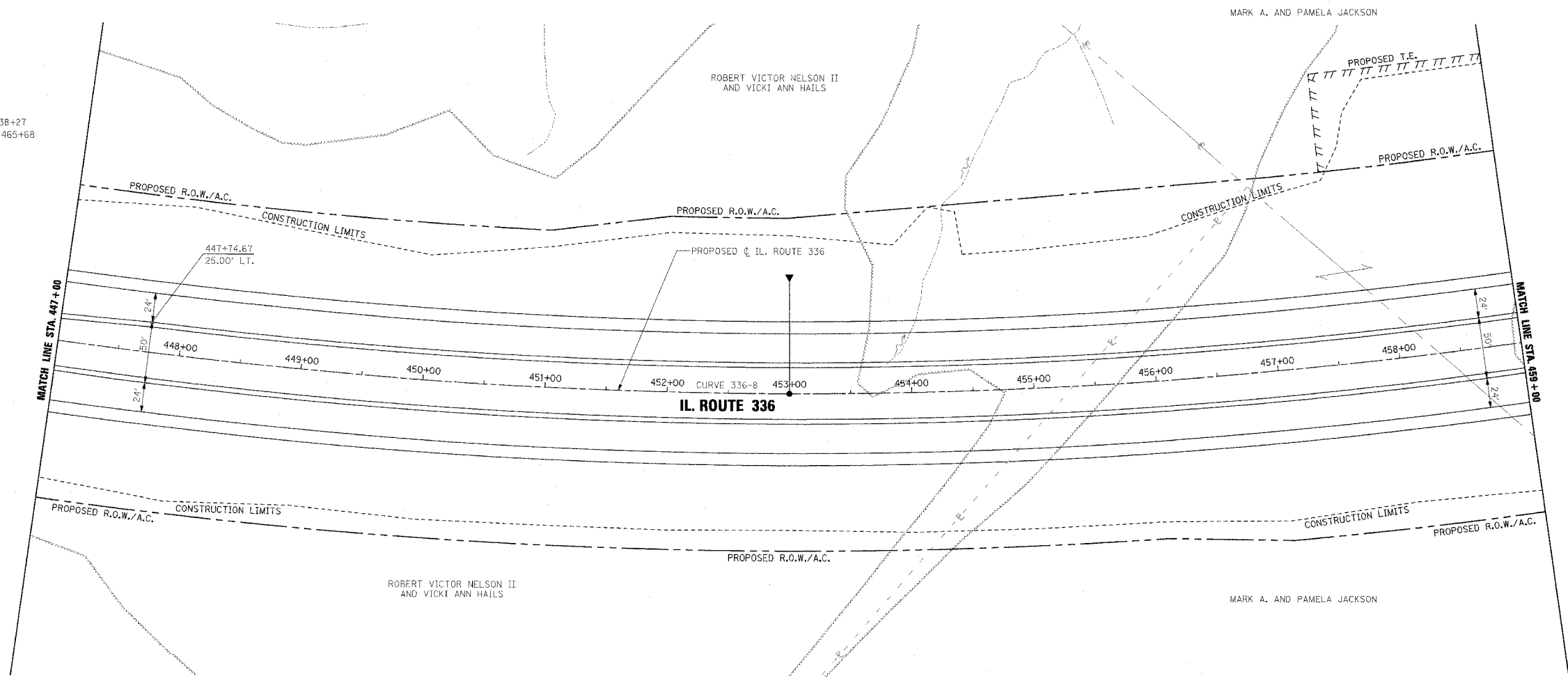


PROPOSED CURVE 336-B DATA
 P.I. STA. = 451+74.90
 $\Delta = 34^{\circ} 14' 13.54''$ (L.T.)
 $R = 4,250'$
 $T = 1,308.98'$
 $L = 2,539.59'$
 $E = 197.01'$
 $S.E. = 4.20\%$
 TRANSITION IN = 437+02 TO 438+27
 TRANSITION OUT = 463+45 TO 465+68
 P.C. STA. = 438+65.92
 P.T. STA. = 464+05.51

F.A.P. RTE.	SECTION	COUNTY	TOTAL SHEETS	SHEET NO.
315	55-2	McDONOUGH	1025	154
STA. 447+00		TO STA. 459+00		
FED. ROAD DIST. NO. 4 ILLINOIS FED. AID PROJECT				

PLAN	DATE
BY	
REVISIONS	
NO.	DESCRIPTION
1	AS NOTED
2	AS NOTED
3	AS NOTED
4	AS NOTED
5	AS NOTED

PROFILE	DATE
BY	
REVISIONS	
NO.	DESCRIPTION
1	AS NOTED
2	AS NOTED
3	AS NOTED
4	AS NOTED
5	AS NOTED



ROADWAY PLAN AND PROFILE - IL. ROUTE 336 - STA. 447+00 TO STA. 459+00