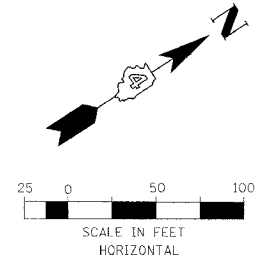
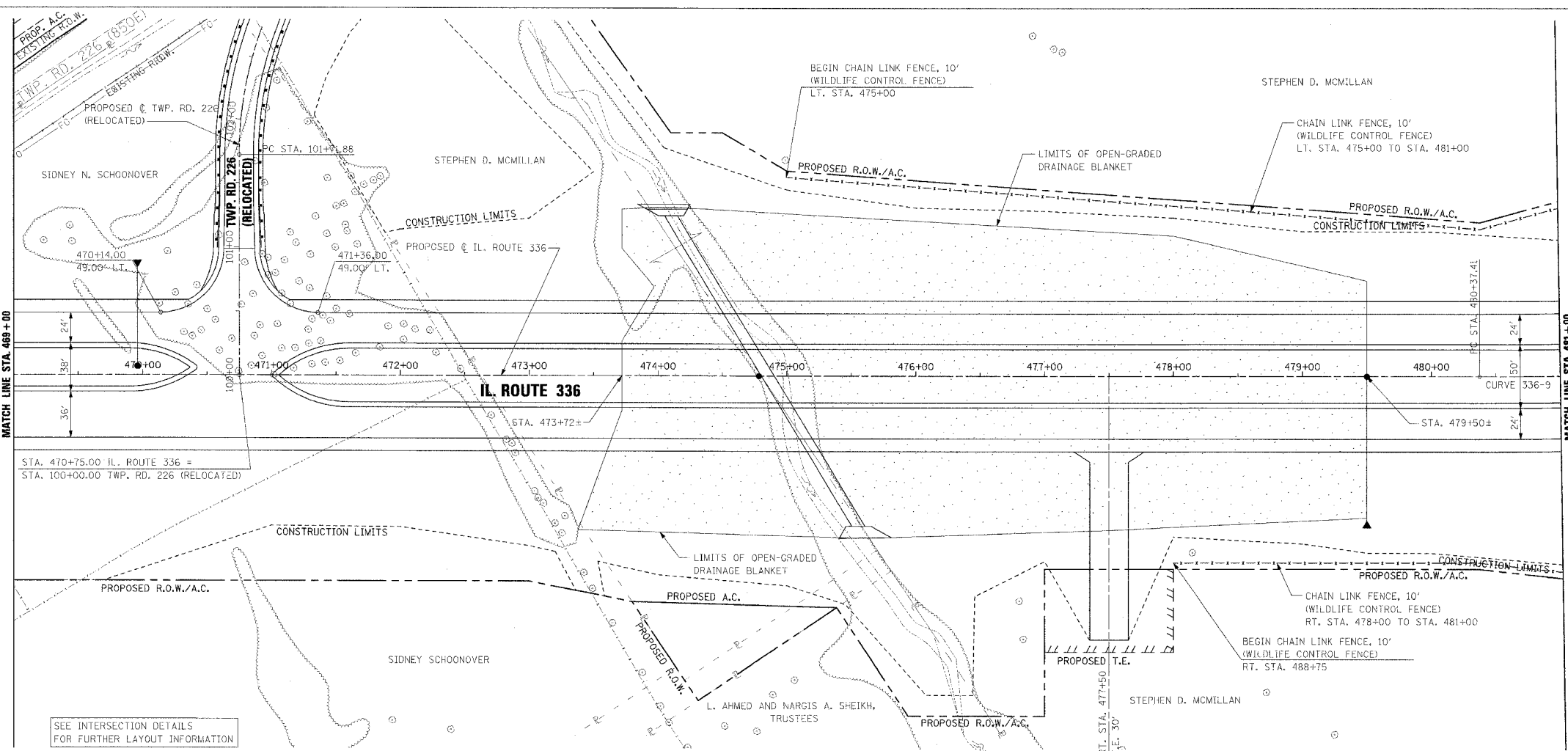


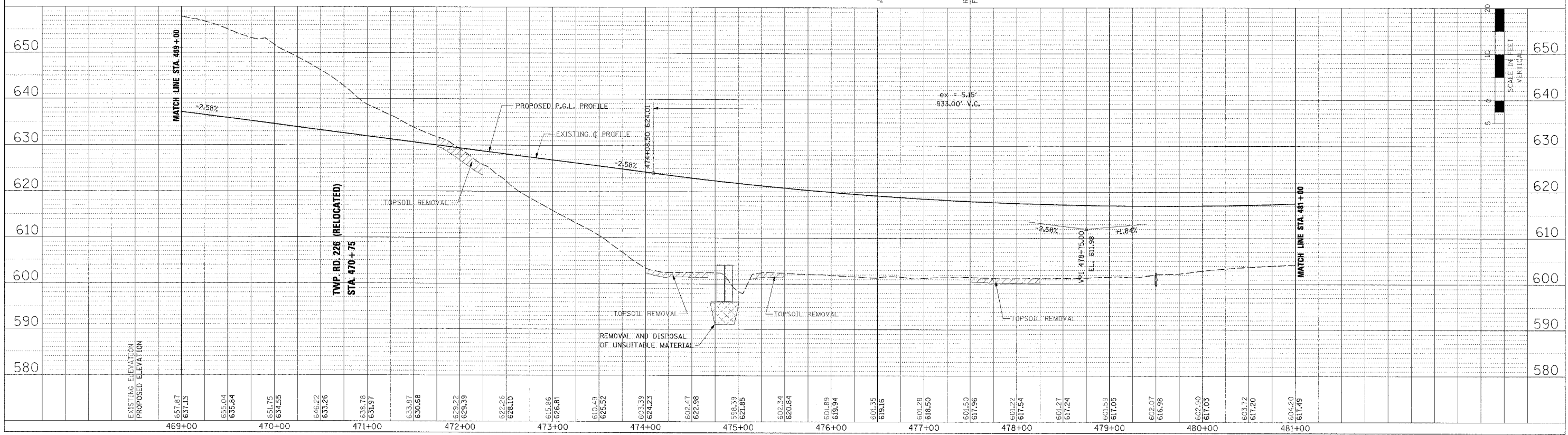
| F.A.P. RTE. | SECTION | COUNTY | TOTAL SHEETS | SHEET NO. |
|---|---------|----------------|--------------|-----------|
| 315 | 55-2 | MCDONOUGH | 1025 | 156 |
| STA. 469+00 | | TO STA. 481+00 | | |
| FED. ROAD DIST. NO. 4 ILLINOIS FED. AID PROJECT | | | | |

PROPOSED CURVE 336-9 DATA
P.I. STA. = 492+70.91
 $\Delta = 32^\circ 22' 09.34''$ (LT)
R = 4,250'
T = 1,233.50'
L = 2,401.04'
E = 175.38'
S.E. = 4.20%
TRANSITION IN = 478+74 TO 480+98
TRANSITION OUT = 503+77 TO 506+01
P.C. STA. = 480+37.41
P.T. STA. = 504+38.45



| PLAN | DATE |
|------------|------|
| DESIGNED | |
| PLOTTED | |
| POSTED | |
| INSTRUMENT | |
| BY | |
| NO. | |

| PROFILE | DATE |
|------------|------|
| DESIGNED | |
| PLOTTED | |
| POSTED | |
| INSTRUMENT | |
| BY | |
| NO. | |



ROADWAY PLAN AND PROFILE - IL. ROUTE 336 - STA. 469+00 TO STA. 481+00