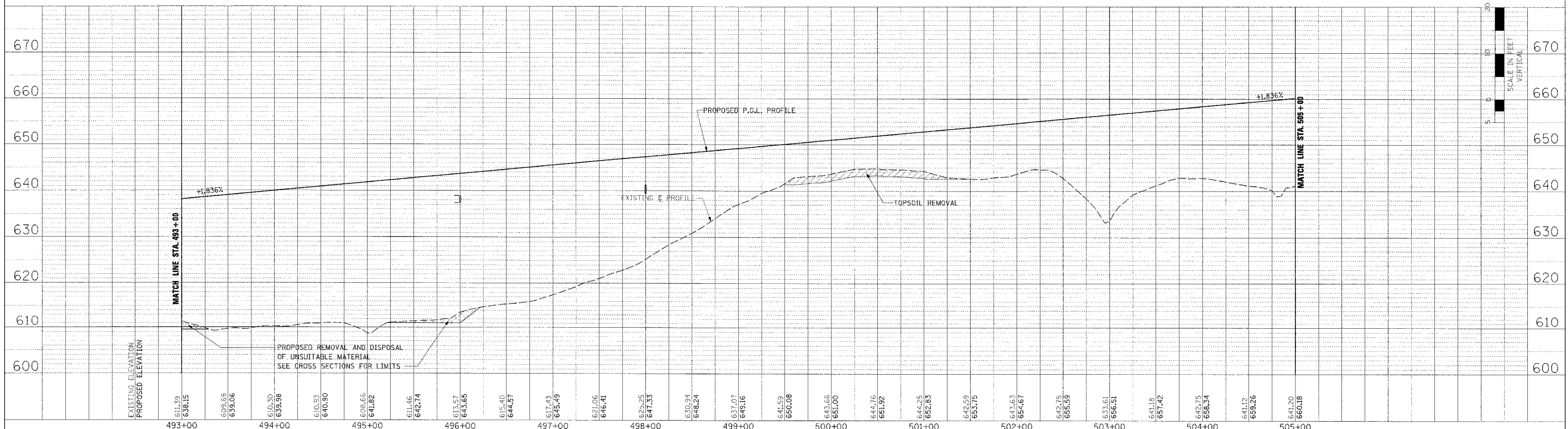
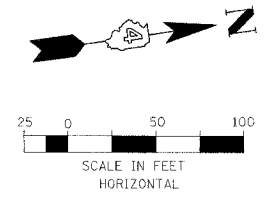
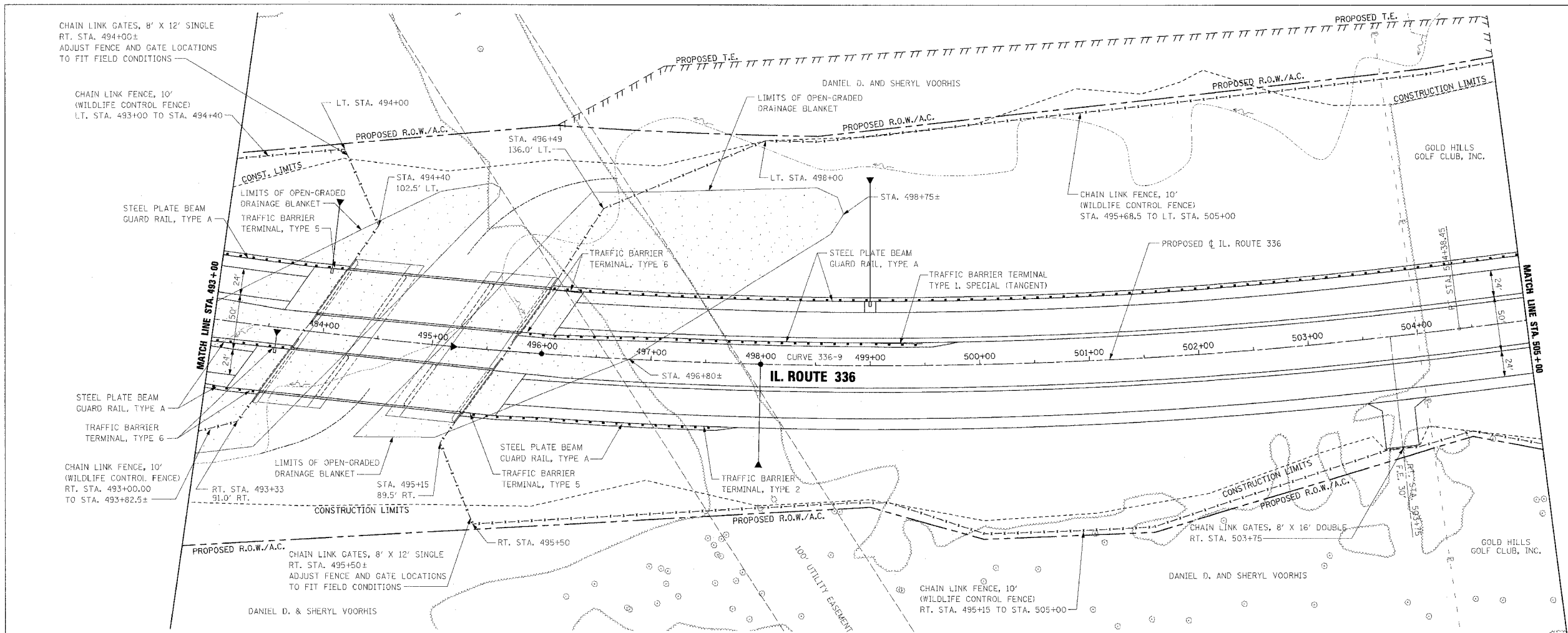


F.A.P. RTE.	SECTION	COUNTY	TOTAL SHEETS	SHEET NO.
315	55-2	McDONOUGH	1025	158
STA. 493+00		TO STA. 505+00		
FED. ROAD DIST. NO. 4 ILLINOIS FED. AID PROJECT				

PROPOSED CURVE 336-9 DATA
P.I. STA. = 492+70.91
 $\Delta = 32^\circ 22' 09.34''$ (LT)
R = 4,250'
T = 1,233.50'
L = 2,401.04'
E = 175.38'
S.E. = 4.20%
TRANSITION IN = 478+74 TO 480+98
TRANSITION OUT = 503+77 TO 506+01
P.C. STA. = 480+37.41
P.T. STA. = 504+38.45

PLAN	DATE	BY
REVISED		
PLOTTED		
NOTED		
NO. OF WAY CHECKED		
NO. OF FILE NAME		

PROFILE	DATE	BY
REVISED		
PLOTTED		
NOTED		
NO. OF WAY CHECKED		
NO. OF FILE NAME		



ROADWAY PLAN AND PROFILE - IL. ROUTE 336 - STA. 493+00 TO STA. 505+00