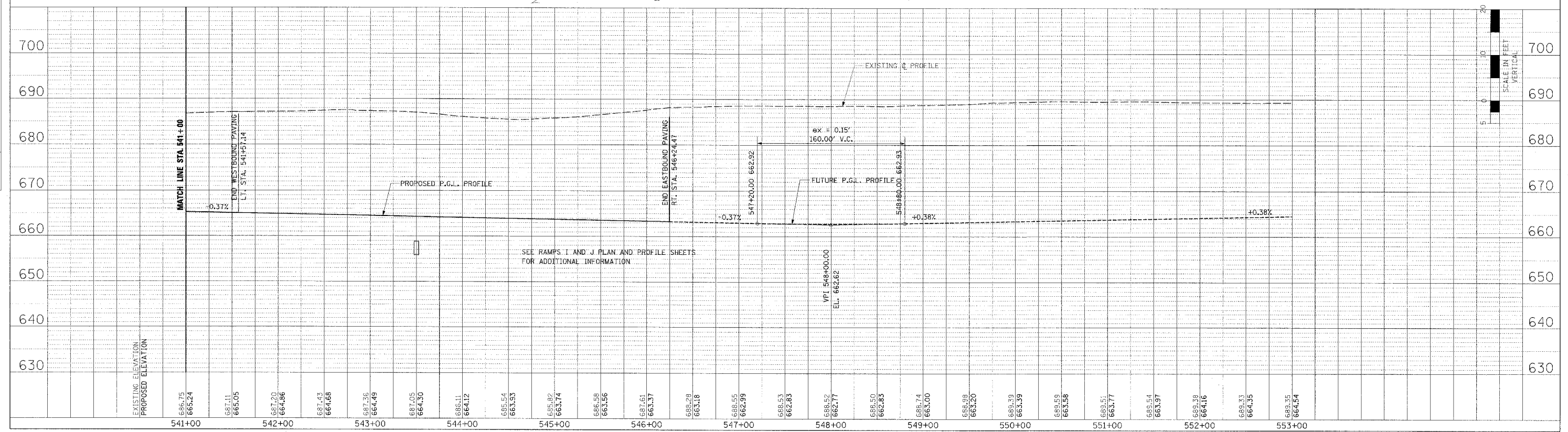
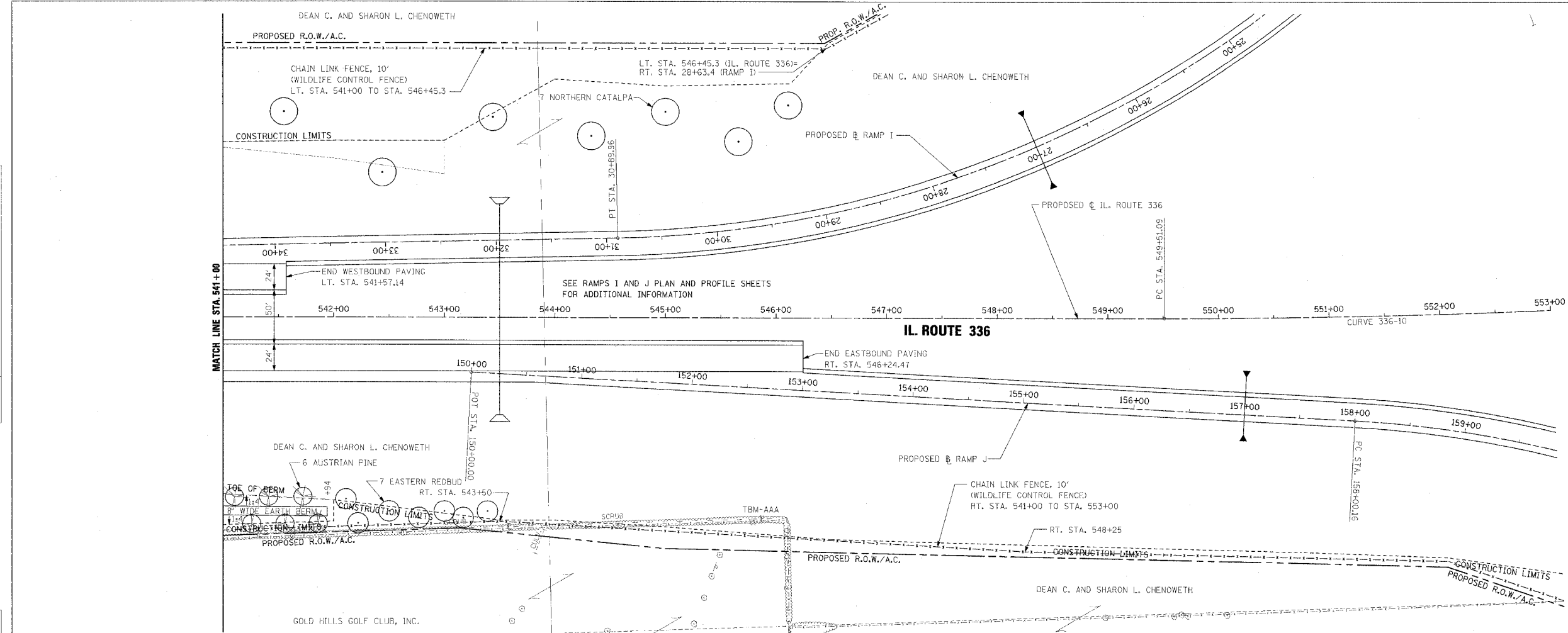


F.A.P. RTE.	SECTION	COUNTY	TOTAL SHEETS	SHEET NO.
315	55-2	MCDONOUGH	1025	162
STA. 541+00 TO STA. 553+00		FED. ROAD DIST. NO. 4 ILLINOIS FED. AID PROJECT		

PROPOSED CURVE 336-10 DATA
 P.I. STA. = 561+78.45
 $\Delta = 18^\circ 14' 28.68''$ (LT)
 $R = 7645'$
 $Y = 1,227.36'$
 $L = 2,433.94'$
 $E = 97.90'$
 $S.E. = 2.60\%$
 TRANSITION IN = 548+24 TO 549+91
 TRANSITION OUT = 573+46 TO 575+12
 P.C. STA. = 549+51.09
 P.T. STA. = 573+85.04

PLAN	DATE	BY
NO. OF SHEETS		
NO. OF SHEETS COMPLETED		
NO. OF SHEETS CHECKED		
NO. OF SHEETS APPROVED		
NO. OF SHEETS IN FIELD		
NO. OF SHEETS IN OFFICE		
NO. OF SHEETS IN STORAGE		

PROFILE	DATE	BY
NO. OF SHEETS		
NO. OF SHEETS COMPLETED		
NO. OF SHEETS CHECKED		
NO. OF SHEETS APPROVED		
NO. OF SHEETS IN FIELD		
NO. OF SHEETS IN OFFICE		
NO. OF SHEETS IN STORAGE		



ROADWAY PLAN AND PROFILE - IL. ROUTE 336 - STA. 541+00 TO STA. 553+00