

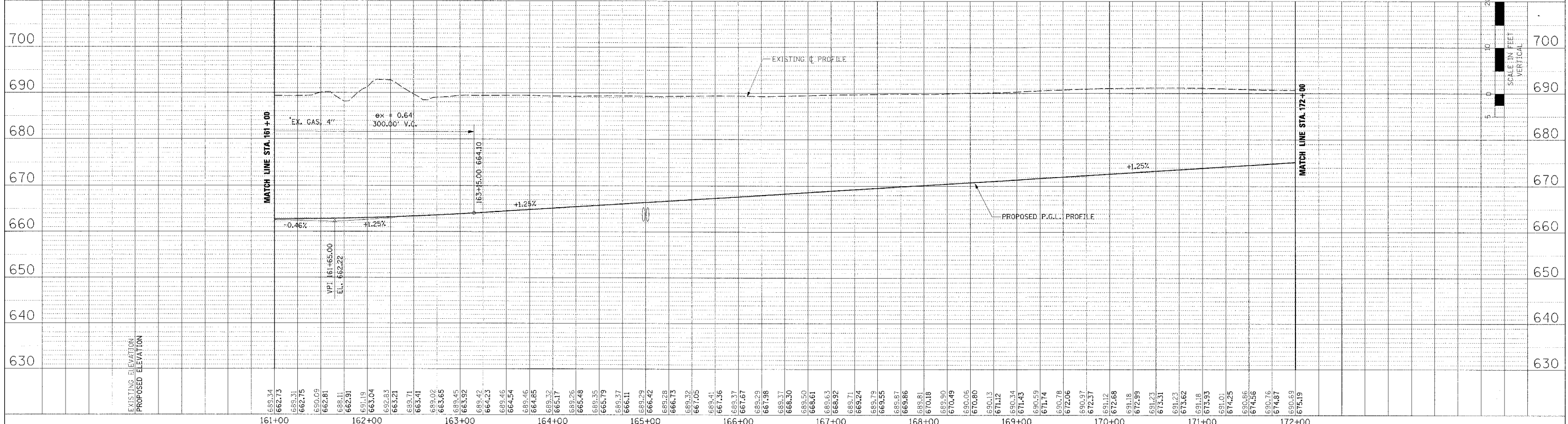
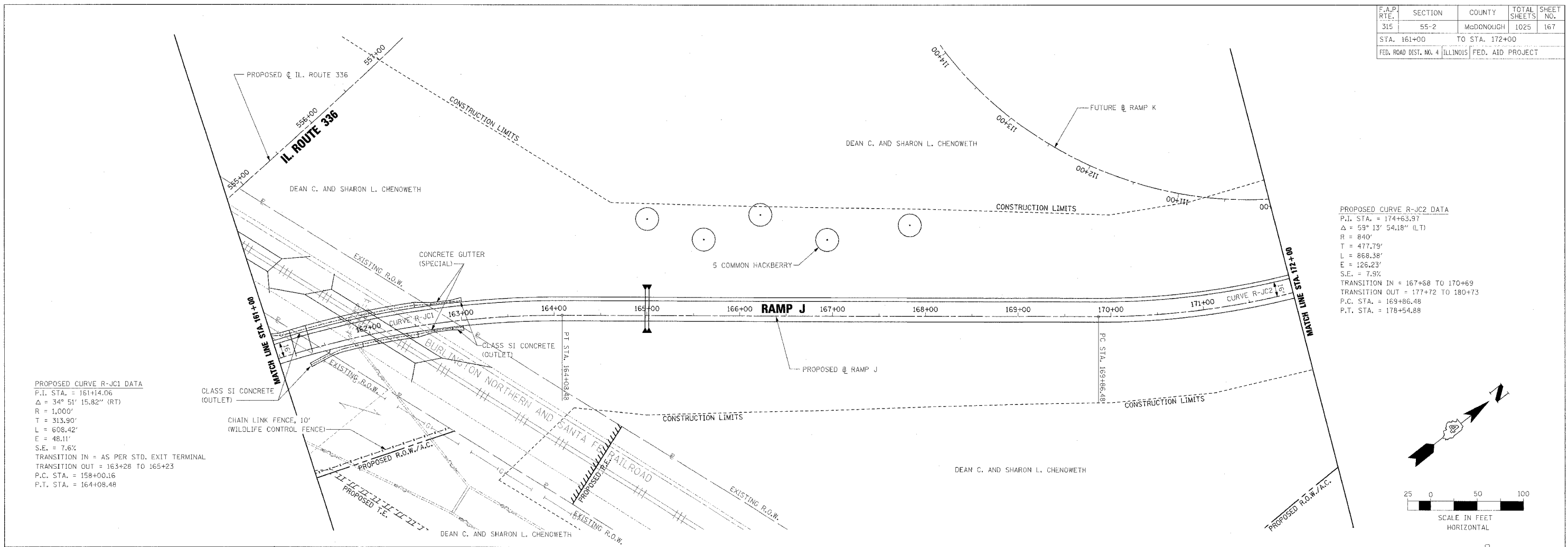
F.A.P. RTE.	SECTION	COUNTY	TOTAL SHEETS	SHEET NO.
315	55-2	McDONOUGH	1025	167
STA. 161+00		TO STA. 172+00		
FED. ROAD DIST. NO. 4		ILLINOIS		FED. AID PROJECT

PLAN	DESIGNED	BY	DATE
	PRINTED		
	CHECKED		
	BY		
	DATE		

PROFILE	DESIGNED	BY	DATE
	PRINTED		
	CHECKED		
	BY		
	DATE		

PROPOSED CURVE R-JC1 DATA
P.I. STA. = 161+14.06
 $\Delta = 34^\circ 51' 15.82''$ (RT)
R = 1,000'
T = 313.90'
L = 608.42'
E = 48.11'
S.E. = 7.6%
TRANSITION IN = AS PER STD. EXIT TERMINAL
TRANSITION OUT = 163+28 TO 165+23
P.C. STA. = 158+00.16
P.T. STA. = 164+08.48

PROPOSED CURVE R-JC2 DATA
P.I. STA. = 174+63.97
 $\Delta = 59^\circ 13' 54.18''$ (LT)
R = 840'
T = 477.79'
L = 868.38'
E = 126.23'
S.E. = 7.9%
TRANSITION IN = 167+58 TO 170+69
TRANSITION OUT = 177+72 TO 180+73
P.C. STA. = 169+86.48
P.T. STA. = 178+54.88



ROADWAY PLAN AND PROFILE - RAMP J - STA. 161+00 TO STA. 172+00