

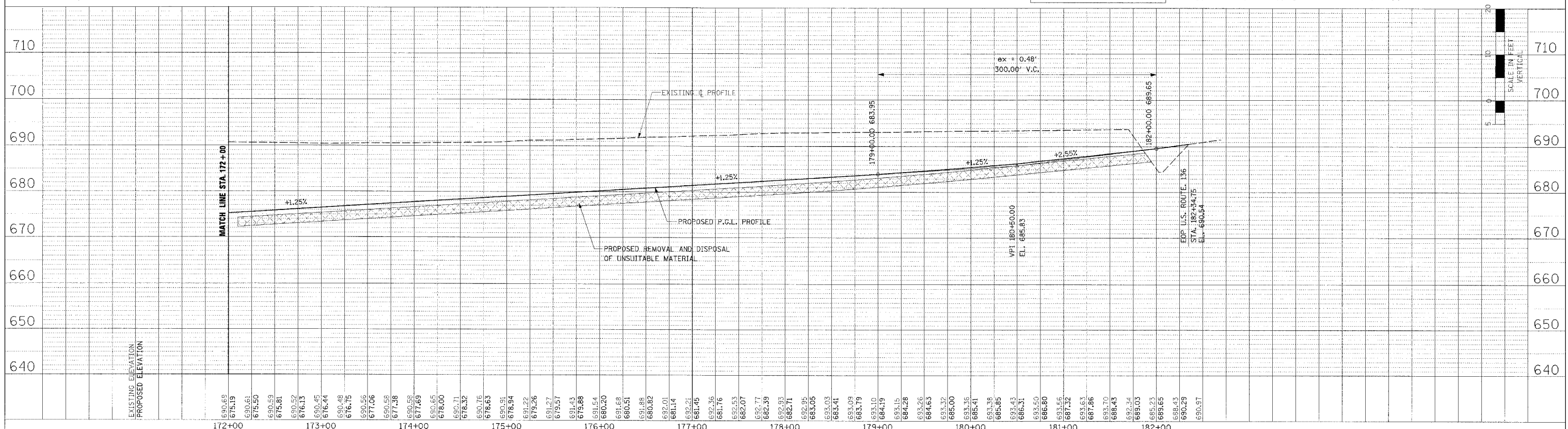
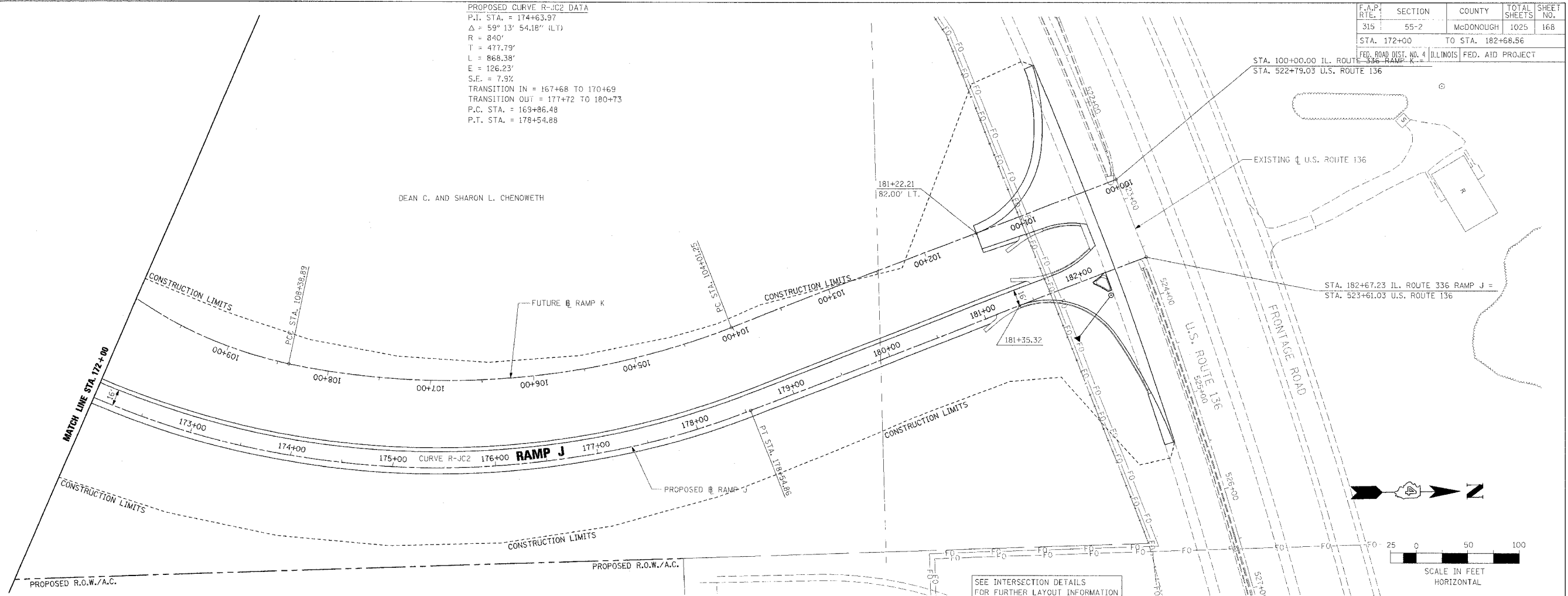
PROPOSED CURVE R-JC2 DATA  
 P.I. STA. = 174+63.97  
 $\Delta = 59^\circ 13' 54.18''$  (L1)  
 R = 840'  
 T = 477.79'  
 L = 868.38'  
 E = 126.23'  
 S.E. = 7.92%  
 TRANSITION IN = 167+68 TO 170+69  
 TRANSITION OUF = 177+72 TO 180+73  
 P.C. STA. = 169+86.48  
 P.T. STA. = 178+54.88

F.A.P. RTE.	SECTION	COUNTY	TOTAL SHEETS	SHEET NO.
315	55-2	McDONOUGH	1025	168
STA. 172+00		TO STA. 182+68.56		

FED. ROAD DIST. NO. 4 ILLINOIS FED. AID PROJECT

PLAN	DATE	BY
DESIGNED		
PLOTTED		
CHECKED		
IN CHARGE		

PROFILE	DATE	BY
DESIGNED		
PLOTTED		
CHECKED		
IN CHARGE		



ROADWAY PLAN AND PROFILE - RAMP J - STA. 172+00 TO STA. 182+66.95