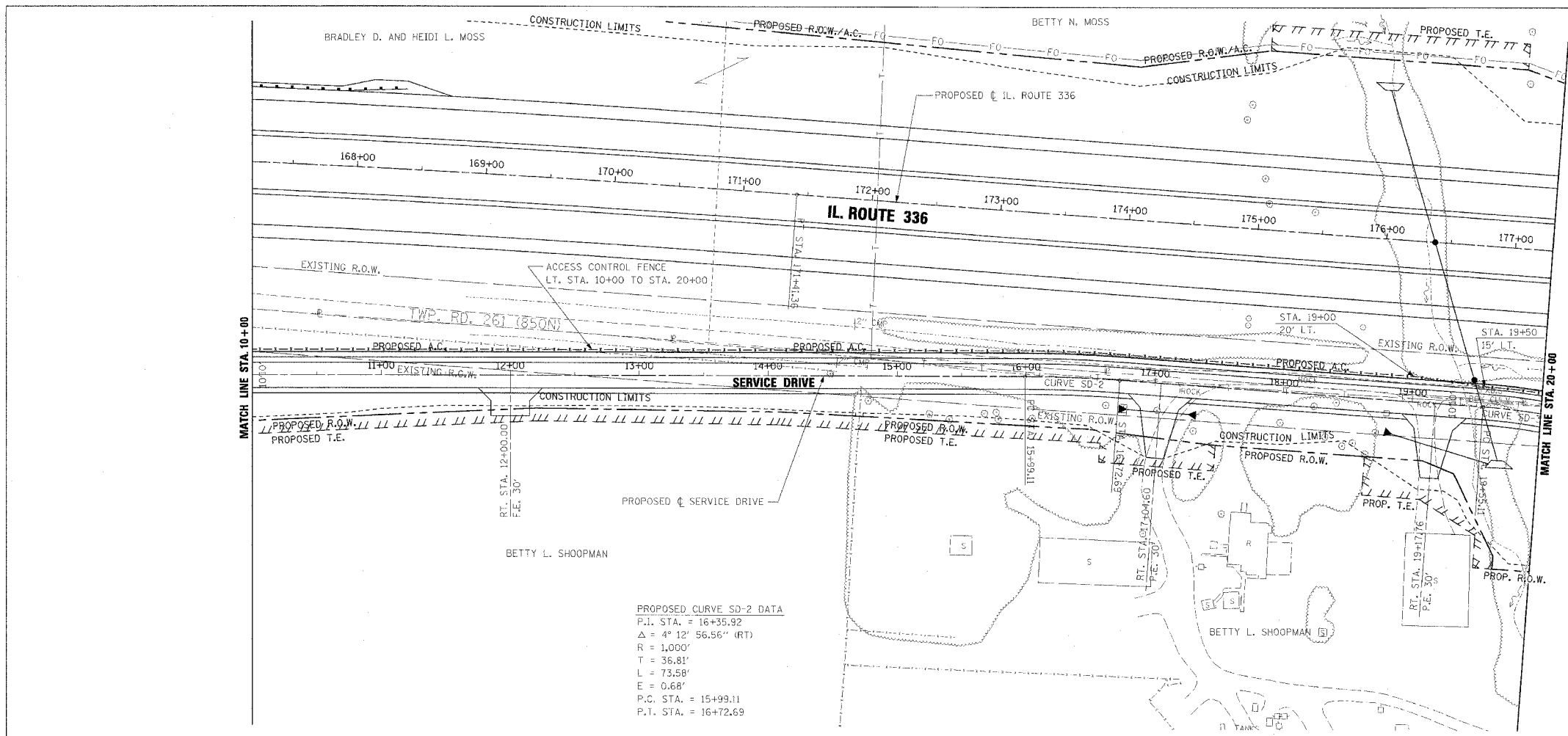


F.A.P. RTE.	SECTION	COUNTY	TOTAL SHEETS	SHEET NO.
315	55-2	McDONOUGH	1025	173
STA. 10+00		TO STA. 20+00		
FED. ROAD DIST. NO. 4 ILLINOIS FED. AID PROJECT				

NOTE:
ACCESS CONTROL FENCE TO BE PLACED 15' TO 20'
OFF OF SERVICE DRIVE AS REQUIRED TO KEEP
FENCE OUT OF DITCH R.

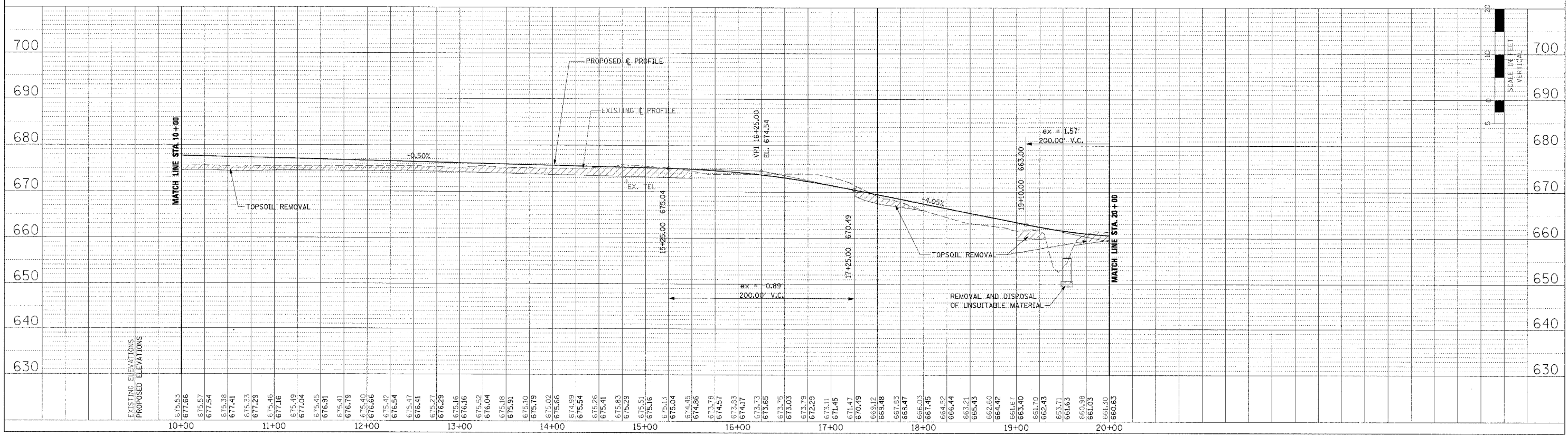
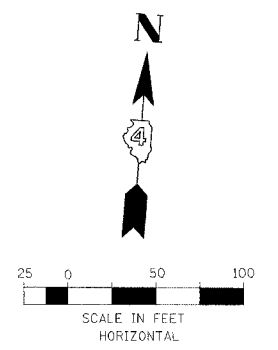
PLAN	DATE
BY	
NO. OF SHEETS	
NO. OF SHEETS	
NO. OF SHEETS	
NO. OF SHEETS	

PROFILE	DATE
BY	
NO. OF SHEETS	
NO. OF SHEETS	
NO. OF SHEETS	
NO. OF SHEETS	



PROPOSED CURVE SD-2 DATA
P.I. STA. = 16+35.92
 $\Delta = 4^\circ 12' 56.56''$ (RT)
R = 1,000'
T = 36.81'
L = 73.58'
E = 0.68'
P.C. STA. = 15+99.11
P.T. STA. = 16+72.69

PROPOSED CURVE SD-3 DATA
P.I. STA. = 21+82.06
 $\Delta = 50^\circ 36' 34.87''$ (RT)
R = 480.00'
T = 226.94'
L = 423.99'
E = 50.96'
P.C. STA. = 19+55.11
P.T. STA. = 23+79.10



ROADWAY PLAN AND PROFILE - SERVICE DRIVE - STA. 10+00 TO STA. 20+00