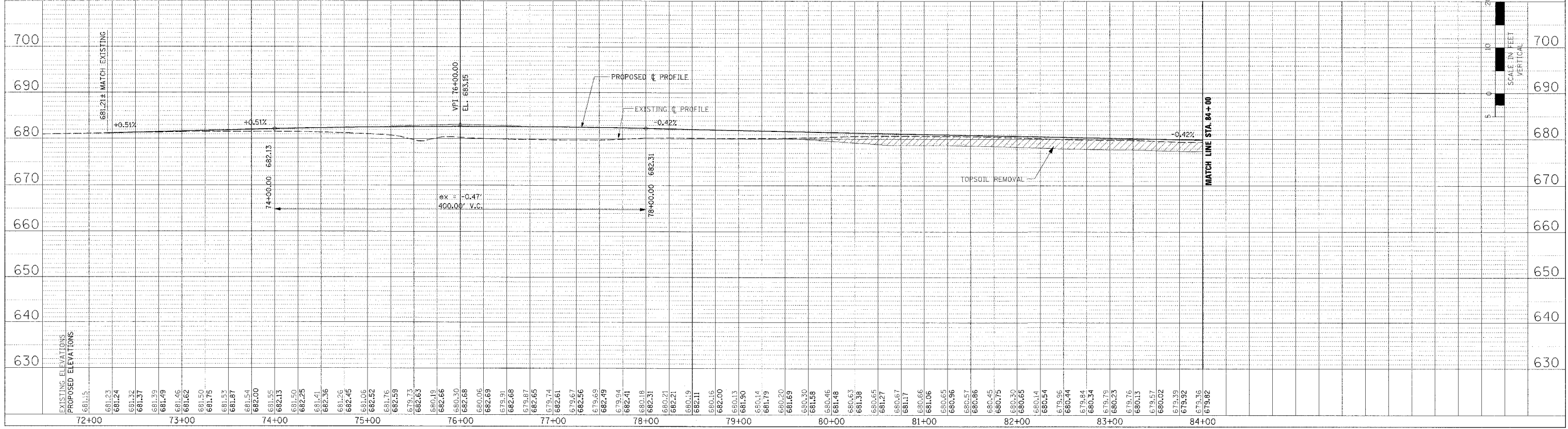
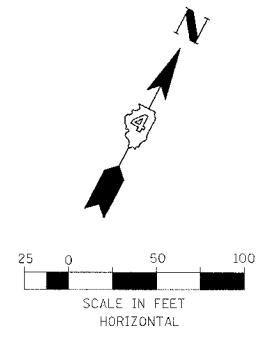
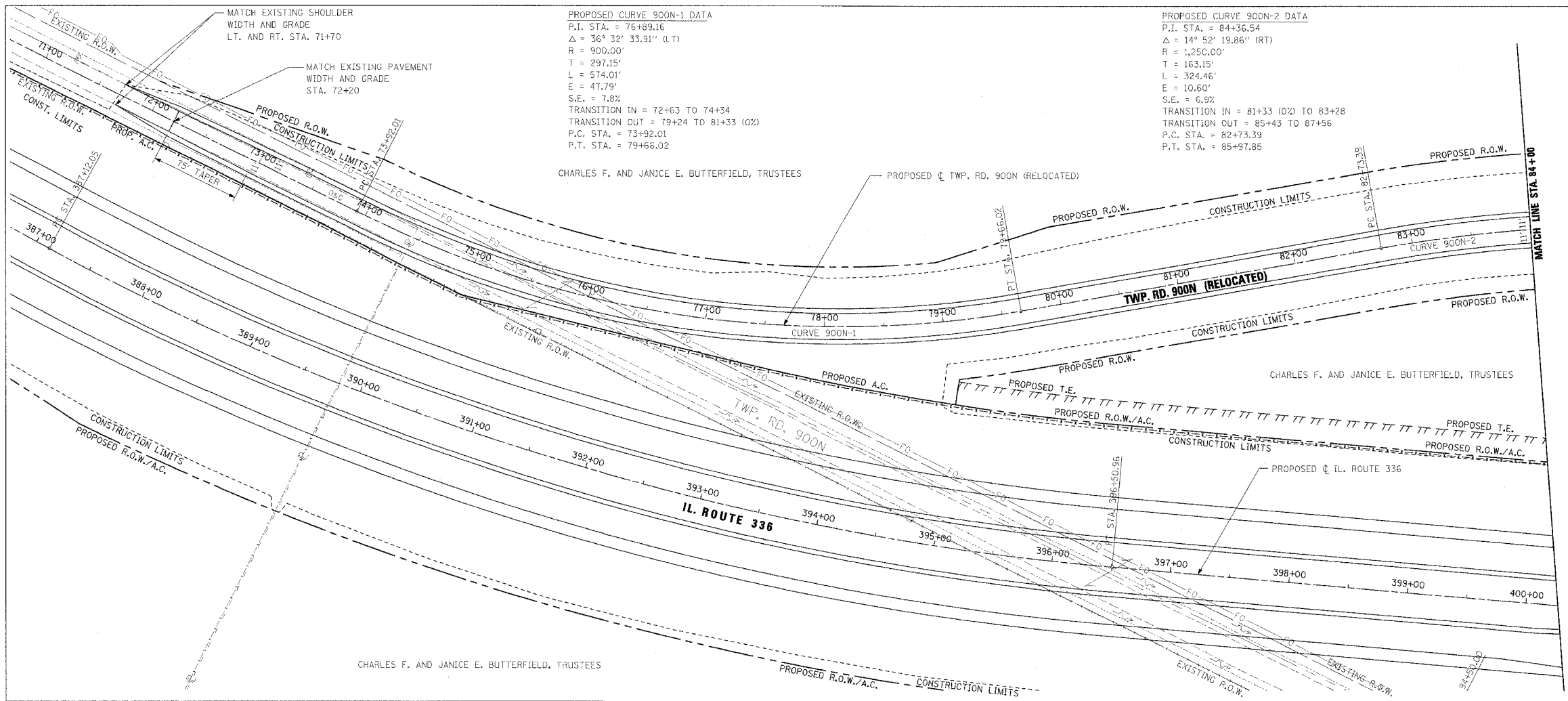


F.A.P. R.T.E.	SECTION	COUNTY	TOTAL SHEETS	SHEET NO.
315	55-2	MCDONOUGH	1025	181
STA. 71+00		TO STA. 84+00		
FED. ROAD DIST. NO. 4 ILLINOIS FED. AID PROJECT				

PROPOSED CURVE 900N-1 DATA
P.I. STA. = 76+89.16
 $\Delta = 36^\circ 32' 33.91''$ (LT)
R = 900.00'
T = 297.15'
L = 574.01'
E = 47.79'
S.E. = 7.8%
TRANSITION IN = 72+63 TO 74+34
TRANSITION OUT = 79+24 TO 81+33 (0%)
P.C. STA. = 73+92.01
P.T. STA. = 79+66.02

PROPOSED CURVE 900N-2 DATA
P.I. STA. = 84+36.54
 $\Delta = 14^\circ 52' 19.86''$ (RT)
R = 1,250.00'
T = 163.15'
L = 324.46'
E = 10.60'
S.E. = 6.9%
TRANSITION IN = 81+33 (0%) TO 83+28
TRANSITION OUT = 85+43 TO 87+56
P.C. STA. = 82+73.39
P.T. STA. = 85+97.65



ROADWAY PLAN AND PROFILE - TWP. RD. 900N (RELOCATED) - STA. 71+00 TO STA. 84+00

PLAN	DATE
BY	
NO.	

PROFILE	DATE
BY	
NO.	