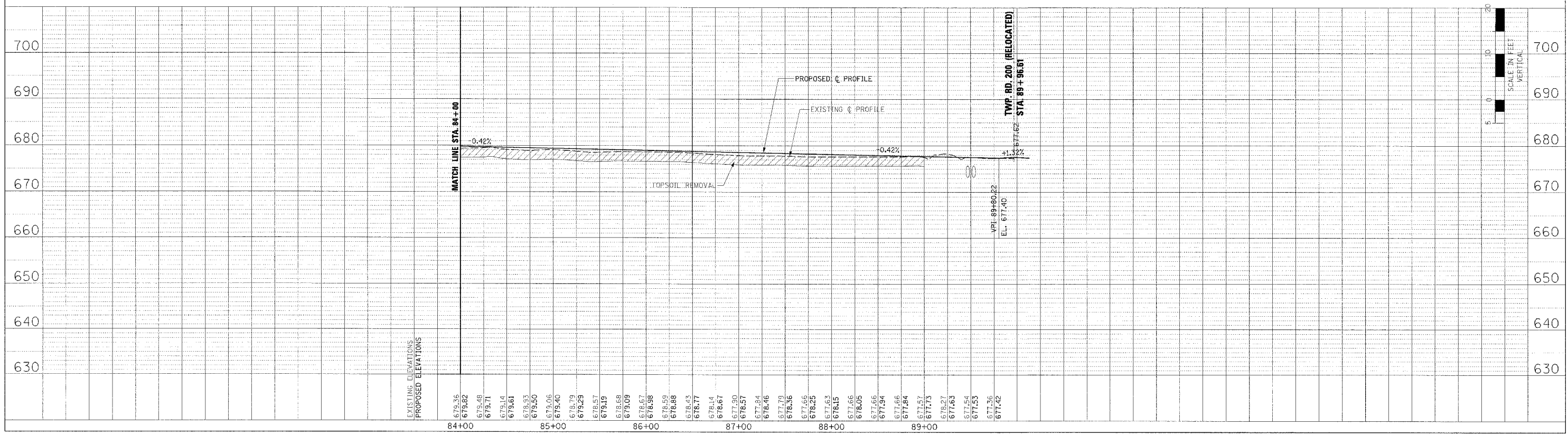
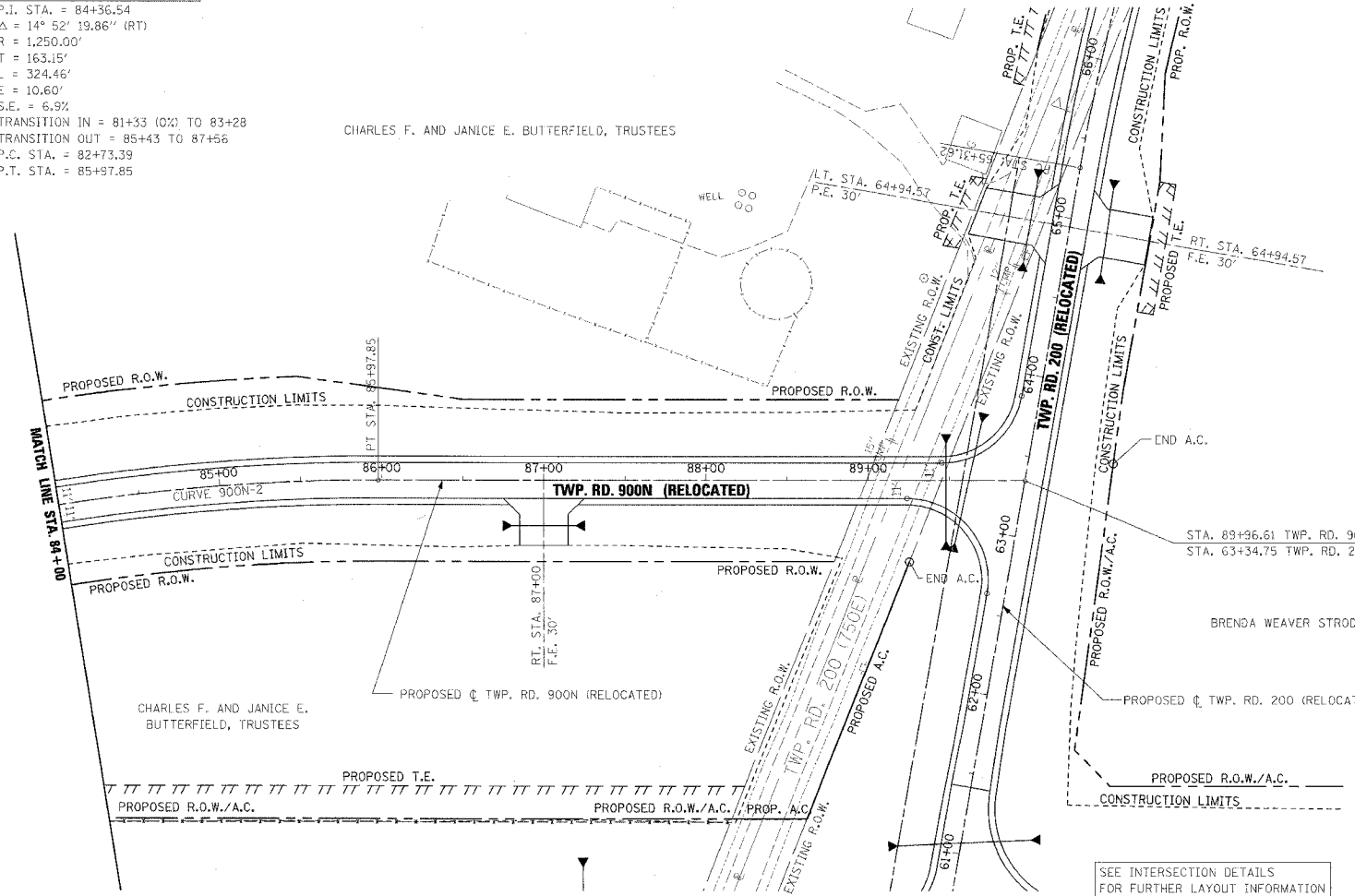


F.A.P. RTE.	SECTION	COUNTY	TOTAL SHEETS	SHEET NO.
315	55-2	McDONOUGH	1025	182
STA. 84+00		TO STA. 89+96.61		
FED. ROAD DIST. NO. 4 ILLINOIS FED. AID PROJECT				

PROPOSED CURVE 900N-2 DATA  
P.I. STA. = 84+36.54  
 $\Delta = 14^\circ 52' 19.86''$  (RT)  
R = 1,250.00'  
T = 163.15'  
L = 324.46'  
E = 10.60'  
S.E. = 6.9%  
TRANSITION IN = 81+33 (0%) TO 83+28  
TRANSITION OUT = 85+43 TO 87+56  
P.C. STA. = 82+73.39  
P.T. STA. = 85+97.85

PLAN	DATE
DESIGNED BY	BT
CHECKED BY	
DATE	

PROFILE	DATE
DESIGNED BY	BT
CHECKED BY	
DATE	



ROADWAY PLAN AND PROFILE - TWP. RD. 900N (RELOCATED) - STA. 84+00 TO STA. 89+96.61