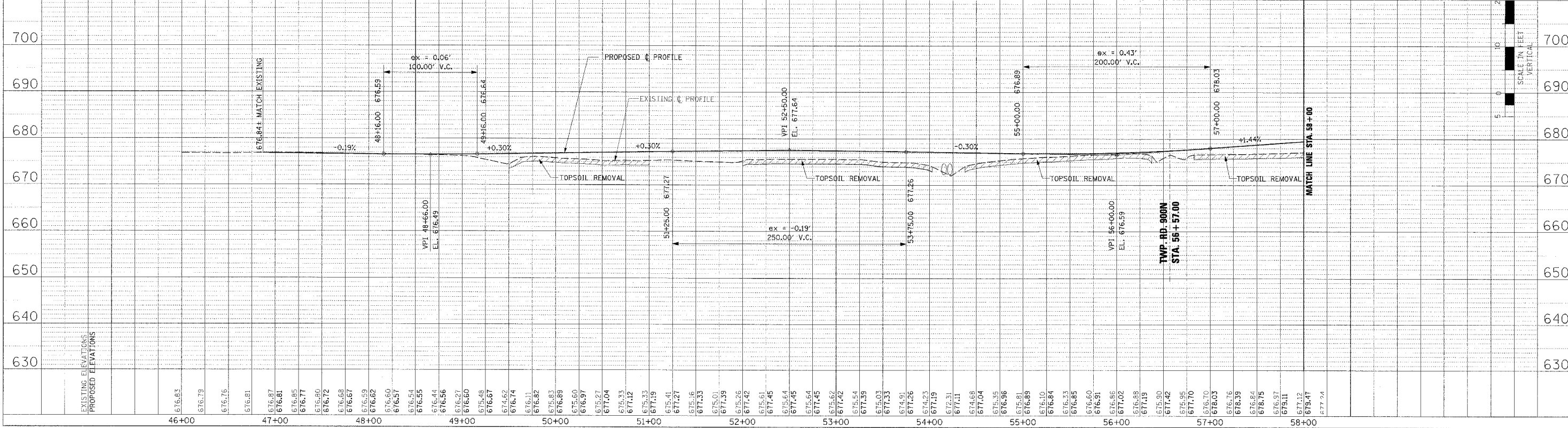
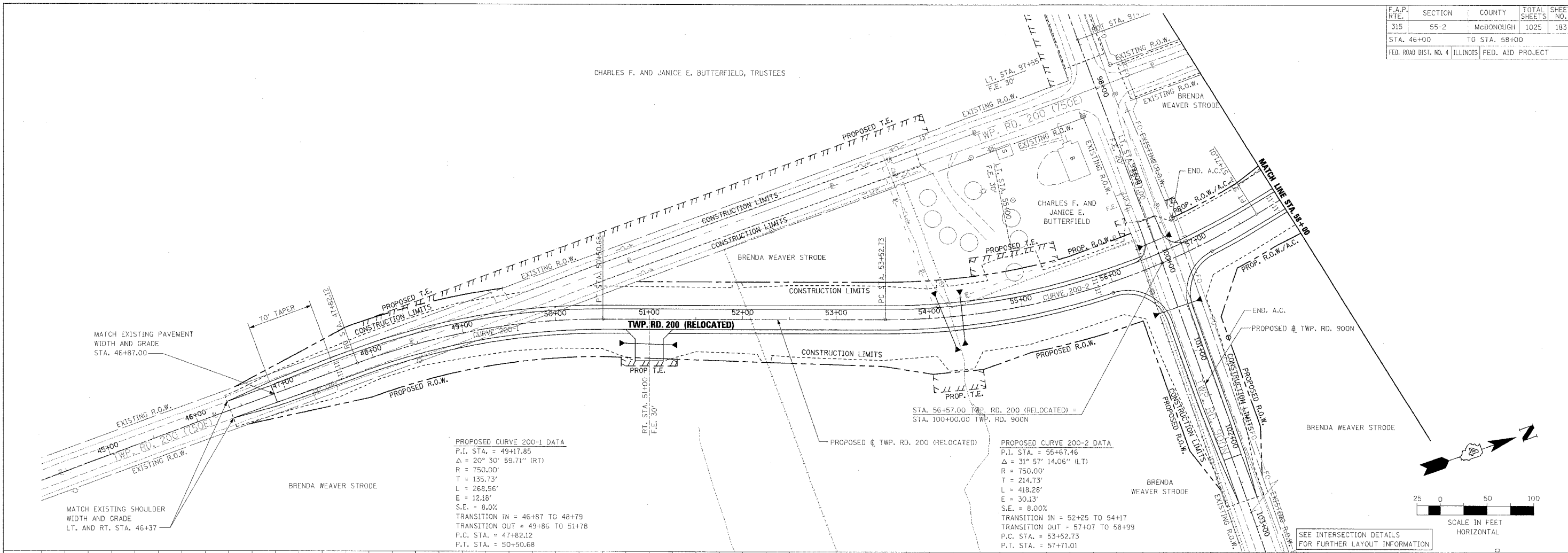


F.A.P. RTE.	SECTION	COUNTY	TOTAL SHEETS	SHEET NO.
315	55-2	McDONOUGH	1025	183
STA. 46+00		TO STA. 58+00		
FED. ROAD DIST. NO. 4		ILLINOIS FED. AID PROJECT		

CHARLES F. AND JANICE E. BUTTERFIELD, TRUSTEES

PLAN	DRAWN	DATE
NOTED	BY	
CHECKED	BY	
APPROVED	BY	

PROFILE	DRAWN	DATE
NOTED	BY	
CHECKED	BY	
APPROVED	BY	



ROADWAY PLAN AND PROFILE - TWP. RD. 200 (RELOCATED) - STA. 46+00 TO STA. 58+00