

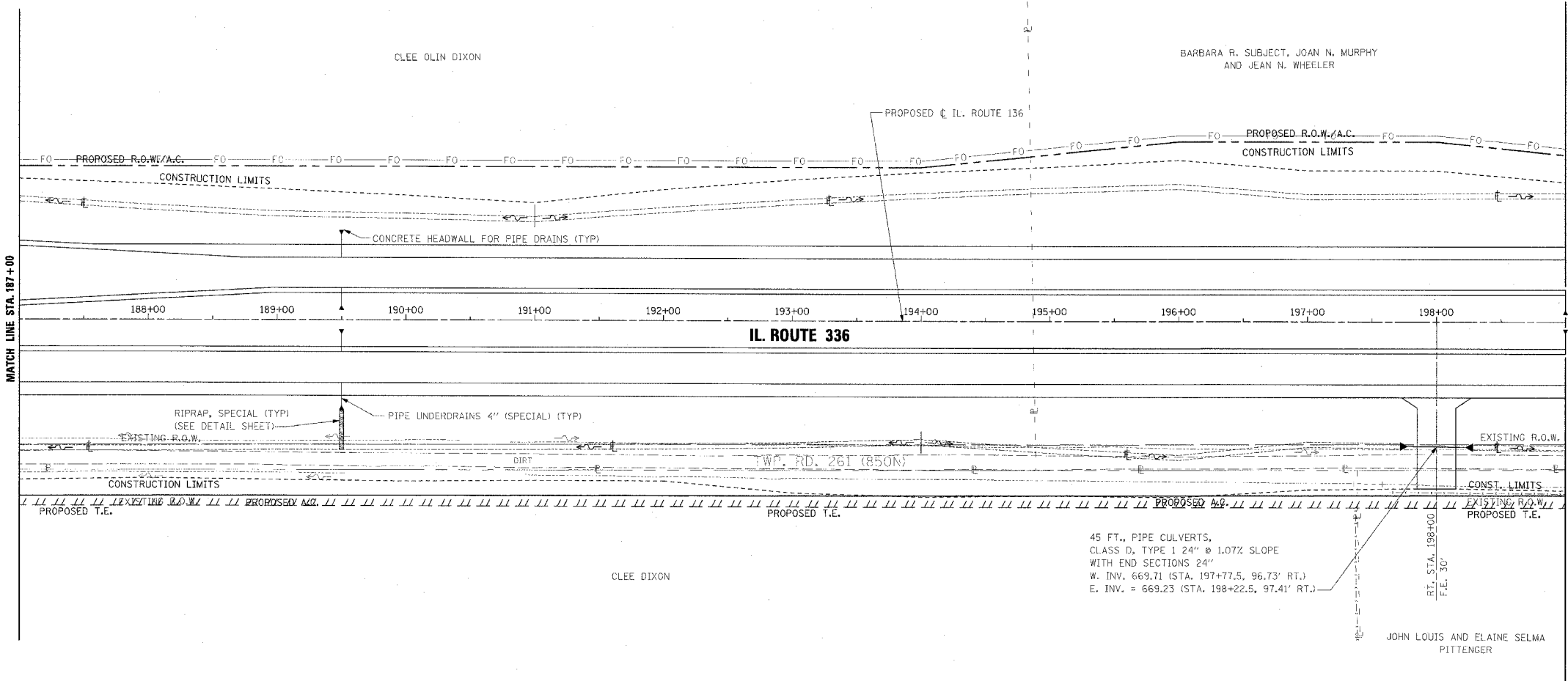
PERMANENT EROSION CONTROL LEGEND

AGGREGATE DITCH (TO BE PLACED UPON COMPLETION OF DITCH CUT)

F.A.P. RTE.	SECTION	COUNTY	TOTAL SHEETS	SHEET NO.
315	55-2	McDONOUGH	1025	195
STA. 187+00 TO STA. 199+00				
FED. ROAD DIST. NO. 4 ILLINOIS			FED. AID PROJECT	

DATE	BY

DATE	BY



PIPE UNDERDRAINS 4"

WB OUTSIDE EOP LT. STA. 187+00 TO STA. 199+00
 WB INSIDE EOP LT. STA. 187+00 TO STA. 199+00
 EB INSIDE EOP RT. STA. 187+00 TO STA. 199+00
 EB OUTSIDE EOP RT. STA. 187+00 TO STA. 199+00

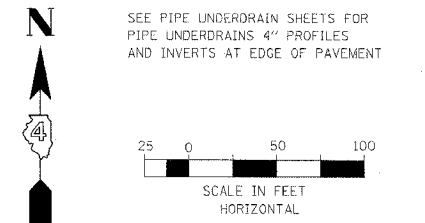
PIPE UNDERDRAINS 4" (SPECIAL)

WB OUTSIDE LT. STA. 189+50, 18' @ 1.00% SLOPE
 WB INSIDE LT. STA. 189+50, 14' @ 1.00% SLOPE
 WB INSIDE LT. STA. 199+00, 16' @ 1.00% SLOPE
 EB INSIDE RT. STA. 189+50, 14' @ 1.00% SLOPE
 EB INSIDE RT. STA. 199+00, 16' @ 1.00% SLOPE
 EB OUTSIDE RT. STA. 189+50, 18' @ 1.00% SLOPE

CONCRETE HEADWALL FOR PIPE DRAINS

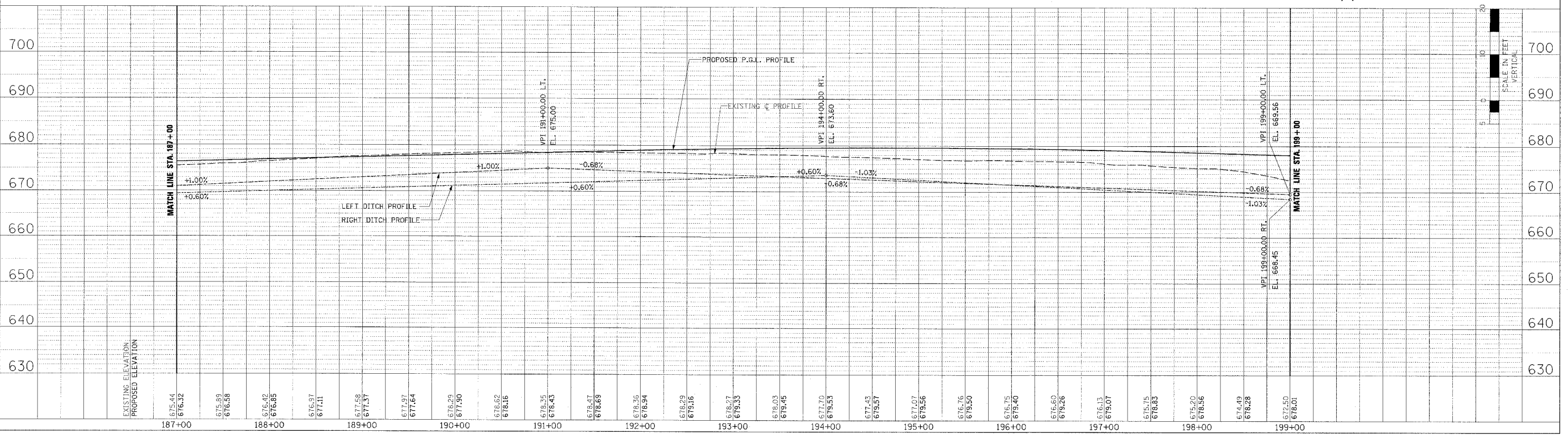
WB OUTSIDE STA. 189+50, 67' LT., INV. ELEV. = 675.39
 WB INSIDE STA. 189+50, 11' LT., INV. ELEV. = 675.43
 WB INSIDE STA. 199+00, 9' LT., INV. ELEV. = 675.61
 EB INSIDE STA. 189+50, 11' RT., INV. ELEV. = 675.43
 EB INSIDE STA. 199+00, 9' RT., INV. ELEV. = 675.61
 EB OUTSIDE STA. 189+50, 67' RT., INV. ELEV. = 675.39

45 FT., PIPE CULVERTS,
 CLASS D, TYPE 1 24" @ 1.07% SLOPE
 WITH END SECTIONS 24"
 W. INV. 669.71 (STA. 197+77.5, 96.73' RT.)
 E. INV. = 669.23 (STA. 198+22.5, 97.41' RT.)



DATE	BY

DATE	BY



DRAINAGE PLAN AND PROFILE - IL. ROUTE 336 - STA. 187+00 TO STA. 199+00