

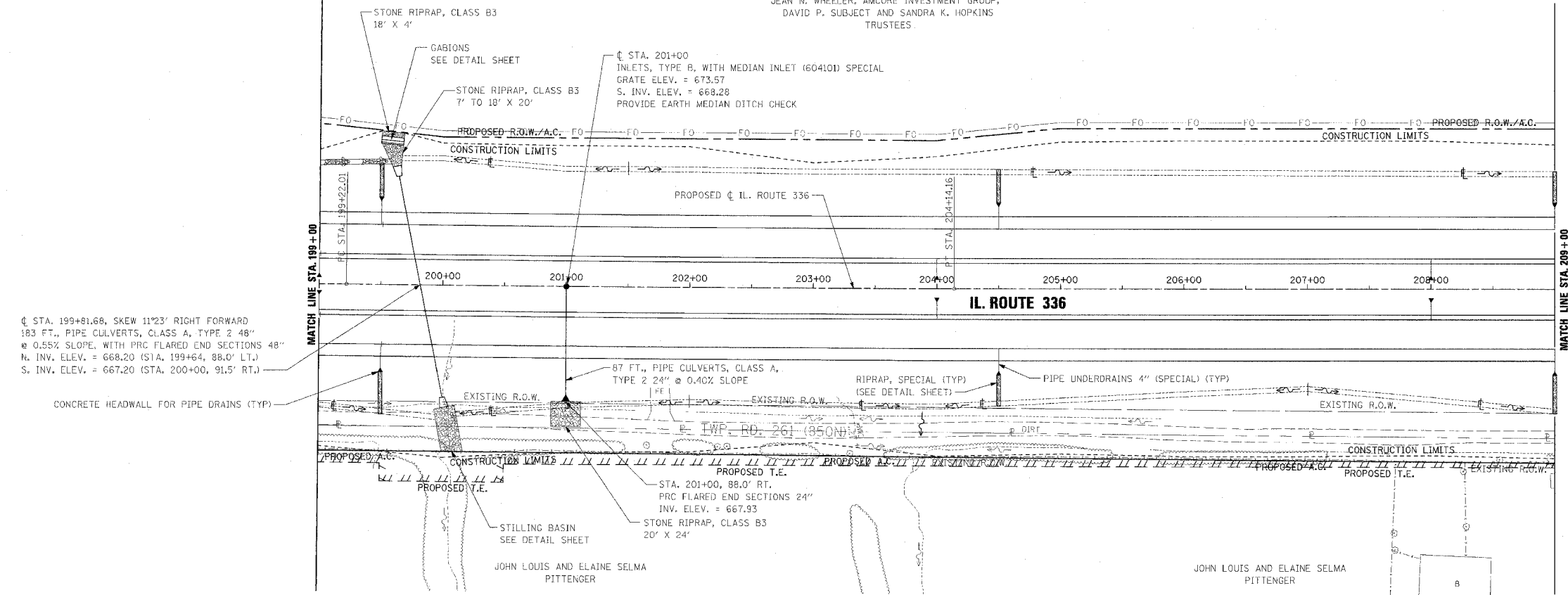
PERMANENT EROSION CONTROL LEGEND
 AGGREGATE DITCH (TO BE PLACED UPON COMPLETION OF DITCH CUT)

| F.A.P. RTE. | SECTION | COUNTY | TOTAL SHEETS | SHEET NO. |
|---|---------|-----------|--------------|-----------|
| 315 | 55-2 | McDONOUGH | 1025 | 196 |
| STA. 199+00 TO STA. 209+00 | | | | |
| FED. ROAD DIST. NO. 4 ILLINOIS FED. AID PROJECT | | | | |

| | |
|---------------|--|
| DATE | |
| BY | |
| PROJECT | |
| NO. CHECKED | |
| NO. BOOK | |
| NO. FILE NAME | |
| NO. | |

| | |
|---------------|--|
| DATE | |
| BY | |
| PROJECT | |
| NO. CHECKED | |
| NO. BOOK | |
| NO. FILE NAME | |
| NO. | |

JEAN N. WHEELER, AMCORE INVESTMENT GROUP,
 DAVID P. SUBJECT AND SANDRA K. HOPKINS
 TRUSTEES.



PIPE UNDERDRAINS 4"

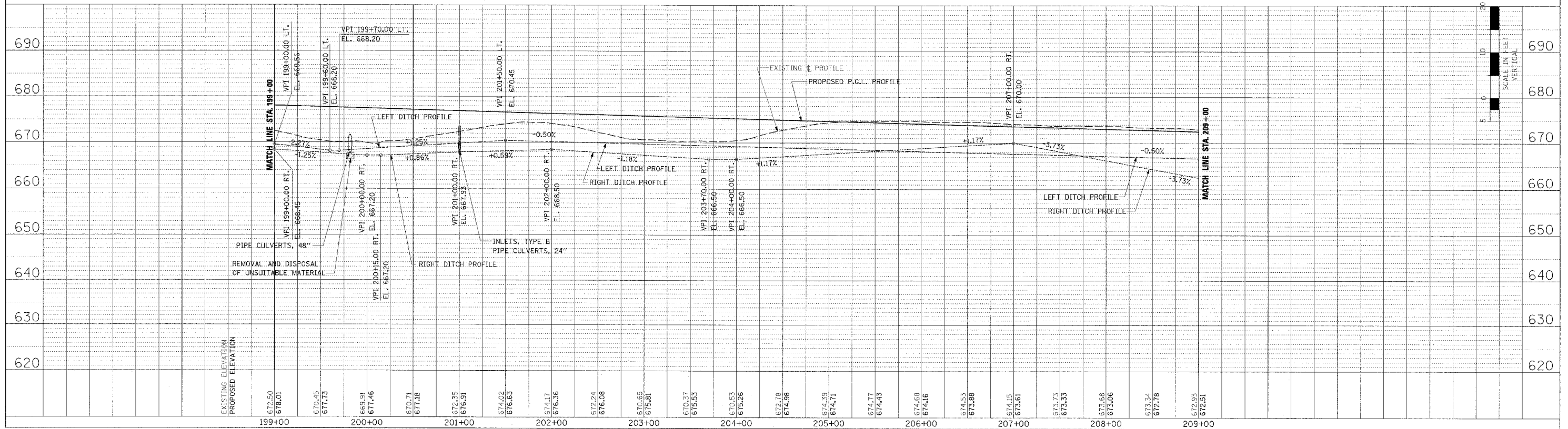
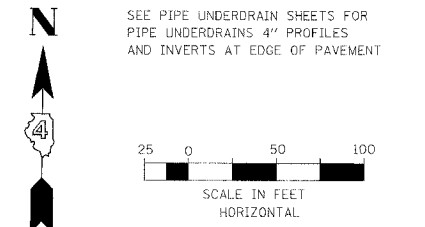
WB OUTSIDE EOP LT. STA. 199+00 TO STA. 199+50
 WB OUTSIDE EOP LT. STA. 199+50 TO STA. 209+00
 WB INSIDE EOP LT. STA. 199+00 TO STA. 209+00
 EB INSIDE EOP RT. STA. 199+00 TO STA. 209+00
 EB OUTSIDE EOP RT. STA. 199+00 TO STA. 199+50
 EB OUTSIDE EOP RT. STA. 199+50 TO STA. 209+00

PIPE UNDERDRAINS 4" (SPECIAL)

WB OUTSIDE LT. STA. 199+50, 19' @ 1.00% SLOPE
 WB OUTSIDE LT. STA. 204+50, 18' @ 1.00% SLOPE
 WB OUTSIDE LT. STA. 209+00, 18' @ 0.83% SLOPE
 WB INSIDE LT. STA. 204+00, 14' @ 1.00% SLOPE
 WB INSIDE LT. STA. 208+00, 14' @ 1.00% SLOPE
 EB INSIDE RT. STA. 204+00, 14' @ 1.00% SLOPE
 EB INSIDE RT. STA. 208+00, 14' @ 1.00% SLOPE
 EB OUTSIDE RT. STA. 199+50, 19' @ 1.00% SLOPE
 EB OUTSIDE RT. STA. 204+50, 18' @ 1.00% SLOPE
 EB OUTSIDE RT. STA. 209+00, 18' @ 1.00% SLOPE

CONCRETE HEADWALL FOR PIPE DRAINS

WB OUTSIDE STA. 199+50, 68' LT., INV. ELEV. = 675.38
 WB OUTSIDE STA. 204+50, 67' LT., INV. ELEV. = 672.80
 WB OUTSIDE STA. 209+00, 67' LT., INV. ELEV. = 670.36
 WB INSIDE STA. 204+00, 11' LT., INV. ELEV. = 673.12
 WB INSIDE STA. 208+00, 11' LT., INV. ELEV. = 670.92
 EB INSIDE STA. 204+00, 11' RT., INV. ELEV. = 673.12
 EB INSIDE STA. 208+00, 11' RT., INV. ELEV. = 670.92
 EB OUTSIDE STA. 199+50, 68' RT., INV. ELEV. = 675.38
 EB OUTSIDE STA. 204+50, 67' RT., INV. ELEV. = 672.80
 EB OUTSIDE STA. 209+00, 67' RT., INV. ELEV. = 670.33



DRAINAGE PLAN AND PROFILE - IL. ROUTE 336 - STA. 199+00 TO STA. 209+00