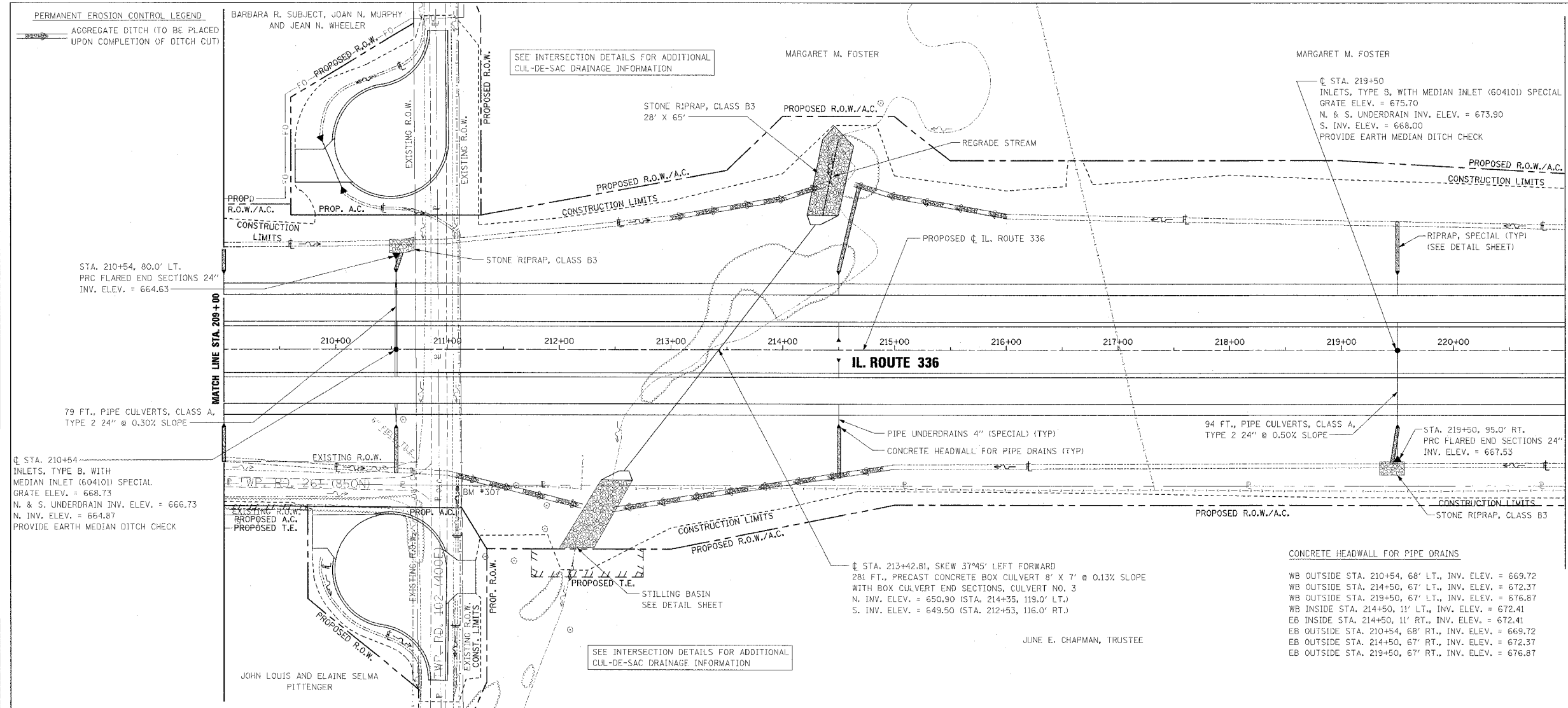


F.A.P. RTE.	SECTION	COUNTY	TOTAL SHEETS	SHEET NO.
315	55-2	McDONOUGH	1025	197
STA. 209+00		TO STA. 221+00		
FED. ROAD DIST. NO. 4 ILLINOIS FED. AID PROJECT				



PIPE UNDERDRAINS 4"

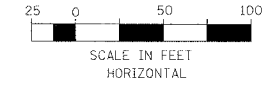
WB OUTSIDE EOP LT. STA. 209+00 TO STA. 210+54
 WB OUTSIDE EOP LT. STA. 210+54 TO STA. 221+00
 WB INSIDE EOP LT. STA. 209+00 TO STA. 210+54
 WB INSIDE EOP LT. STA. 210+54 TO STA. 221+00
 EB INSIDE EOP RT. STA. 209+00 TO STA. 210+54
 EB INSIDE EOP RT. STA. 210+54 TO STA. 221+00
 EB OUTSIDE EOP RT. STA. 209+00 TO STA. 210+54
 EB OUTSIDE EOP RT. STA. 210+54 TO STA. 221+00

PIPE UNDERDRAINS 4" (SPECIAL)

WB OUTSIDE LT. STA. 210+54 (W. PIPE), 19' @ 1.00% SLOPE
 WB OUTSIDE LT. STA. 210+54 (E. PIPE), 19' @ 1.50% SLOPE
 WB OUTSIDE LT. STA. 214+50, 18' @ 1.00% SLOPE
 WB OUTSIDE LT. STA. 219+50, 18' @ 1.00% SLOPE
 WB INSIDE LT. STA. 210+54 (W. PIPE), 25' @ 11.24% SLOPE
 WB INSIDE LT. STA. 210+54 (E. PIPE), 25' @ 11.76% SLOPE
 WB INSIDE LT. STA. 214+50, 14' @ 1.00% SLOPE
 WB INSIDE LT. STA. 219+50, 25' @ 12.60% SLOPE
 EB INSIDE RT. STA. 210+54 (W. PIPE), 25' @ 8.71% SLOPE
 EB INSIDE RT. STA. 210+54 (E. PIPE), 25' @ 8.50% SLOPE
 EB INSIDE RT. STA. 214+50, 14' @ 1.00% SLOPE
 EB INSIDE RT. STA. 219+50, 14' @ 1.00% SLOPE
 EB OUTSIDE RT. STA. 210+54 (W. PIPE), 19' @ 1.00% SLOPE
 EB OUTSIDE RT. STA. 210+54 (E. PIPE), 19' @ 1.50% SLOPE
 EB OUTSIDE RT. STA. 214+50, 18' @ 1.00% SLOPE
 EB OUTSIDE RT. STA. 219+50, 18' @ 1.00% SLOPE

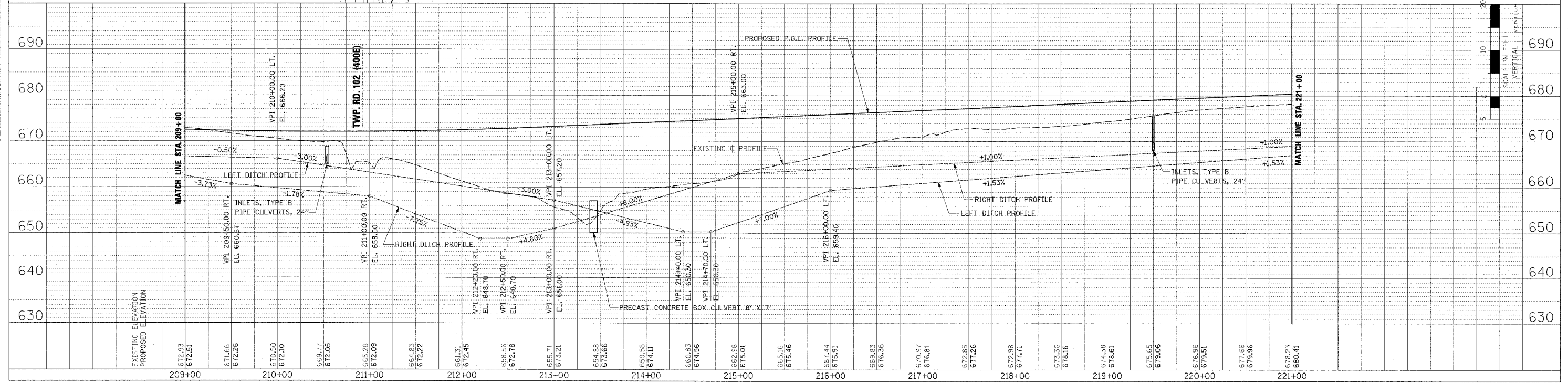
CONCRETE HEADWALL FOR PIPE DRAINS

WB OUTSIDE STA. 210+54, 68' LT., INV. ELEV. = 669.72
 WB OUTSIDE STA. 214+50, 67' LT., INV. ELEV. = 672.37
 WB OUTSIDE STA. 219+50, 67' LT., INV. ELEV. = 676.87
 WB INSIDE STA. 214+50, 11' LT., INV. ELEV. = 672.41
 EB INSIDE STA. 214+50, 11' RT., INV. ELEV. = 672.41
 EB OUTSIDE STA. 210+54, 68' RT., INV. ELEV. = 669.72
 EB OUTSIDE STA. 214+50, 67' RT., INV. ELEV. = 672.37
 EB OUTSIDE STA. 219+50, 67' RT., INV. ELEV. = 676.87



DATE	BY	REVISION

DATE	BY	REVISION



DRAINAGE PLAN AND PROFILE - IL. ROUTE 336 - STA. 209+00 TO STA. 221+00