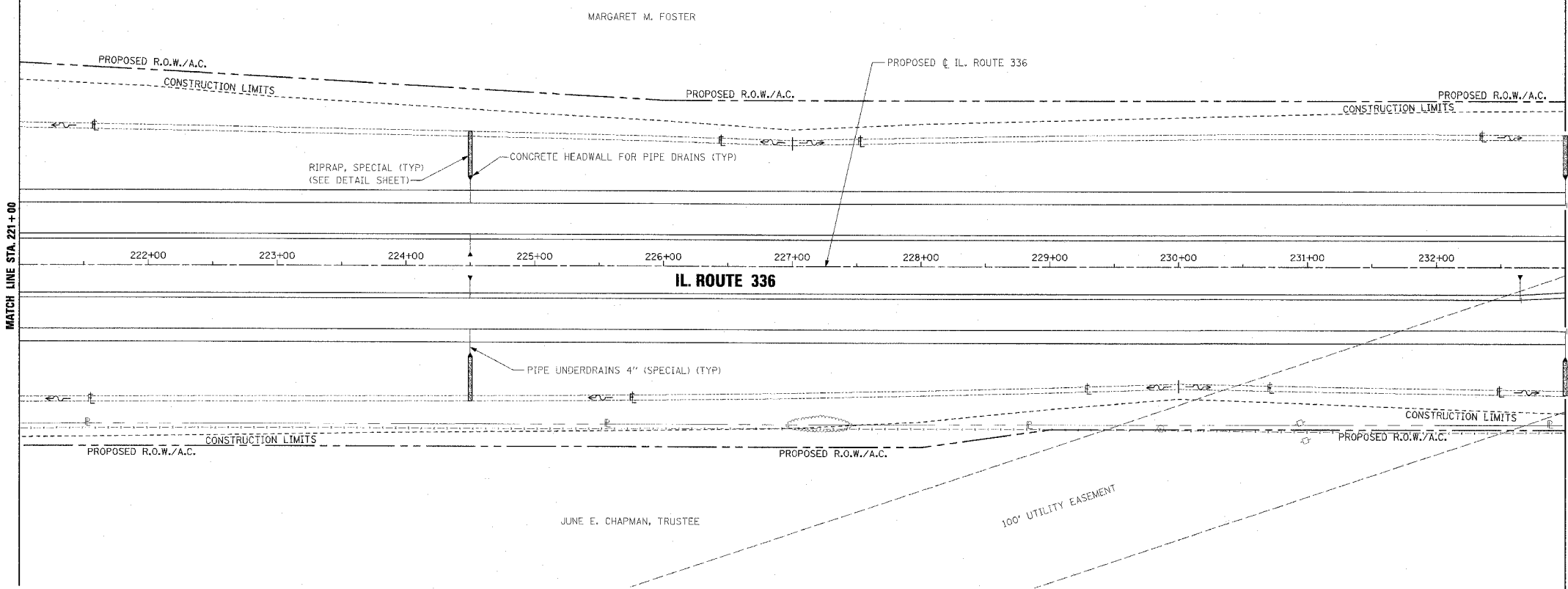


F.A.P. RTE.	SECTION	COUNTY	TOTAL SHEETS	SHEET NO.
315	55-2	McDONOUGH	1025	198
STA. 221+00		TO STA. 233+00		
FED. ROAD DIST. NO. 4		ILLINOIS	FED. AID PROJECT	

PERMANENT EROSION CONTROL LEGEND  
 AGGREGATE DITCH (TO BE PLACED UPON COMPLETION OF DITCH CUT)



PIPE UNDERDRAINS 4"

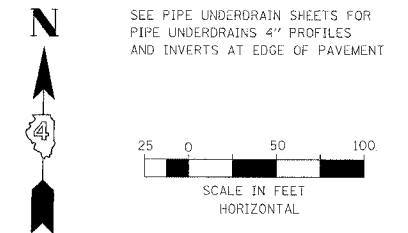
WB OUTSIDE EOP LT. STA. 221+00 TO STA. 233+00  
 WB INSIDE EOP LT. STA. 221+00 TO STA. 233+00  
 EB INSIDE EOP RT. STA. 221+00 TO STA. 232+65  
 EB INSIDE EOP RT. STA. 232+65 TO STA. 233+00  
 EB OUTSIDE EOP RT. STA. 221+00 TO STA. 233+00

PIPE UNDERDRAINS 4" (SPECIAL)

WB OUTSIDE LT. STA. 224+50, 18' @ 1.00% SLOPE  
 WB OUTSIDE LT. STA. 233+00, 20' @ 1.00% SLOPE  
 WB INSIDE LT. STA. 224+50, 14' @ 1.00% SLOPE  
 EB INSIDE RT. STA. 224+50, 14' @ 1.00% SLOPE  
 EB INSIDE RT. STA. 232+65, 16' @ 1.00% SLOPE  
 EB OUTSIDE RT. STA. 224+50, 18' @ 1.00% SLOPE  
 EB OUTSIDE RT. STA. 233+00, 20' @ 1.00% SLOPE

CONCRETE HEADWALL FOR PIPE DRAINS

WB OUTSIDE STA. 224+50, 67' LT., INV. ELEV. = 681.37  
 WB OUTSIDE STA. 233+00, 69' LT., INV. ELEV. = 681.82  
 WB INSIDE STA. 224+50, 11' RT., INV. ELEV. = 681.41  
 EB INSIDE STA. 224+50, 11' RT., INV. ELEV. = 681.41  
 EB INSIDE STA. 232+65, 9' RT., INV. ELEV. = 682.00  
 EB OUTSIDE STA. 224+50, 67' RT., INV. ELEV. = 681.31  
 EB OUTSIDE STA. 233+00, 70' RT., INV. ELEV. = 681.82



DATE	BY

PLAN

REVISIONS

NO. DATE

NOTE BOOK

NO.

DATE	BY

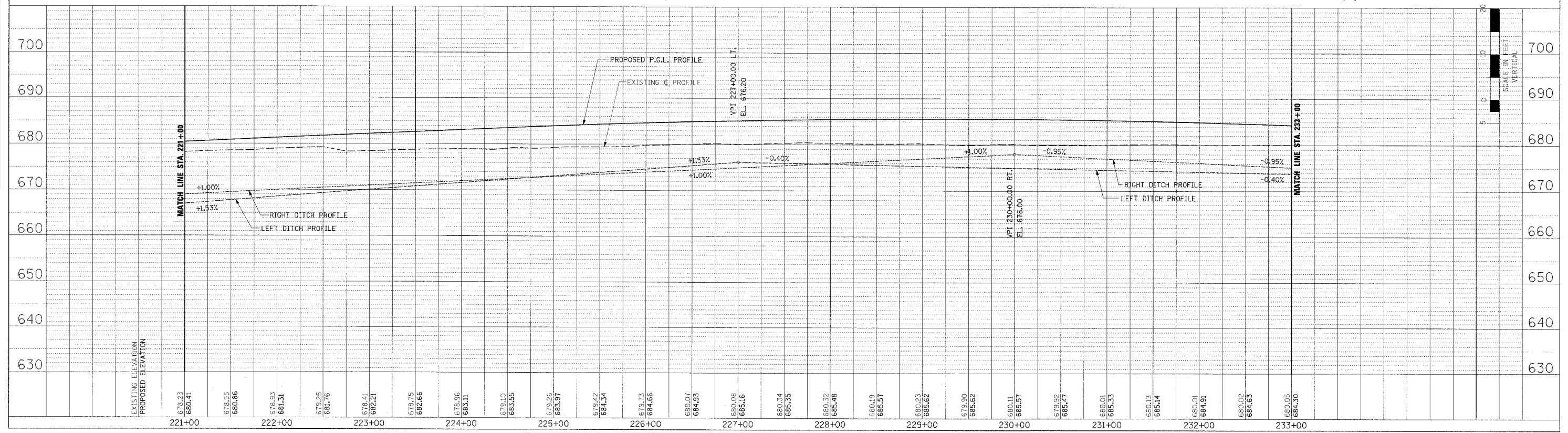
PROFILE

REVISIONS

NO. DATE

NOTE BOOK

NO.



DRAINAGE PLAN AND PROFILE - IL. ROUTE 336 - STA. 221+00 TO STA. 233+00