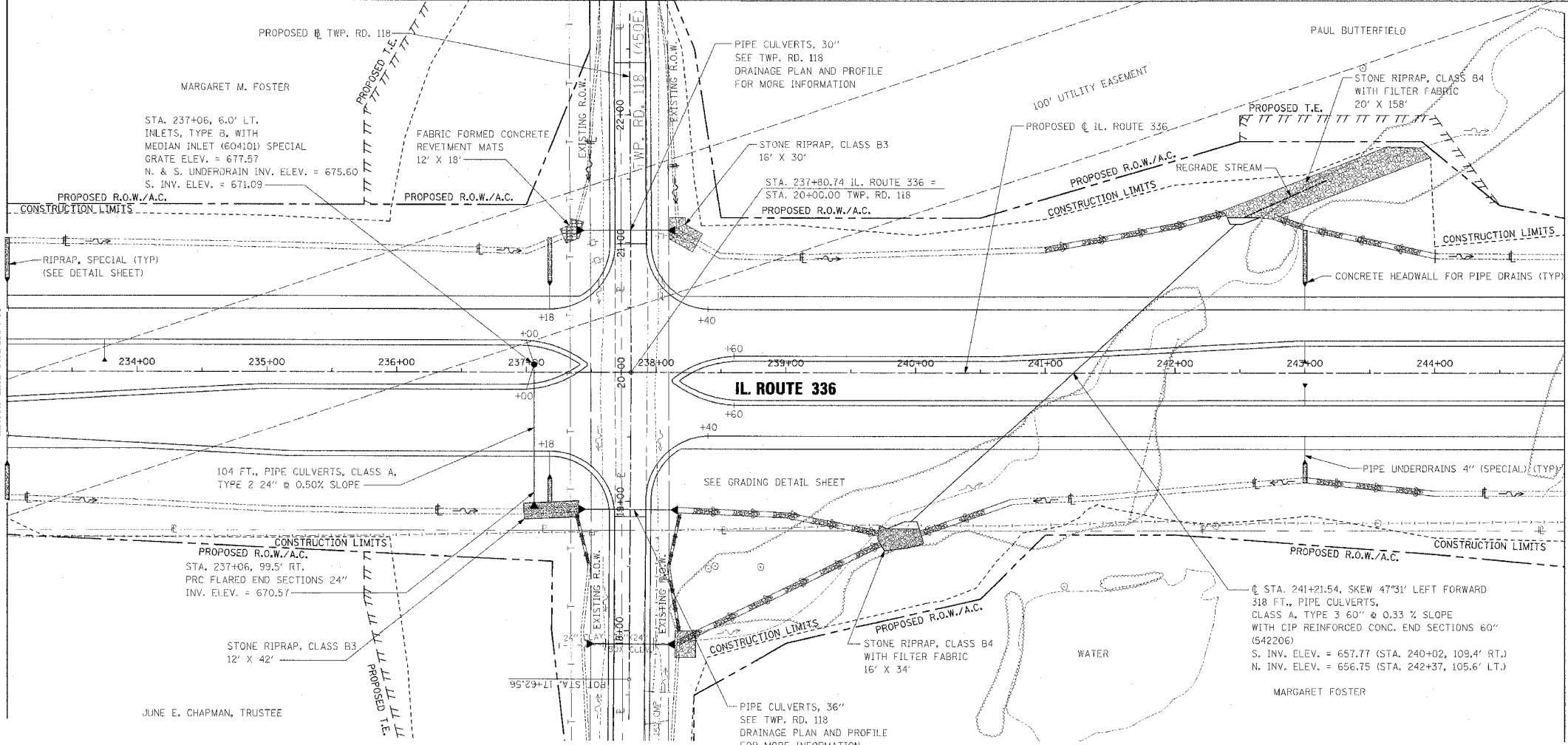


F.A.P. RTE.	SECTION	COUNTY	TOTAL SHEETS	SHEET NO.
315	55-2	MCDONOUGH	1025	199
STA. 233+00		TO STA. 245+00		
FED. ROAD DIST. NO. 4		ILLINOIS		FED. AID PROJECT

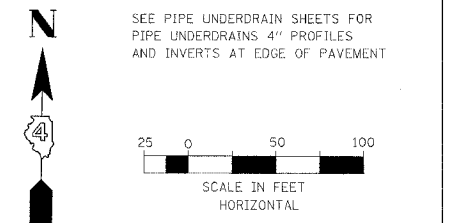
PERMANENT EROSION CONTROL LEGEND
 AGGREGATE DITCH (TO BE PLACED UPON COMPLETION OF DITCH CUT)



PIPE UNDERDRAINS 4"
 WB OUTSIDE EOP LT. STA. 233+00 TO STA. 237+18
 WB OUTSIDE EOP LT. STA. 238+40 TO STA. 245+00
 WB INSIDE EOP LT. STA. 233+00 TO STA. 237+00
 WB INSIDE EOP LT. STA. 238+60 TO STA. 245+00
 EB INSIDE EOP RT. STA. 233+00 TO STA. 237+00
 EB INSIDE EOP RT. STA. 238+60 TO STA. 245+00
 EB OUTSIDE EOP RT. STA. 233+00 TO STA. 237+18
 EB OUTSIDE EOP RT. STA. 238+40 TO STA. 245+00

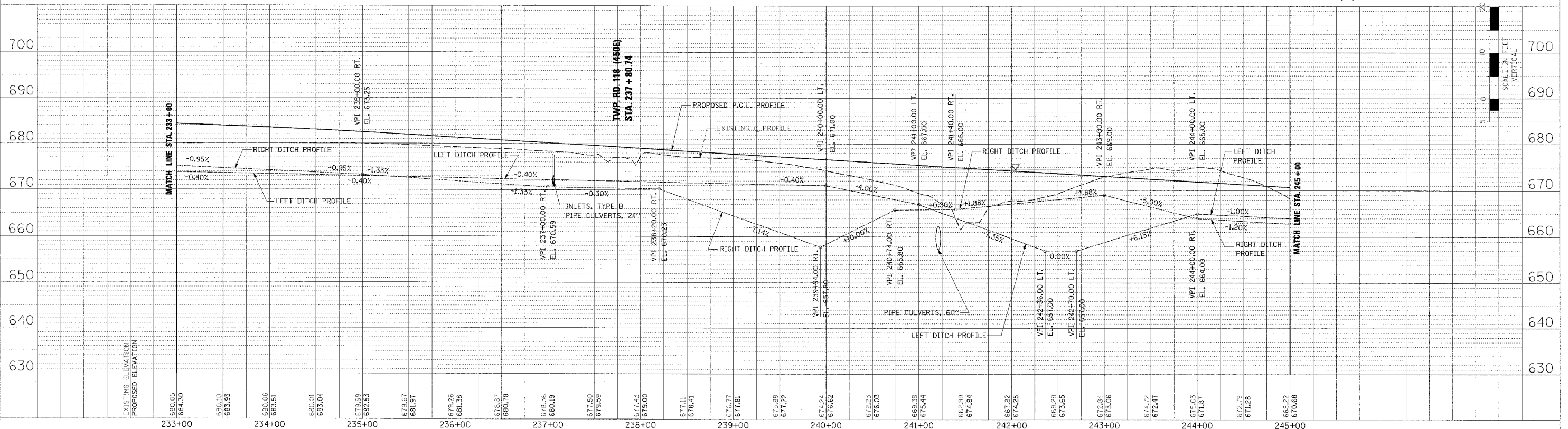
PIPE UNDERDRAINS 4" (SPECIAL)
 WB OUTSIDE LT. STA. 237+18, 18' @ 1.00% SLOPE
 WB OUTSIDE LT. STA. 243+00, 67' @ 1.00% SLOPE
 WB INSIDE LT. STA. 233+75, 14' @ 1.00% SLOPE
 WB INSIDE LT. STA. 237+00, 20' @ 1.00% SLOPE
 WB INSIDE LT. STA. 243+00, 14' @ 1.00% SLOPE
 EB INSIDE LT. STA. 237+00, 22' @ 1.00% SLOPE
 EB INSIDE RT. STA. 243+00, 14' @ 1.00% SLOPE
 EB OUTSIDE RT. STA. 237+18, 18' @ 1.00% SLOPE
 EB OUTSIDE RT. STA. 243+00, 18' @ 1.00% SLOPE

CONCRETE HEADWALL FOR PIPE DRAINS
 WB OUTSIDE STA. 237+18, 67' LT., INV. ELEV. = 676.82
 WB OUTSIDE STA. 243+00, 67' LT., INV. ELEV. = 670.88
 WB INSIDE STA. 233+75, 11' LT., INV. ELEV. = 681.61
 WB INSIDE STA. 243+00, 11' LT., INV. ELEV. = 670.92
 EB INSIDE STA. 243+00, 11' RT., INV. ELEV. = 670.92
 EB OUTSIDE STA. 237+18, 79' RT., INV. ELEV. = 677.43
 EB OUTSIDE STA. 243+00, 67' RT., INV. ELEV. = 670.88



DATE	BY	REVISION

DATE	BY	REVISION



DRAINAGE PLAN AND PROFILE - IL. ROUTE 336 - STA. 233+00 TO STA. 245+00