

F.A.P. RTE.	SECTION	COUNTY	TOTAL SHEET SHEETS NO.
315	55-2	McDONOUGH	1025 200
STA. 245+00 TO STA. 257+00			
FED. ROAD DIST. NO. 4 ILLINOIS FED. AID PROJECT			

PIPE UNDERDRAINS 4"

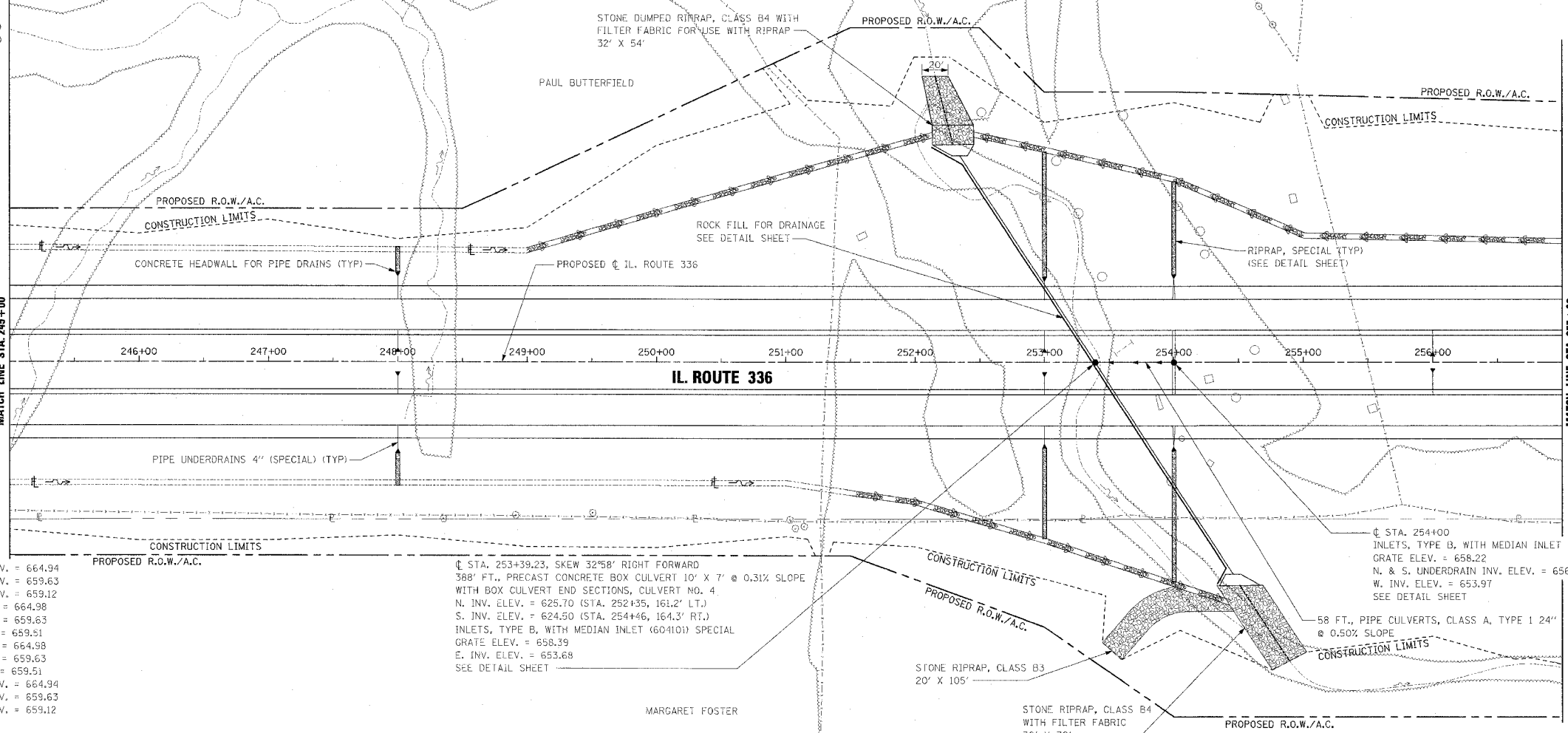
WB OUTSIDE EOP LT. STA. 245+00 TO STA. 254+00  
 WB OUTSIDE EOP LT. STA. 254+00 TO STA. 257+00  
 WB INSIDE EOP LT. STA. 245+00 TO STA. 254+00  
 WB INSIDE EOP LT. STA. 254+00 TO STA. 257+00  
 WB INSIDE EOP LT. STA. 256+00 TO STA. 257+00  
 EB INSIDE EOP RT. STA. 245+00 TO STA. 254+00  
 EB INSIDE EOP RT. STA. 254+00 TO STA. 256+00  
 EB INSIDE EOP RT. STA. 256+00 TO STA. 257+00  
 EB OUTSIDE EOP RT. STA. 245+00 TO STA. 254+00  
 EB OUTSIDE EOP RT. STA. 254+00 TO STA. 257+00

PIPE UNDERDRAINS 4" (SPECIAL)

WB OUTSIDE LT. STA. 248+00, 18' @ 1.00% SLOPE  
 WB OUTSIDE LT. STA. 253+00, 14' @ 1.00% SLOPE  
 WB OUTSIDE LT. STA. 254+00 (W. PIPE), 16' @ 1.56% SLOPE  
 WB OUTSIDE LT. STA. 254+00 (E. PIPE), 16' @ 1.00% SLOPE  
 WB INSIDE LT. STA. 248+00, 14' @ 1.00% SLOPE  
 WB INSIDE LT. STA. 253+00, 14' @ 1.00% SLOPE  
 WB INSIDE LT. STA. 254+00 (W. PIPE), 25' @ 12.60% SLOPE  
 WB INSIDE LT. STA. 254+00 (E. PIPE), 25' @ 12.24% SLOPE  
 WB INSIDE LT. STA. 256+00, 17' @ 1.00% SLOPE  
 EB INSIDE RT. STA. 248+00, 14' @ 1.00% SLOPE  
 EB INSIDE RT. STA. 253+00, 14' @ 1.00% SLOPE  
 EB INSIDE RT. STA. 254+00 (W. PIPE), 25' @ 12.60% SLOPE  
 EB INSIDE RT. STA. 254+00 (E. PIPE), 25' @ 12.24% SLOPE  
 EB INSIDE RT. STA. 256+00, 17' @ 1.00% SLOPE  
 EB OUTSIDE RT. STA. 248+00, 18' @ 1.00% SLOPE  
 EB OUTSIDE RT. STA. 253+00, 14' @ 1.00% SLOPE  
 EB OUTSIDE RT. STA. 254+00 (W. PIPE), 16' @ 1.56% SLOPE  
 EB OUTSIDE RT. STA. 254+00 (E. PIPE), 16' @ 1.00% SLOPE

PERMANENT EROSION CONTROL LEGEND

AGGREGATE DITCH (TO BE PLACED UPON COMPLETION OF DITCH CUT)

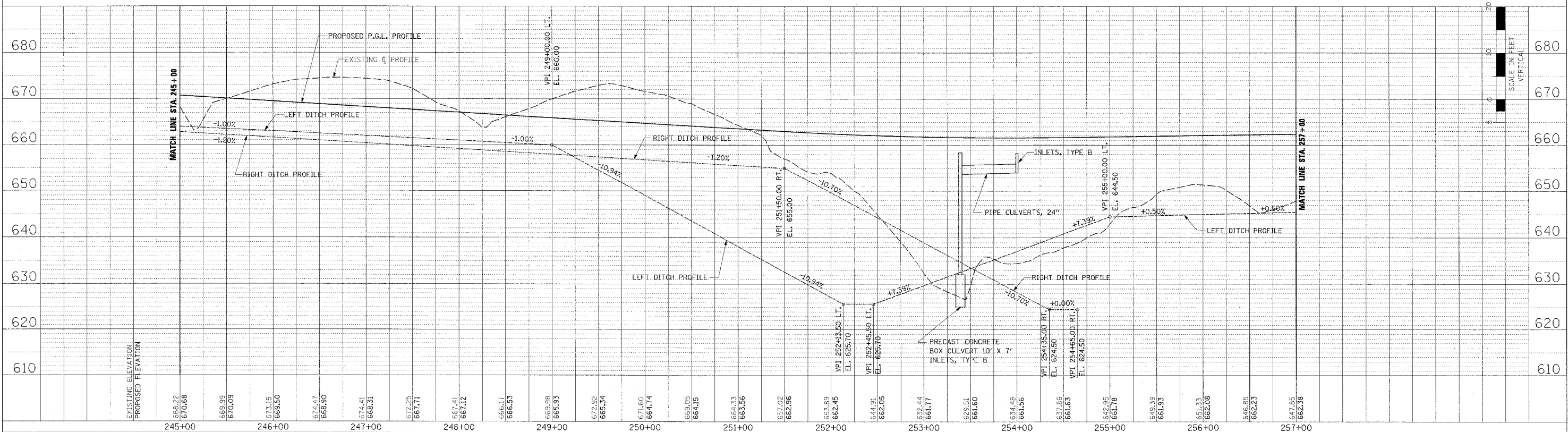
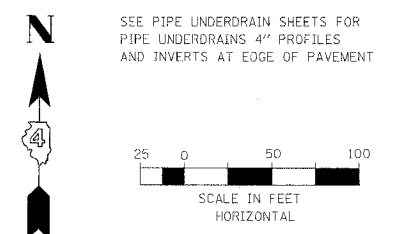


CONCRETE HEADWALL FOR PIPE DRAINS

WB OUTSIDE STA. 248+00, 67' LT., INV. ELEV. = 664.94  
 WB OUTSIDE STA. 253+00, 63' LT., INV. ELEV. = 659.63  
 WB OUTSIDE STA. 254+00, 65' LT., INV. ELEV. = 659.12  
 WB INSIDE STA. 248+00, 11' LT., INV. ELEV. = 664.98  
 WB INSIDE STA. 253+00, 11' LT., INV. ELEV. = 659.63  
 WB INSIDE STA. 256+00, 8' LT., INV. ELEV. = 659.51  
 EB INSIDE STA. 248+00, 11' RT., INV. ELEV. = 664.98  
 EB INSIDE STA. 253+00, 11' RT., INV. ELEV. = 659.63  
 EB INSIDE STA. 256+00, 8' RT., INV. ELEV. = 659.51  
 EB OUTSIDE STA. 248+00, 67' RT., INV. ELEV. = 664.94  
 EB OUTSIDE STA. 253+00, 63' RT., INV. ELEV. = 659.63  
 EB OUTSIDE STA. 254+00, 65' RT., INV. ELEV. = 659.12

ST. STA. 253+39.23, SKEW 32°58' RIGHT FORWARD  
 388' FT., PRECAST CONCRETE BOX CULVERT 10' X 7' @ 0.31% SLOPE  
 WITH BOX CULVERT END SECTIONS, CULVERT NO. 4  
 N. INV. ELEV. = 625.70 (STA. 252+35, 161.2' LT.)  
 S. INV. ELEV. = 624.50 (STA. 254+46, 164.3' RT.)  
 INLETS, TYPE B, WITH MEDIAN INLET (604101) SPECIAL  
 GRATE ELEV. = 658.39  
 E. INV. ELEV. = 653.68  
 SEE DETAIL SHEET

ST. STA. 254+00  
 INLETS, TYPE B, WITH MEDIAN INLET (604101) SPECIAL  
 GRATE ELEV. = 658.22  
 N. & S. UNDERDRAIN INV. ELEV. = 656.22  
 W. INV. ELEV. = 653.97  
 SEE DETAIL SHEET



PROFILES: SURVEYED GRADES CHECKED; PROPOSED GRADES CHECKED; DATE: ; BY: ;

NOTE BOOK NO. ; DATE: ;

STRUCTURE NOTING CHECKED

DRAINAGE PLAN AND PROFILE - IL ROUTE 336 - STA. 245+00 TO STA. 257+00