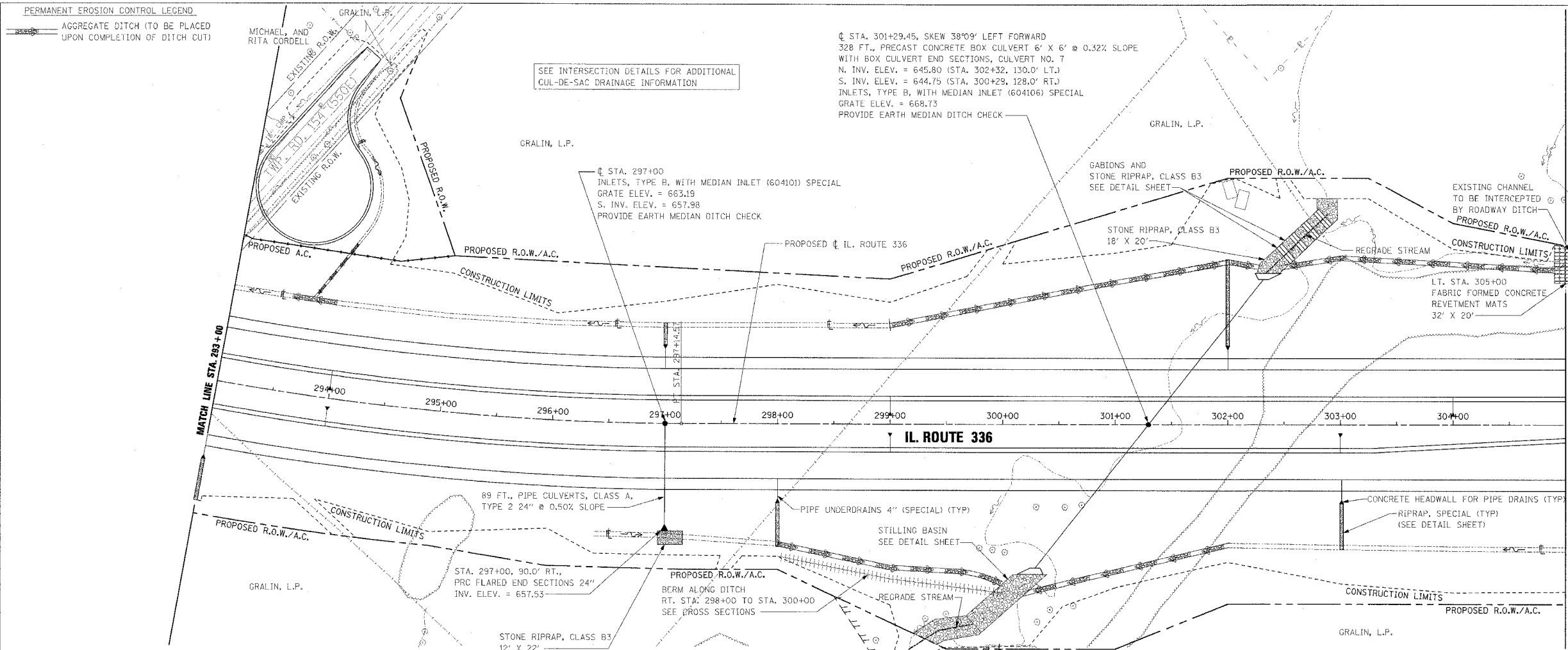


DATE	
BY	
PLAN	
REVISION	
NO. 1	
NO. 2	
NO. 3	
NO. 4	
NO. 5	
NO. 6	
NO. 7	
NO. 8	
NO. 9	
NO. 10	

DATE	
BY	
PROFILE	
REVISION	
NO. 1	
NO. 2	
NO. 3	
NO. 4	
NO. 5	
NO. 6	
NO. 7	
NO. 8	
NO. 9	
NO. 10	



F.A.P. RTE.	SECTION	COUNTY	TOTAL SHEETS	SHEET NO.
315	55-2	McDONOUGH	1025	204
STA. 293+00		TO STA. 305+00		
FED. ROAD DIST. NO. 4		ILLINOIS	FED. AID PROJECT	

PIPE UNDERDRAINS 4"

WB OUTSIDE EOP LT. STA. 293+00 TO STA. 305+00
 WB INSIDE EOP LT. STA. 293+00 TO STA. 305+00
 EB INSIDE EOP RT. STA. 293+00 TO STA. 305+00
 EB OUTSIDE EOP RT. STA. 293+00 TO STA. 305+00

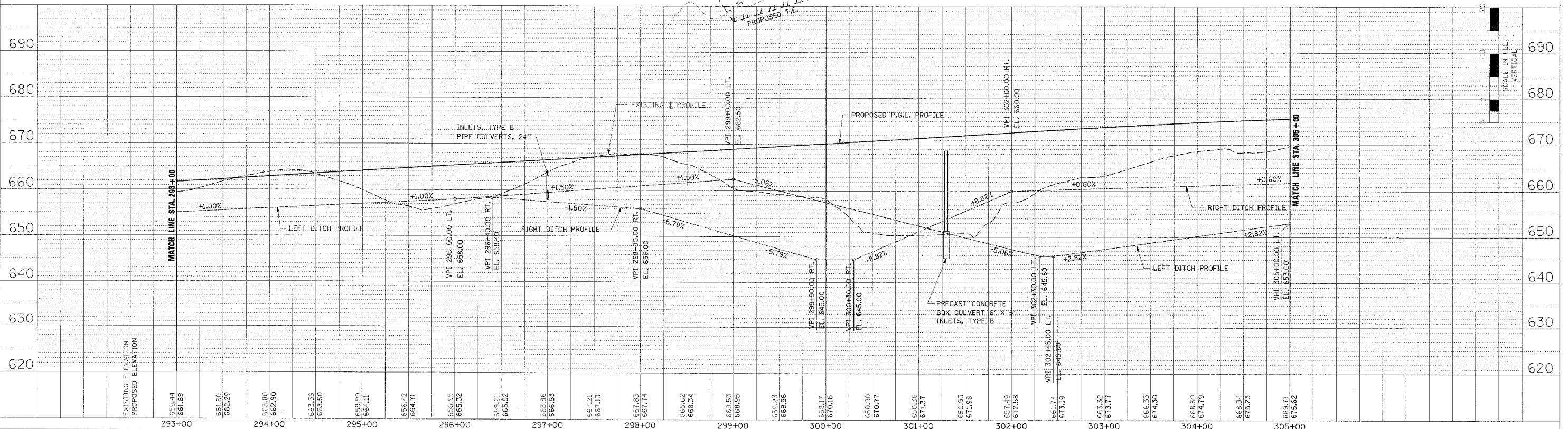
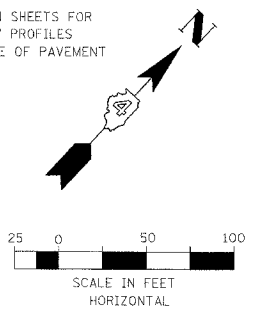
PIPE UNDERDRAINS 4" (SPECIAL)

WB OUTSIDE LT. STA. 297+00, 18' @ 1.00% SLOPE
 WB OUTSIDE LT. STA. 302+00, 18' @ 1.00% SLOPE
 WB INSIDE LT. STA. 294+00, 14' @ 1.00% SLOPE
 WB INSIDE LT. STA. 299+00, 14' @ 1.00% SLOPE
 WB INSIDE LT. STA. 304+00, 14' @ 1.00% SLOPE
 EB INSIDE RT. STA. 294+00, 14' @ 1.00% SLOPE
 EB INSIDE RT. STA. 299+00, 14' @ 1.00% SLOPE
 EB INSIDE RT. STA. 303+00, 14' @ 1.00% SLOPE
 EB OUTSIDE RT. STA. 298+00, 18' @ 1.00% SLOPE
 EB OUTSIDE RT. STA. 303+00, 18' @ 1.00% SLOPE

CONCRETE HEADWALL FOR PIPE DRAINS

WB OUTSIDE STA. 297+00, 67' LT., INV. ELEV. = 663.46
 WB OUTSIDE STA. 302+00, 67' LT., INV. ELEV. = 670.40
 WB INSIDE STA. 294+00, 11' LT., INV. ELEV. = 660.76
 WB INSIDE STA. 299+00, 11' LT., INV. ELEV. = 666.81
 WB INSIDE STA. 304+00, 11' LT., INV. ELEV. = 672.65
 EB INSIDE STA. 294+00, 11' RT., INV. ELEV. = 660.76
 EB INSIDE STA. 299+00, 11' RT., INV. ELEV. = 666.81
 EB INSIDE STA. 303+00, 11' RT., INV. ELEV. = 671.44
 EB OUTSIDE STA. 298+00, 67' RT., INV. ELEV. = 666.24
 EB OUTSIDE STA. 302+00, 67' RT., INV. ELEV. = 671.59

SEE PIPE UNDERDRAIN SHEETS FOR PIPE UNDERDRAINS 4" PROFILES AND INVERTS AT EDGE OF PAVEMENT



DRAINAGE PLAN AND PROFILE - IL. ROUTE 336 - STA. 293+00 TO STA. 305+00