

PERMANENT EROSION CONTROL LEGEND

AGGREGATE DITCH (TO BE PLACED UPON COMPLETION OF DITCH CUT)

© STA. 348+88
INLETS, TYPE B, WITH MEDIAN INLET (604101) SPECIAL
GRATE ELEV. = 676.65
N. & S. UNDERDRAIN INV. ELEV. = 674.65
S. INV. ELEV. = 668.92

8 FT. PIPE CULVERTS, CLASS A,
TYPE 1 18" (CONNECT TO EXISTING PIPE)
EXISTING INV. ELEV. = ±676.2
S. INV. ELEV. = 676.0 (STA. 349+91, 109.3' LT.)

STA. 349+91, 109.3' LT.,
PRC FLARED END SECTIONS 18"
INV. ELEV. = 676.0

STA. 350+74, 6.0' RT.,
INLETS, TYPE B, WITH
MEDIAN INLET (604101) SPECIAL
GRATE ELEV. = 676.26
N. & S. UNDERDRAIN INV. ELEV. = 674.26
S. INV. ELEV. = 669.39
SEE DETAIL SHEET

F.A.P. RTE.	SECTION	COUNTY	TOTAL SHEETS	SHEET NO.
315	55-2	MCDONOUGH	1025	208

STA. 341+00 TO STA. 353+00
FED. ROAD DIST. NO. 4 ILLINOIS FED. AID PROJECT

PIPE UNDERDRAINS 4"

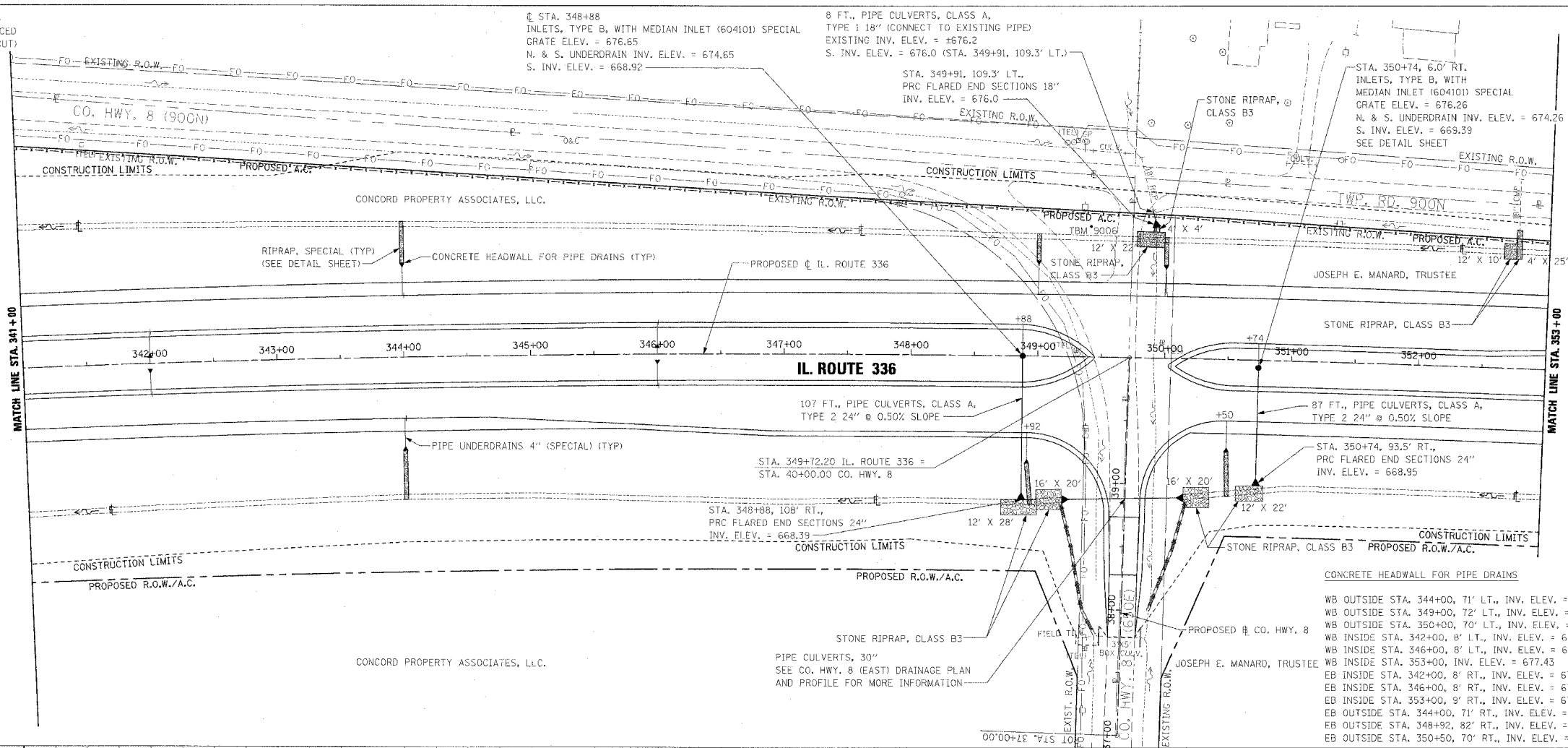
WB OUTSIDE EOP LT. STA. 341+00 TO STA. 344+00
WB OUTSIDE EOP LT. STA. 344+00 TO STA. 350+00
WB OUTSIDE EOP LT. STA. 350+00 TO STA. 353+00
WB INSIDE EOP LT. STA. 341+00 TO STA. 342+00
WB INSIDE EOP LT. STA. 342+00 TO STA. 346+00
WB INSIDE EOP LT. STA. 346+00 TO STA. 348+88
WB INSIDE EOP LT. STA. 350+74 TO STA. 353+00
EB INSIDE EOP RT. STA. 341+00 TO STA. 342+00
EB INSIDE EOP RT. STA. 342+00 TO STA. 346+00
EB INSIDE EOP RT. STA. 346+00 TO STA. 348+88
EB INSIDE EOP RT. STA. 350+74 TO STA. 353+00
EB OUTSIDE EOP RT. STA. 341+00 TO STA. 344+00
EB OUTSIDE EOP RT. STA. 344+00 TO STA. 348+92
EB OUTSIDE EOP RT. STA. 350+50 TO STA. 353+00

PIPE UNDERDRAINS 4" (SPECIAL)

WB OUTSIDE LT. STA. 344+00, 22' @ 1.00% SLOPE
WB OUTSIDE LT. STA. 349+00, 23' @ 2.74% SLOPE
WB OUTSIDE LT. STA. 350+00, (W. PIPE), 21' @ 1.00% SLOPE
WB OUTSIDE LT. STA. 350+00, (E. PIPE), 21' @ 1.00% SLOPE
WB INSIDE LT. STA. 342+00, 17' @ 1.00% SLOPE
WB INSIDE LT. STA. 346+00, 17' @ 1.00% SLOPE
WB INSIDE LT. STA. 348+88, 19' @ 11.42% SLOPE
WB INSIDE LT. STA. 350+74, 19' @ 11.00% SLOPE
WB INSIDE LT. STA. 353+00, 15' @ 1.00% SLOPE
EB INSIDE RT. STA. 342+00, 17' @ 1.00% SLOPE
EB INSIDE RT. STA. 346+00, 17' @ 1.00% SLOPE
EB INSIDE RT. STA. 348+88, 19' @ 11.42% SLOPE
EB INSIDE RT. STA. 350+74, 19' @ 11.00% SLOPE
EB INSIDE RT. STA. 353+00, 16' @ 1.00% SLOPE
EB OUTSIDE RT. STA. 344+00, 22' @ 1.00% SLOPE
EB OUTSIDE RT. STA. 348+92, 21' @ 1.00% SLOPE
EB OUTSIDE RT. STA. 350+50, 21' @ 1.00% SLOPE

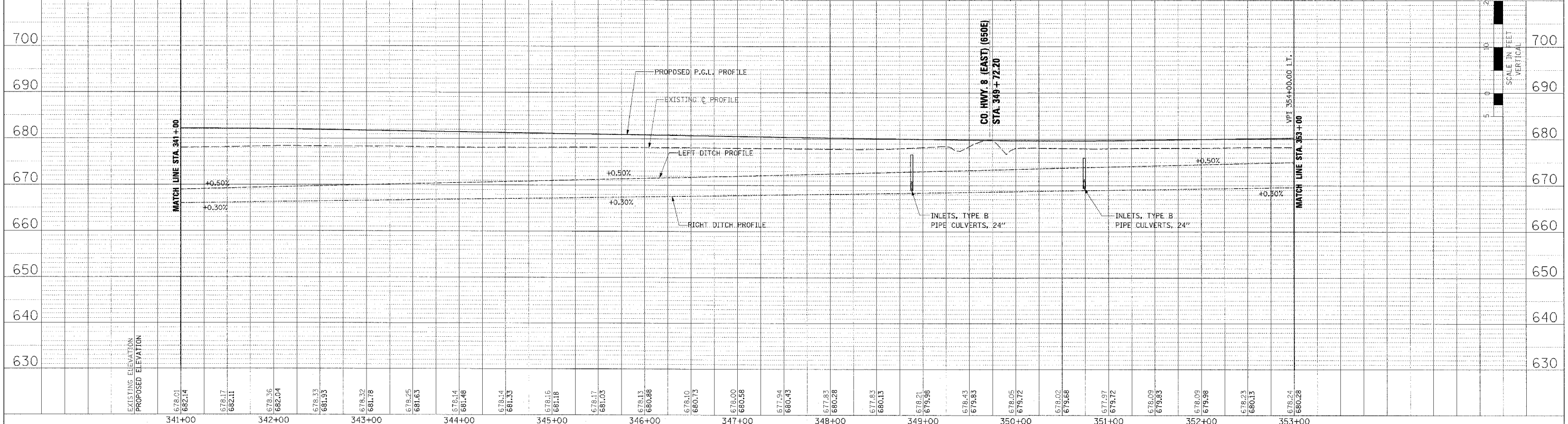
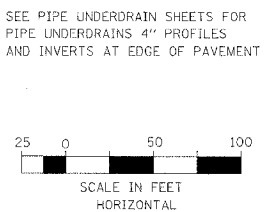
PLAN	DATE	BY
DESIGNED		
PLOTTED		
CHECKED		
NOTED		
DATE		
BY		

PROFILE	DATE	BY
DESIGNED		
PLOTTED		
CHECKED		
NOTED		
DATE		
BY		



CONCRETE HEADWALL FOR PIPE DRAINS

WB OUTSIDE STA. 344+00, 71' LT., INV. ELEV. = 677.67
WB OUTSIDE STA. 349+00, 72' LT., INV. ELEV. = 675.95
WB OUTSIDE STA. 350+00, 70' LT., INV. ELEV. = 676.27
WB INSIDE STA. 342+00, 8' LT., INV. ELEV. = 678.52
WB INSIDE STA. 346+00, 8' LT., INV. ELEV. = 677.41
WB INSIDE STA. 353+00, INV. ELEV. = 677.43
EB INSIDE STA. 342+00, 8' RT., INV. ELEV. = 678.52
EB INSIDE STA. 346+00, 8' RT., INV. ELEV. = 677.41
EB INSIDE STA. 353+00, 9' RT., INV. ELEV. = 677.42
EB OUTSIDE STA. 344+00, 71' RT., INV. ELEV. = 677.67
EB OUTSIDE STA. 348+92, 82' RT., INV. ELEV. = 676.40
EB OUTSIDE STA. 350+50, 70' RT., INV. ELEV. = 677.33



DRAINAGE PLAN AND PROFILE - IL. ROUTE 336 - STA. 341+00 TO STA. 353+00