

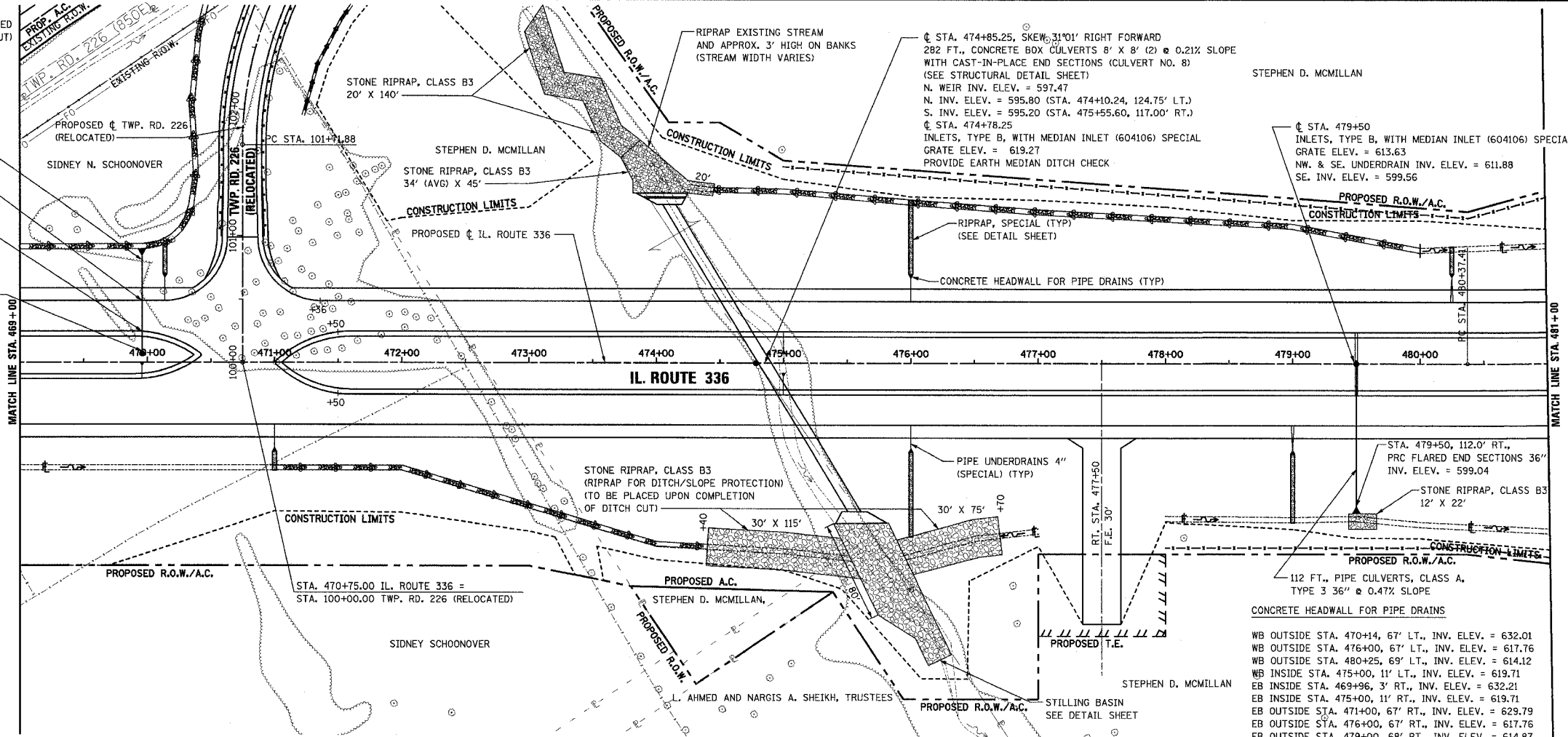
PERMANENT EROSION CONTROL LEGEND
 AGGREGATE DITCH (TO BE PLACED UPON COMPLETION OF DITCH CUT)

STA. 469+96, 84' LT. PRC FLARED END SECTIONS 24" INV. ELEV. 628.34 PROTECT END SECTION WITH AGGREGATE DITCH

76 FT., PIPE CULVERTS, CLASS A, TYPE 2 24", @ 0.50% SLOPE

OUTLET UNDERDRAIN DIRECTLY INTO 24" SS

STA. 469+96, 7.0' LT. INLETS, TYPE B, WITH MEDIAN INLET (604101) SPECIAL GRATE ELEV. = 632.21 NW. INV. ELEV. = 628.71



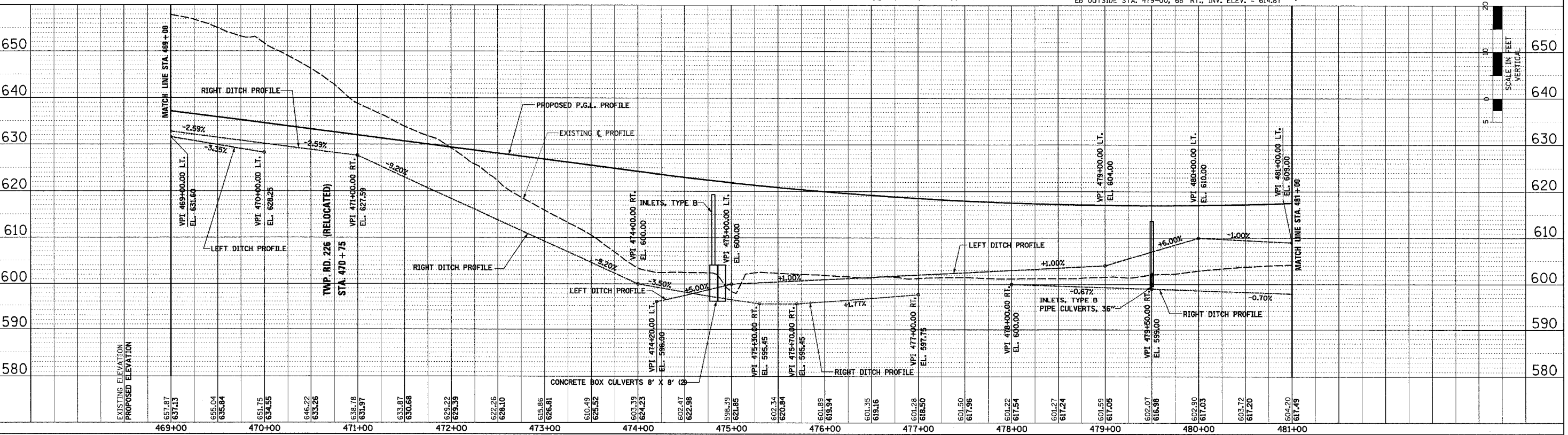
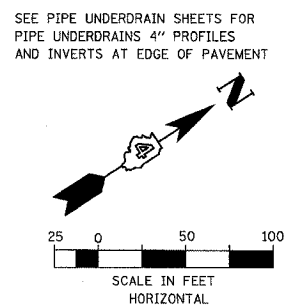
F.A.P. RTE.	SECTION	COUNTY	TOTAL SHEETS	SHEET NO.
315	55-2	McDONOUGH	1025	219
STA. 469+00 TO STA. 481+00				
FED. ROAD DIST. NO. 4 ILLINOIS FED. AID PROJECT				

PIPE UNDERDRAINS 4"

WB OUTSIDE EOP LT. STA. 469+00 TO STA. 470+14
 WB OUTSIDE EOP LT. STA. 471+36 TO STA. 480+25
 WB OUTSIDE EOP LT. STA. 480+25 TO STA. 481+00
 WB INSIDE EOP LT. STA. 469+00 TO STA. 469+98
 WB INSIDE EOP LT. STA. 471+50 TO STA. 479+50
 WB INSIDE EOP LT. STA. 479+50 TO STA. 481+00
 EB INSIDE EOP RT. STA. 469+00 TO STA. 469+96
 EB INSIDE EOP RT. STA. 471+50 TO STA. 479+50
 EB INSIDE EOP RT. STA. 479+50 TO STA. 481+00
 EB OUTSIDE EOP RT. STA. 469+00 TO STA. 479+00
 EB OUTSIDE EOP RT. STA. 479+00 TO STA. 481+00

PIPE UNDERDRAINS 4" (SPECIAL)

WB OUTSIDE LT. STA. 470+14, 18' @ 1.00% SLOPE
 WB OUTSIDE LT. STA. 476+00, 18' @ 1.00% SLOPE
 WB OUTSIDE LT. STA. 480+25 (W. PIPE), 20' @ 1.00% SLOPE
 WB OUTSIDE LT. STA. 480+25 (E. PIPE), 20' @ 1.60% SLOPE
 WB INSIDE LT. STA. 475+00 (W. PIPE), 25' @ 11.84% SLOPE
 WB INSIDE LT. STA. 479+50 (E. PIPE), 25' @ 11.68% SLOPE
 EB INSIDE RT. STA. 469+96, 10' @ 1.00% SLOPE
 EB INSIDE RT. STA. 475+00, 14' @ 1.00% SLOPE
 EB INSIDE RT. STA. 479+50 (W. PIPE), 25' @ 3.06% SLOPE
 EB INSIDE RT. STA. 479+50 (E. PIPE), 25' @ 1.00% SLOPE
 EB OUTSIDE RT. STA. 471+00, 18' @ 1.00% SLOPE
 EB OUTSIDE RT. STA. 476+00, 18' @ 1.00% SLOPE
 EB OUTSIDE RT. STA. 479+00 (W. PIPE), 19' @ 1.68% SLOPE
 EB OUTSIDE RT. STA. 479+00 (E. PIPE), 19' @ 1.00% SLOPE



DRAINAGE PLAN AND PROFILE - IL. ROUTE 336 - STA. 469+00 TO STA. 481+00

DATE	BY	REVISION

DATE	BY	REVISION

3/20/2011 10:35:35 AM