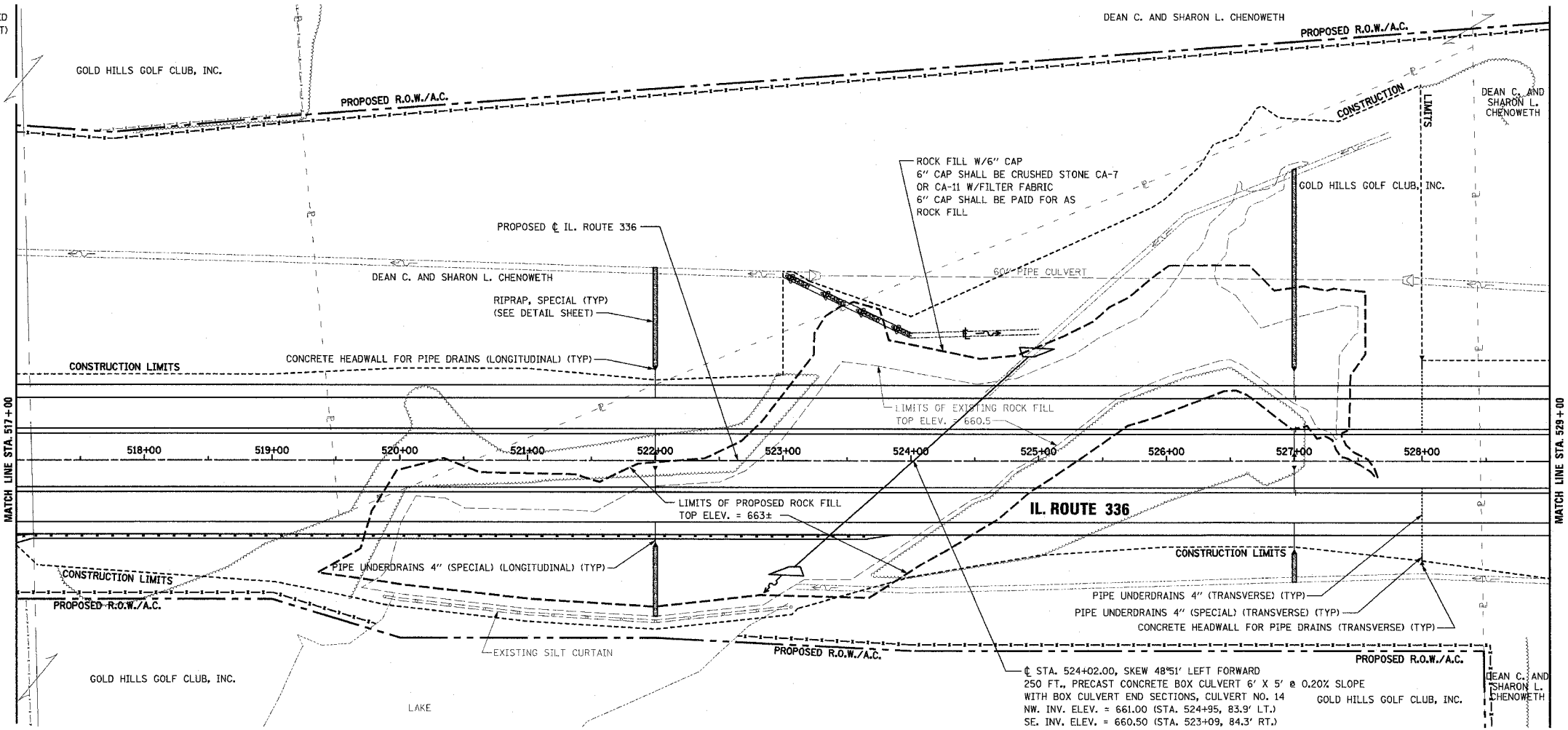


PERMANENT EROSION CONTROL LEGEND  
 AGGREGATE DITCH (TO BE PLACED UPON COMPLETION OF DITCH CUT)

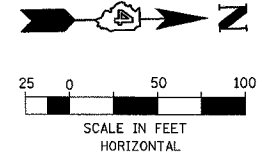
F.A.P. RTE.	SECTION	COUNTY	TOTAL SHEETS	SHEET NO.
315	55-2	McDONOUGH	1025	223
STA. 517+00		TO STA. 529+00		
FED. ROAD DIST. NO. 4 ILLINOIS FED. AID PROJECT				



- PIPE UNDERDRAINS 4" (LONGITUDINAL)**
- WB OUTSIDE EOP LT. STA. 517+00 TO STA. 527+00
  - WB OUTSIDE EOP LT. STA. 527+00 TO STA. 529+00
  - WB INSIDE EOP LT. STA. 517+00 TO STA. 527+00
  - WB INSIDE EOP LT. STA. 527+00 TO STA. 529+00
  - EB INSIDE EOP RT. STA. 517+00 TO STA. 527+00
  - EB INSIDE EOP RT. STA. 527+00 TO STA. 529+00
  - EB OUTSIDE EOP RT. STA. 517+00 TO STA. 529+00
- PIPE UNDERDRAINS 4" (SPECIAL) (LONGITUDINAL)**
- WB OUTSIDE LT. STA. 522+00, 21' @ 1.00% SLOPE
  - WB OUTSIDE LT. STA. 527+00, 21' @ 1.00% SLOPE
  - WB INSIDE LT. STA. 522+00, 17' @ 1.00% SLOPE
  - WB INSIDE LT. STA. 527+00, 17' @ 1.00% SLOPE
  - EB INSIDE RT. STA. 522+00, 17' @ 1.00% SLOPE
  - EB INSIDE RT. STA. 527+00, 18' @ 1.00% SLOPE
  - EB OUTSIDE RT. STA. 522+00, 16' @ 1.00% SLOPE
  - EB OUTSIDE RT. STA. 527+00, 21' @ 1.00% SLOPE
- CONCRETE HEADWALL FOR PIPE DRAINS (LONGITUDINAL)**
- WB OUTSIDE STA. 522+00, 70' LT., INV. ELEV. = 669.71
  - WB OUTSIDE STA. 527+00, 70' LT., INV. ELEV. = 667.71
  - WB INSIDE STA. 522+00, 8' LT., INV. ELEV. = 669.74
  - WB INSIDE STA. 527+00, 7' LT., INV. ELEV. = 667.73
  - EB INSIDE STA. 522+00, 8' RT., INV. ELEV. = 669.74
  - EB INSIDE STA. 527+00, 8' RT., INV. ELEV. = 667.73
  - EB OUTSIDE STA. 522+00, 65' RT., INV. ELEV. = 669.76
  - EB OUTSIDE STA. 527+00, 70' RT., INV. ELEV. = 667.71

SEE PIPE UNDERDRAIN SHEETS FOR PIPE UNDERDRAINS 4" PROFILES AND INVERTS AT EDGE OF PAVEMENT.

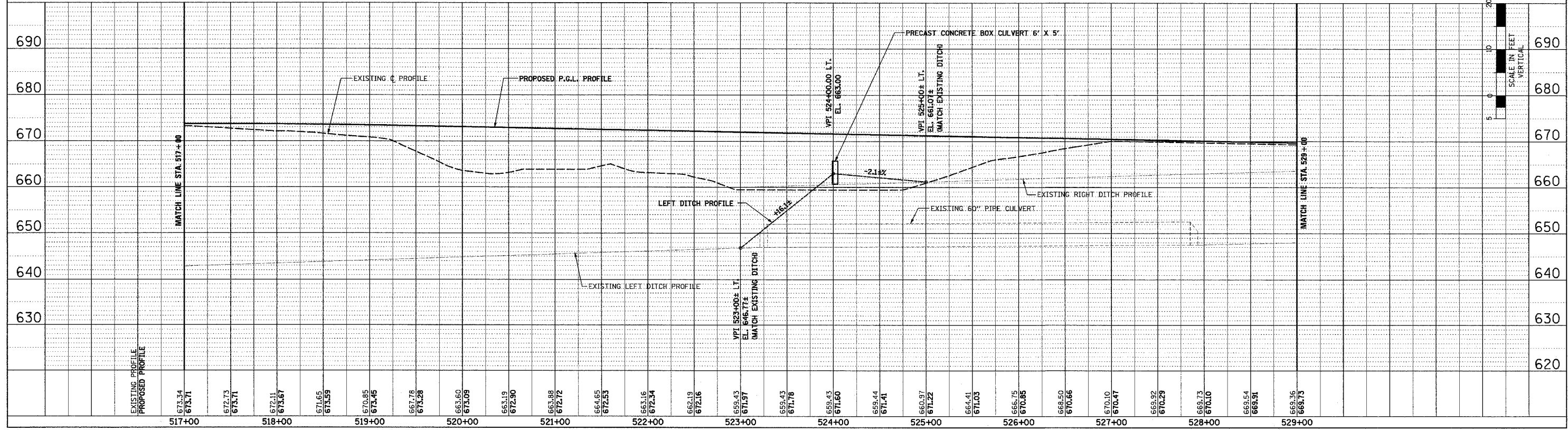
SEE TRANSVERSE DRAIN DETAIL SHEETS FOR ADDITIONAL PIPE UNDERDRAINS 4" (TRANSVERSE) AND/OR 6" (TRANSVERSE) DETAILS.



IL. ROUTE 336  
 STA. 524+02.00, SKEW 48°51' LEFT FORWARD  
 250 FT., PRECAST CONCRETE BOX CULVERT 6' X 5' @ 0.20% SLOPE  
 WITH BOX CULVERT END SECTIONS, CULVERT NO. 14  
 NW. INV. ELEV. = 661.00 (STA. 524+95, 83.9' LT.)  
 SE. INV. ELEV. = 660.50 (STA. 523+09, 84.3' RT.)

PLAN	DATE	BY
REVISION		
ALIGNED		
CHECKED		
DATE		
NOTE BOOK		
NO.		

PROFILE	DATE	BY
GRADES CHECKED		
PLOTTED		
STRUCTURE NOTATION OK'D		
NO.		



**DRAINAGE PLAN AND PROFILE - IL. ROUTE 336 - STA. 517+00 TO STA. 529+00**