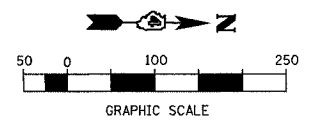


F.A.P. RTE.	SECTION	COUNTY	TOTAL SHEETS	SHEET NO.
315	55-2	McDONOUGH	1025	226
STA.		TO STA.		
FED. ROAD DIST. NO. 4 ILLINOIS FED. AID PROJECT				



② STA. 20+00  
56 FT. PIPE CULVERTS,  
CLASS A, TYPE 2 24" @ 0.78% SLOPE  
WITH PRC FLARED END SECTIONS 24"  
E. INV. ELEV. = 663.94 (STA. 20+00, 20.0' RT.)  
W. INV. ELEV. = 663.50 (STA. 20+00, 36.0' LT.)

② STA. 27+00  
52 FT. PIPE CULVERTS,  
CLASS A, TYPE 1 30" @ 0.62% SLOPE  
WITH PRC FLARED END SECTIONS 30"  
E. INV. ELEV. = 657.57 (STA. 27+00, 34.0' RT.)  
W. INV. ELEV. = 657.25 (STA. 27+00, 18.0' RT.)

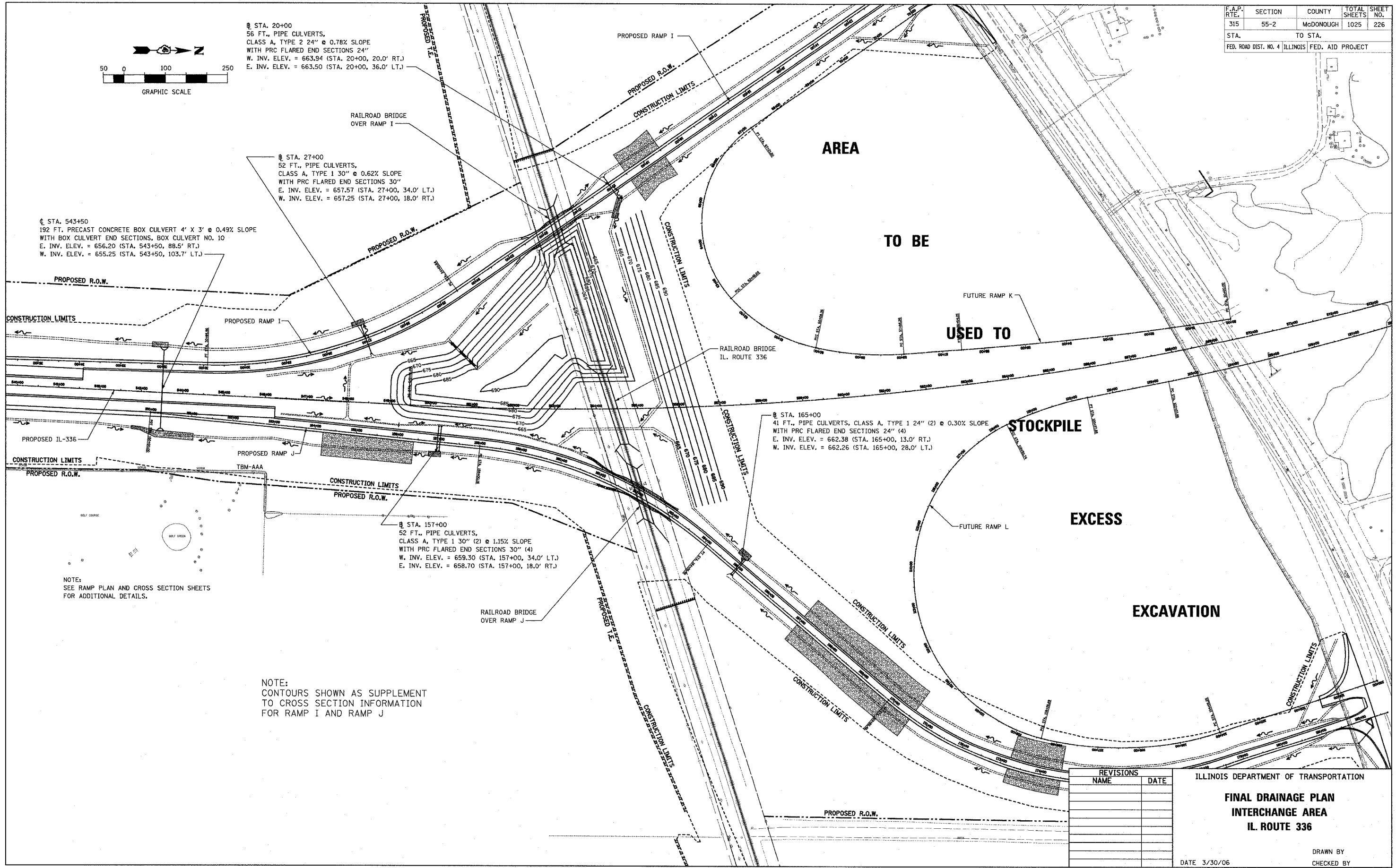
② STA. 543+50  
192 FT. PRECAST CONCRETE BOX CULVERT 4' X 3' @ 0.49% SLOPE  
WITH BOX CULVERT END SECTIONS, BOX CULVERT NO. 10  
E. INV. ELEV. = 656.20 (STA. 543+50, 88.5' RT.)  
W. INV. ELEV. = 655.25 (STA. 543+50, 103.7' LT.)

② STA. 165+00  
41 FT. PIPE CULVERTS, CLASS A, TYPE 1 24" (2) @ 0.30% SLOPE  
WITH PRC FLARED END SECTIONS 24" (4)  
E. INV. ELEV. = 662.38 (STA. 165+00, 13.0' RT.)  
W. INV. ELEV. = 662.26 (STA. 165+00, 28.0' LT.)

② STA. 157+00  
52 FT. PIPE CULVERTS,  
CLASS A, TYPE 1 30" (2) @ 1.15% SLOPE  
WITH PRC FLARED END SECTIONS 30" (4)  
W. INV. ELEV. = 659.30 (STA. 157+00, 34.0' LT.)  
E. INV. ELEV. = 658.70 (STA. 157+00, 18.0' RT.)

NOTE:  
SEE RAMP PLAN AND CROSS SECTION SHEETS  
FOR ADDITIONAL DETAILS.

NOTE:  
CONTOURS SHOWN AS SUPPLEMENT  
TO CROSS SECTION INFORMATION  
FOR RAMP I AND RAMP J



REVISIONS	NAME	DATE

ILLINOIS DEPARTMENT OF TRANSPORTATION  
**FINAL DRAINAGE PLAN  
INTERCHANGE AREA  
IL. ROUTE 336**  
DATE 3/30/06  
DRAWN BY  
CHECKED BY