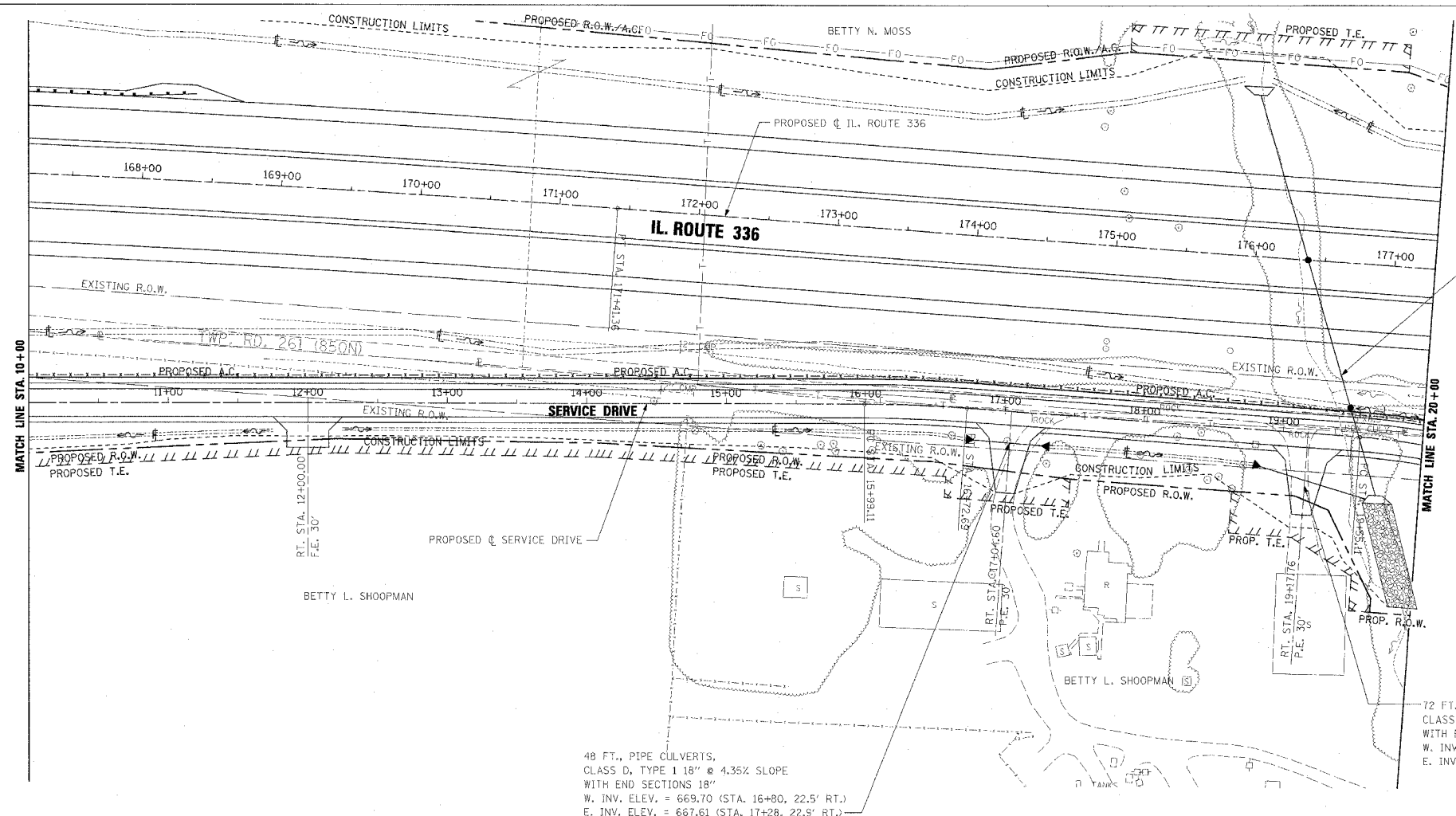


F.A.P. RTE.	SECTION	COUNTY	TOTAL SHEETS	SHEET NO.
315	55-2	MCDONOUGH	1025	237
STA. 10+00		TO STA. 20+00		
FED. ROAD DIST. NO. 4 ILLINOIS FED. AID PROJECT				

PERMANENT EROSION CONTROL LEGEND
 AGGREGATE DITCH (TO BE PLACED UPON COMPLETION OF DITCH CUT)

PLAN	DATE
REVISIONS	BY
NOTED BOOK	
FILE NAME	

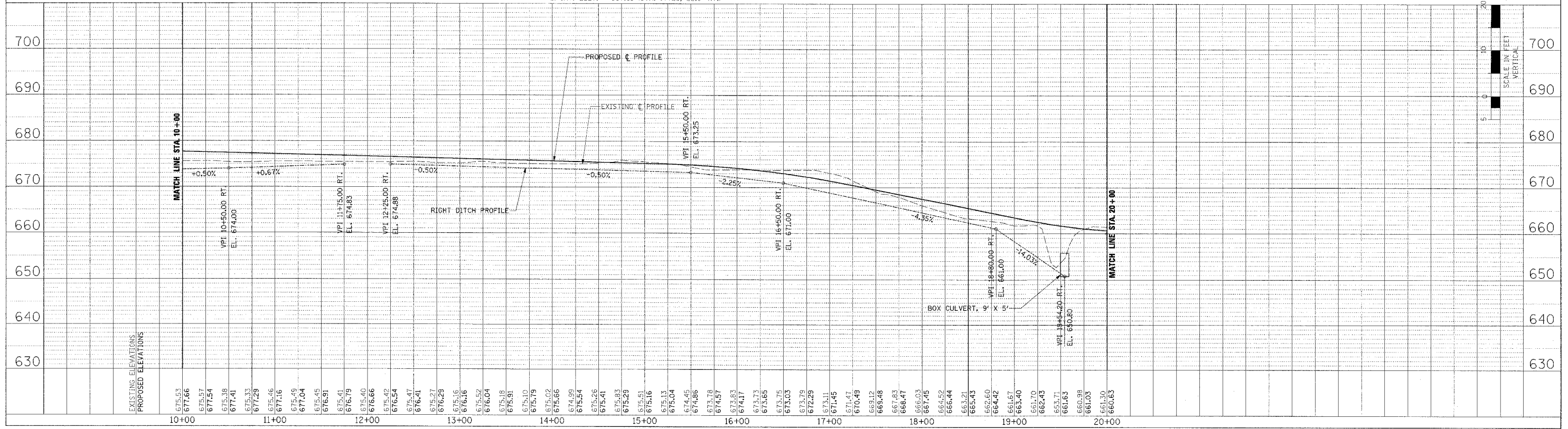
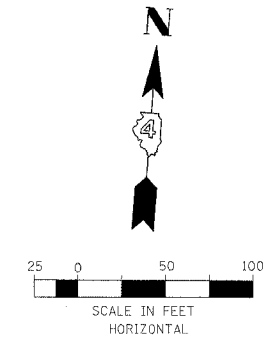
PROFILE	DATE
REVISIONS	BY
NOTED BOOK	
FILE NAME	



BOX CULVERT 9' X 5'
 SEE IL. ROUTE 336
 DRAINAGE PLAN AND PROFILE
 FOR MORE INFORMATION

48 FT. PIPE CULVERTS,
 CLASS D, TYPE 1 18" @ 4.35% SLOPE
 WITH END SECTIONS 18"
 W. INV. ELEV. = 669.70 (STA. 16+80, 22.5' RT.)
 E. INV. ELEV. = 667.61 (STA. 17+28, 22.5' RT.)

72 FT. PIPE CULVERTS,
 CLASS D, TYPE 1 18" @ 14.03% SLOPE
 WITH END SECTIONS 18"
 W. INV. ELEV. = 660.90 (STA. 18+95.9, 26.6' RT.)
 E. INV. ELEV. = 650.80 (STA. 19+54.2, 48.8' RT.)



DRAINAGE PLAN AND PROFILE - SERVICE DRIVE - STA. 10+00 TO STA. 20+00