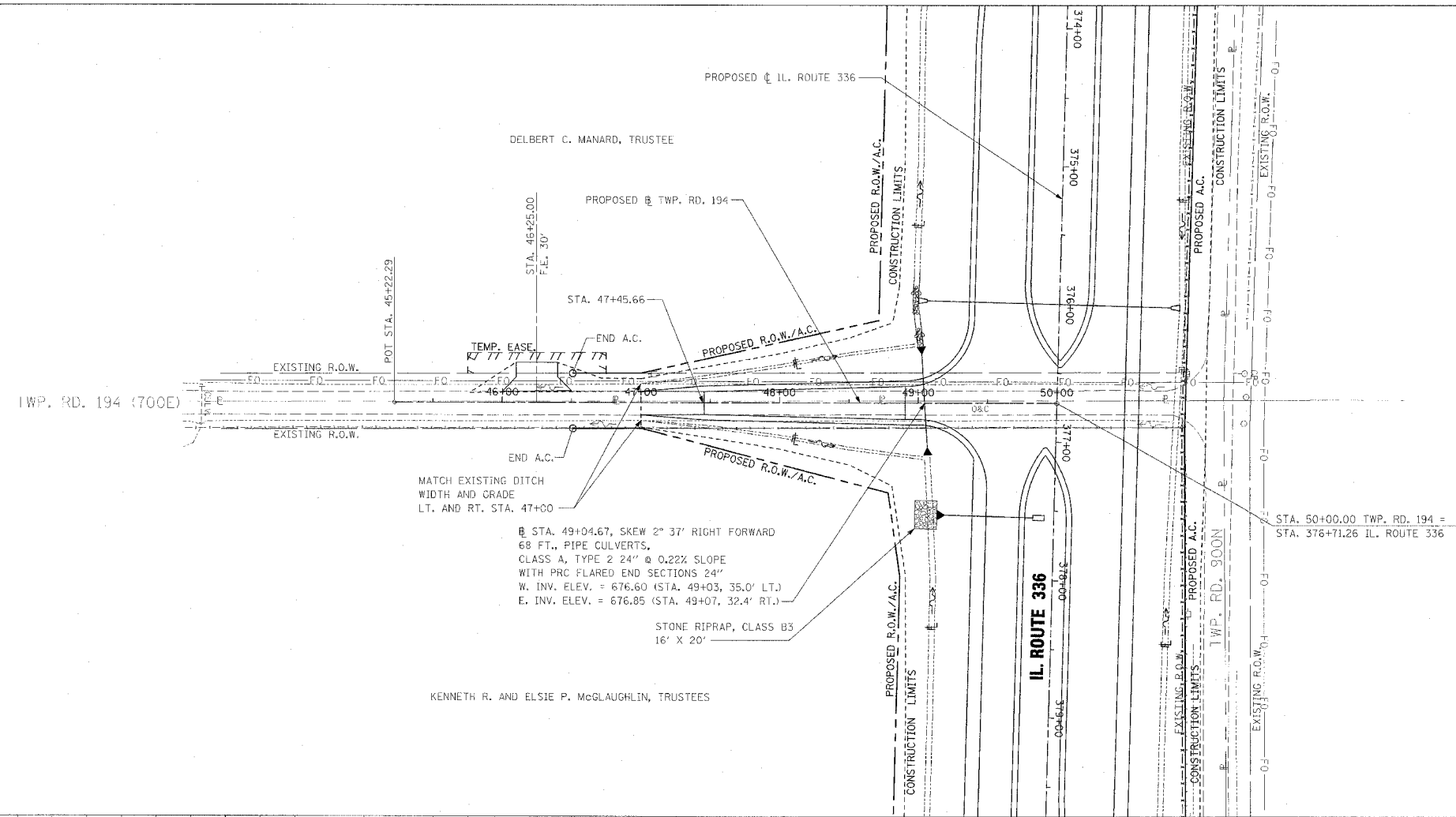


F.A.P. RTE.	SECTION	COUNTY	TOTAL SHEETS	SHEET NO.
315	55-2	MCDONOUGH	1025	244
STA. 46+00		TO STA. 51+15.22		
FED. ROAD DIST. NO. 4 ILLINOIS FED. AID PROJECT				

PERMANENT EROSION CONTROL LEGEND
 AGGREGATE DITCH (TO BE PLACED UPON COMPLETION OF DITCH CUT)

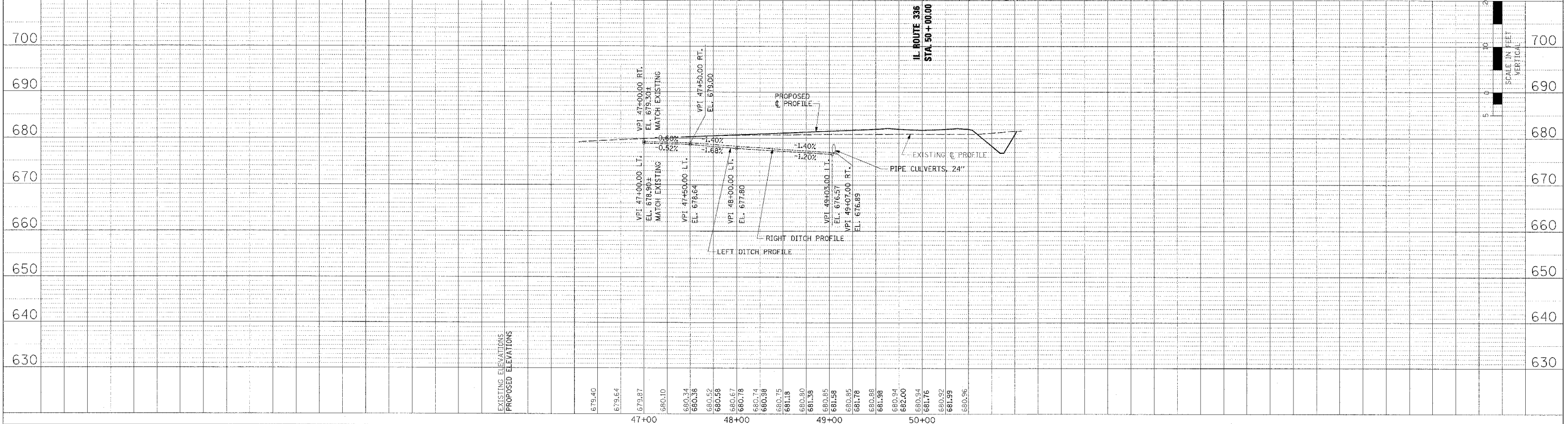
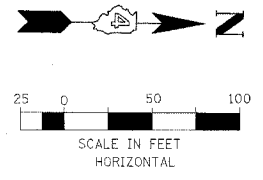
PLANNED	BY	DATE
DESIGNED		
CHECKED		
APPROVED		

PROFILE	BY	DATE
DESIGNED		
CHECKED		
APPROVED		



AT STA. 49+04.67, SKEW 2° 37' RIGHT FORWARD
 68 FT. PIPE CULVERTS,
 CLASS A, TYPE 2 24" @ 0.22% SLOPE
 WITH PRC FLARED END SECTIONS 24"
 W. INV. ELEV. = 676.60 (STA. 49+03, 35.0' LT.)
 E. INV. ELEV. = 676.85 (STA. 49+07, 32.4' RT.)

STONE RIPRAP, CLASS B3
 16' X 20'



DRAINAGE PLAN AND PROFILE - TWP. RD. 194 - STA. 46+00 TO STA. 51+15.22