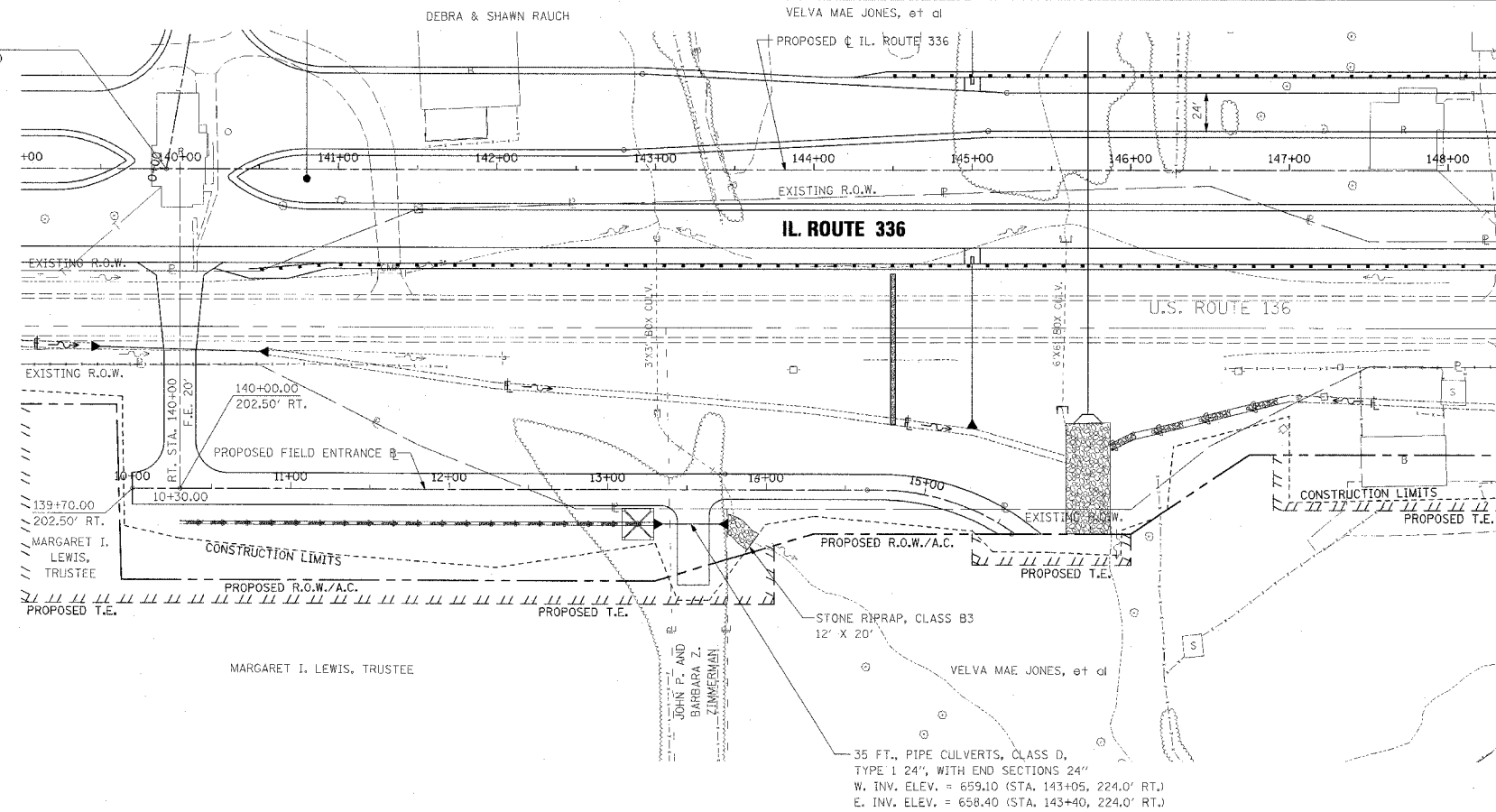


DATE	BY	CHECKED
PLAN	DESIGNED	ALIGNED

DATE	BY	CHECKED
PROFILE	DESIGNED	ALIGNED

STA. 139+91.36 IL. ROUTE 336 =  
STA. 0+00.00 U.S. ROUTE 136 (RELOCATED)



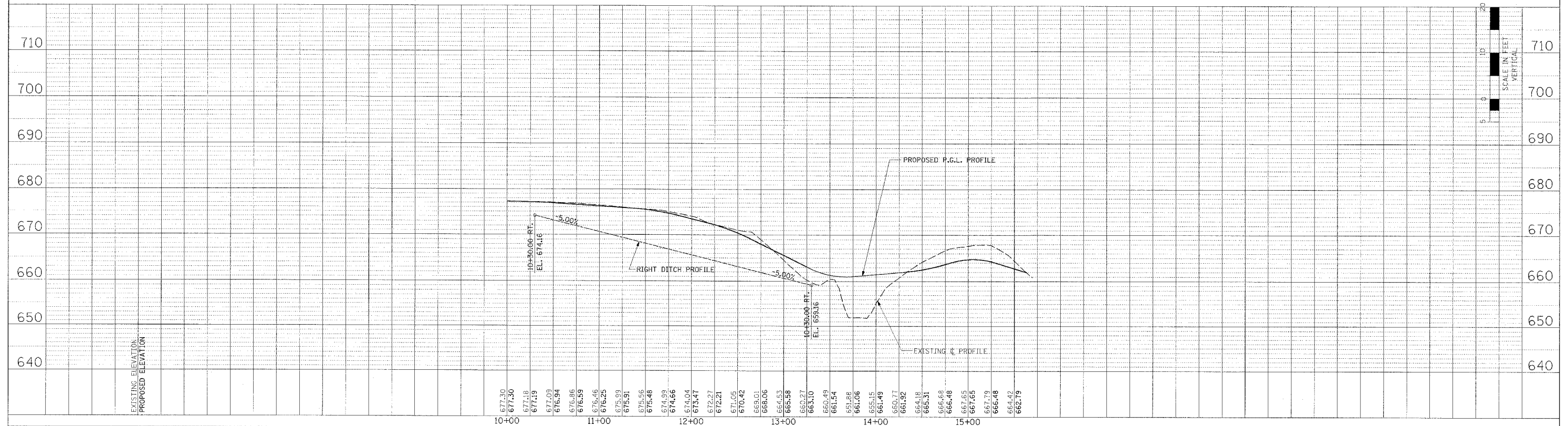
F.A.P. RTE.	SECTION	COUNTY	TOTAL SHEETS	SHEET NO.
315	55-2	McDONOUGH	1025	250A
STA. 139+00		TO STA. 151+00		
FED. ROAD DIST. NO. 4 ILLINOIS FED. AID PROJECT				

TEMPORARY EROSION CONTROL LEGEND

- ◇ TEMPORARY DITCH CHECK
- ⊗ INLET AND PIPE PROTECTION
- ▨ EROSION CONTROL BLANKET
- HD ▨ HEAVY DUTY EROSION CONTROL BLANKET
- ▬ AGGREGATE DITCH (TO BE PLACED UPON COMPLETION OF DITCH CUT)
- PERIMETER EROSION BARRIER



SEE IL. ROUTE 336 FOR  
FIELD ENTRANCE CROSS SECTIONS.



**DRAINAGE AND EROSION CONTROL PLAN AND PROFILE - FIELD ENTRANCE AT IL. ROUTE 336 - STA. 140+00 RT.**