

F.A.P. RTE.	SECTION	COUNTY	TOTAL SHEETS	SHEET NO.
315	55-2	McDONOUGH	1025	310
STA. 116+98.59		TO STA. 127+00		
FED. ROAD DIST. NO. 4 ILLINOIS FED. AID PROJECT				

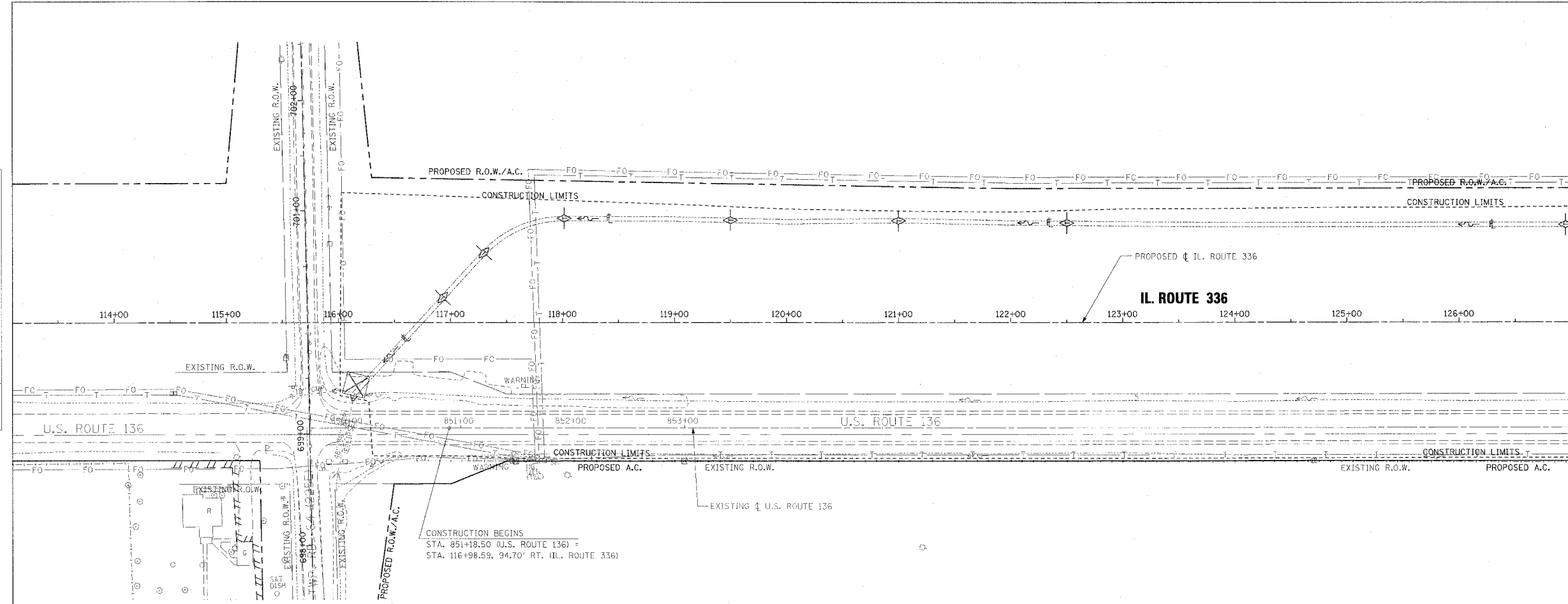
- TEMPORARY EROSION CONTROL LEGEND**
- TEMPORARY DITCH CHECK
 - INLET AND PIPE PROTECTION
 - EROSION CONTROL BLANKET
 - HEAVY DUTY EROSION CONTROL BLANKET
 - AGGREGATE DITCH (TO BE PLACED UPON COMPLETION OF DITCH CUT)
 - PERIMETER EROSION BARRIER

PLAN

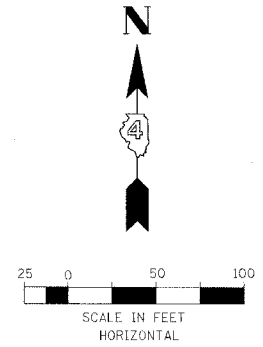
DESIGNED BY	DATE
PLOTTED BY	
NOTICE BOOK NO.	
FILE NAME	

PROFILE

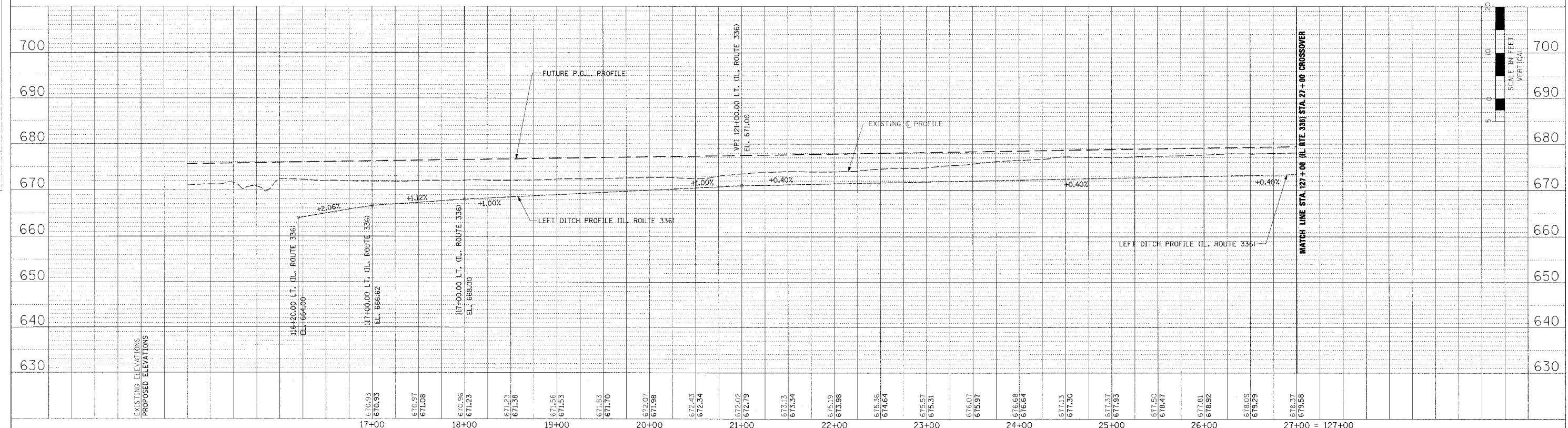
DESIGNED BY	DATE
PLOTTED BY	
NOTICE BOOK NO.	
STRUCTURE NUMBER	



MATCH LINE STA. 127+00 (IL. RTE. 336) STA. 27+00 CROSSOVER



NOTE: TEMPORARY DITCH CHECK SPACING WAS BASED ON SILT FENCE, USING 2.5' DEPTH



EROSION CONTROL PLAN AND PROFILE - IL. ROUTE 336 - STA. 116+98.59 TO STA. 127+00