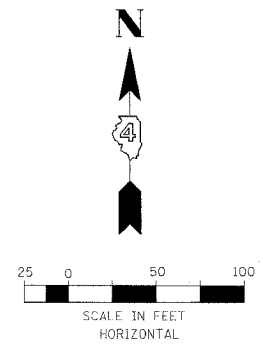
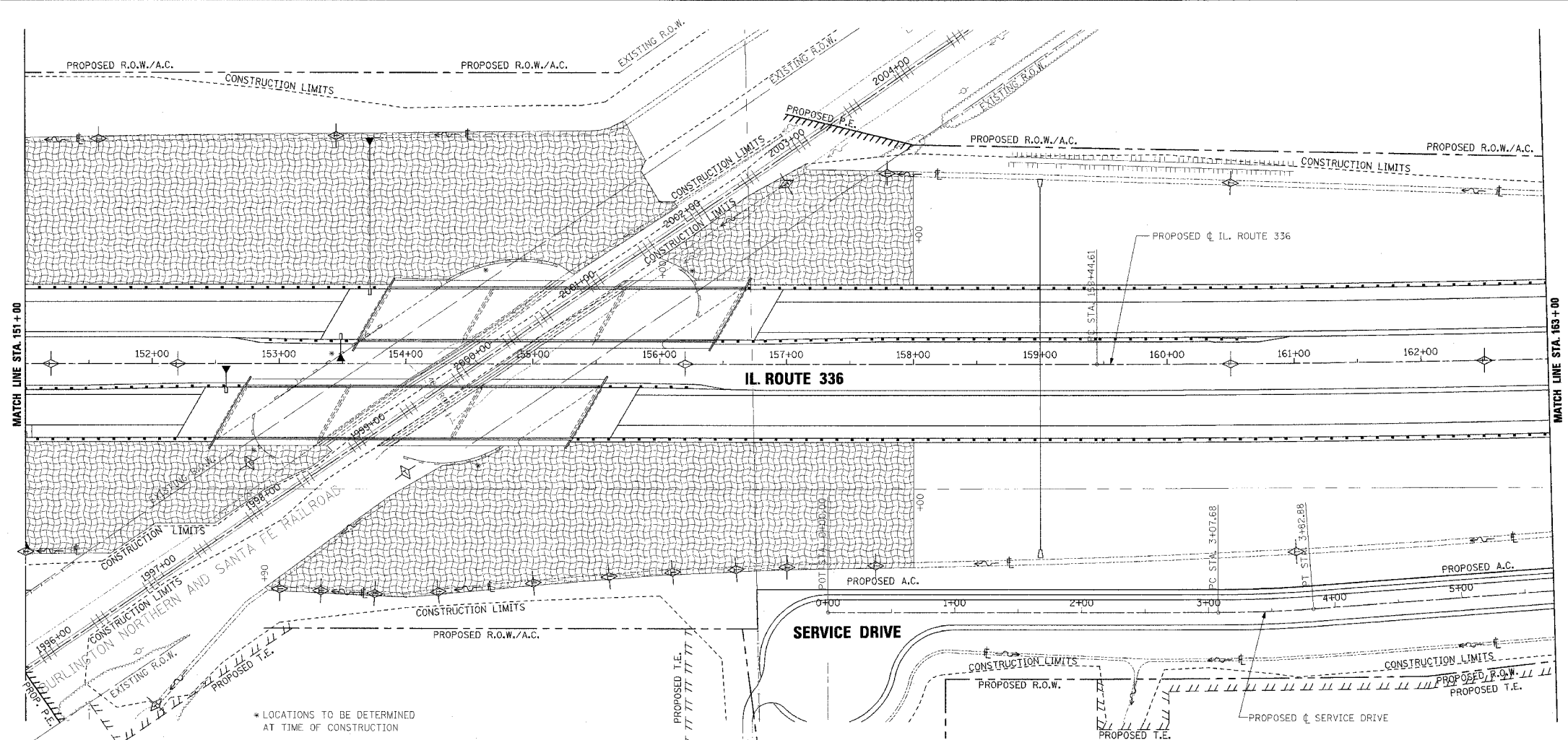


F.A.P. RTE.	SECTION	COUNTY	TOTAL SHEETS	SHEET NO.
315	55-2	McDONOUGH	1025	313
STA. 151+00		TO STA. 163+00		
FED. ROAD DIST. NO. 4 ILLINOIS' FED. AID PROJECT				

- TEMPORARY EROSION CONTROL LEGEND**
- TEMPORARY DITCH CHECK
 - INLET AND PIPE PROTECTION
 - EROSION CONTROL BLANKET
 - HEAVY DUTY EROSION CONTROL BLANKET
 - AGGREGATE DITCH (TO BE PLACED UPON COMPLETION OF DITCH CUT)
 - PERIMETER EROSION BARRIER



PLAN

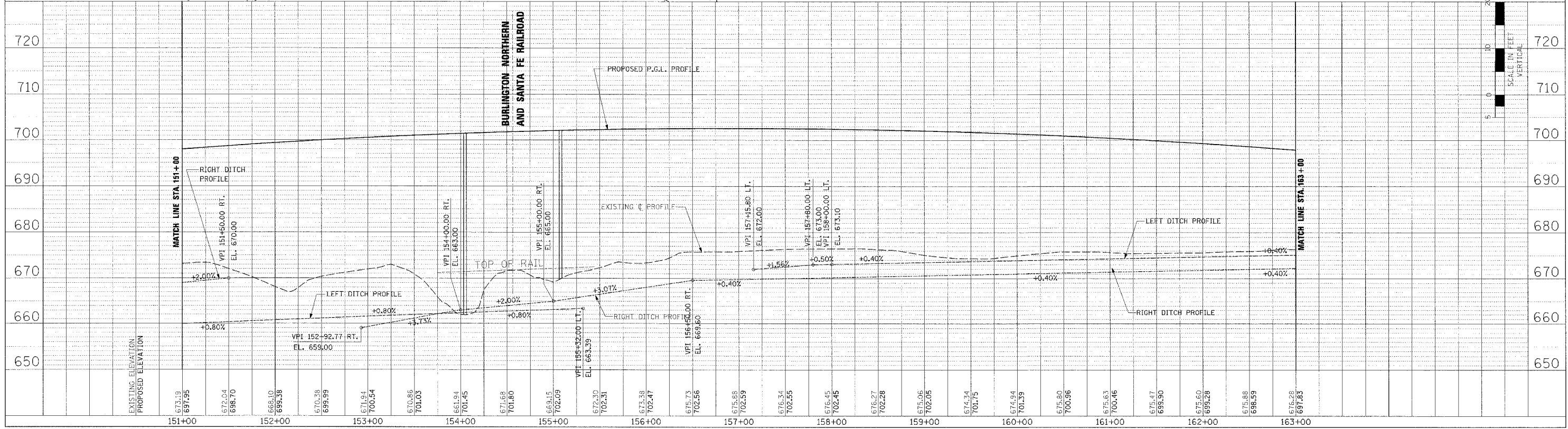
DATE	BY

NO. 1234567890
 NO. 1234567890
 NO. 1234567890
 NO. 1234567890

PROFILE

DATE	BY

NO. 1234567890
 NO. 1234567890
 NO. 1234567890
 NO. 1234567890



EROSION CONTROL PLAN AND PROFILE - IL. ROUTE 336 - STA. 151+00 TO STA. 163+00