

EROSION CONTROL BLANKET
 STA. 175+00, 99' LT. TO STA. 175+86, 129' LT.
 STA. 176+03, 134' LT. TO STA. 178+00, 81' LT.

TEMPORARY DITCH CHECKS

- STA. 175+25, 96' RT.
- STA. 175+86, 129' LT.
- STA. 176+03, 134' LT.
- STA. 177+00, 111' RT.
- STA. 178+00, 81' LT.
- STA. 180+00, 102' RT.
- STA. 182+00, 105' RT.
- STA. 182+50, 84' LT.
- STA. 182+72, 85' LT.
- STA. 186+00, 91' RT.

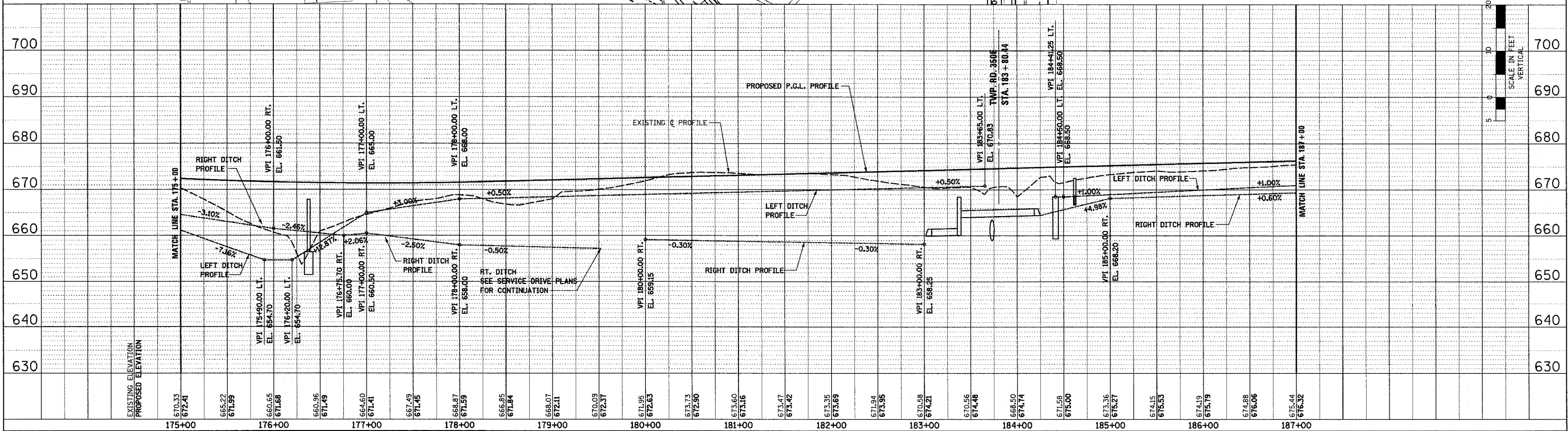
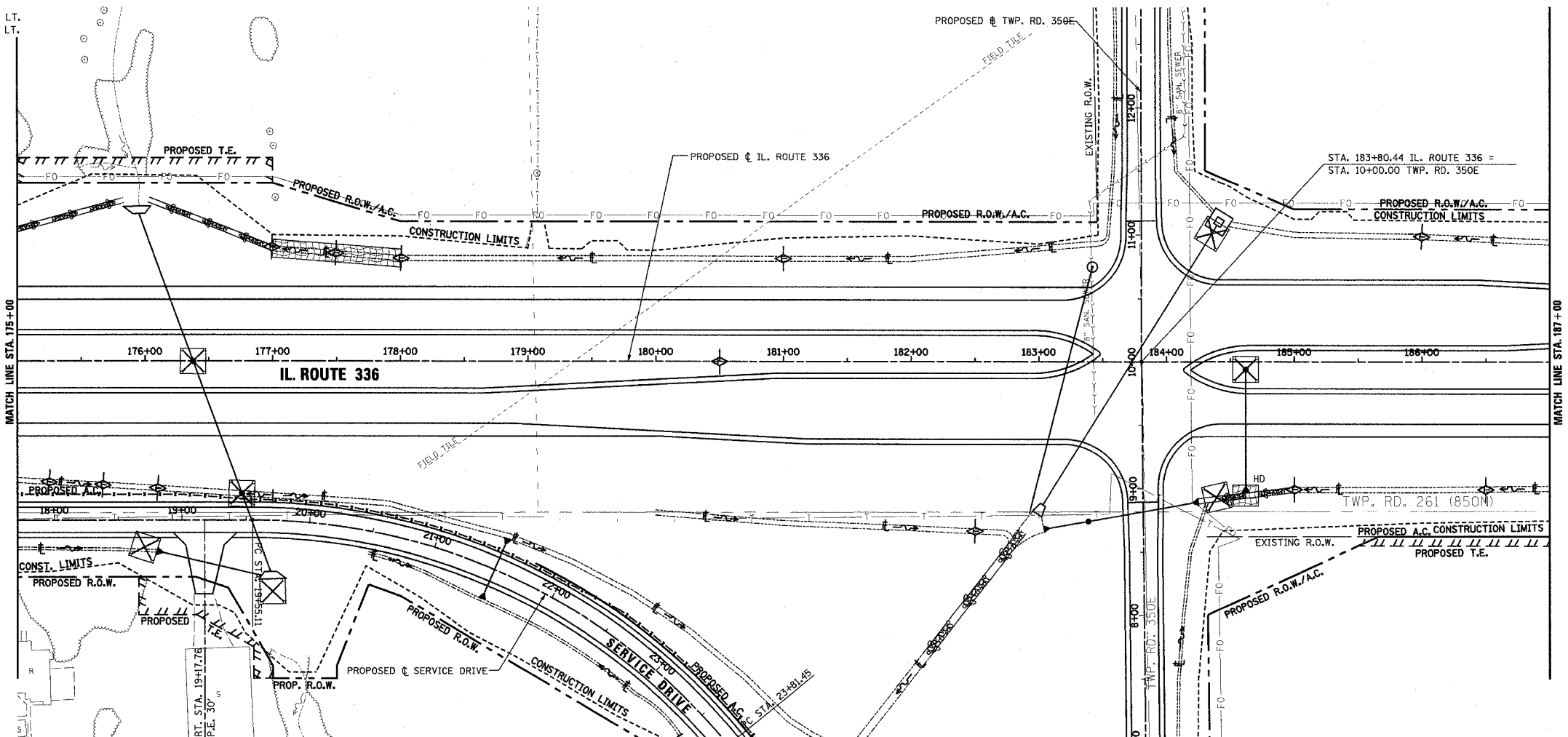
PERIMETER EROSION BARRIER

- STA. 184+29, 99' LT.
- STA. 184+40, 102' RT.

F.A.P. RTE.	SECTION	COUNTY	TOTAL SHEETS	SHEET NO.
315	55-2	McDONOUGH	1025	315
STA. 175+00		TO STA. 187+00		
FED. ROAD DIST. NO. 4 ILLINOIS FED. AID PROJECT				

TEMPORARY EROSION CONTROL LEGEND

- TEMPORARY DITCH CHECK
- INLET AND PIPE PROTECTION
- EROSION CONTROL BLANKET
- HEAVY DUTY EROSION CONTROL BLANKET
- AGGREGATE DITCH (TO BE PLACED UPON COMPLETION OF DITCH CUT)
- PERIMETER EROSION BARRIER



EROSION CONTROL PLAN AND PROFILE - IL. ROUTE 336 - STA. 175+00 TO STA. 187+00

DATE	BY	REVISION
		REVISED
		NOTED
		ALIGNED
		CHECKED
		CAD FILE NAME
		NO.

DATE	BY	REVISION
		REVISED
		NOTED
		ALIGNED
		CHECKED
		CAD FILE NAME
		NO.

3/20/05 4:17:20 PM E:\315\315.dwg