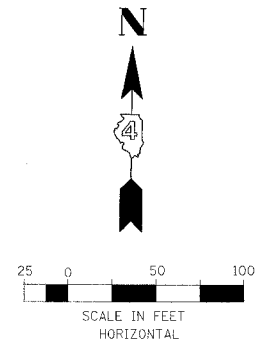
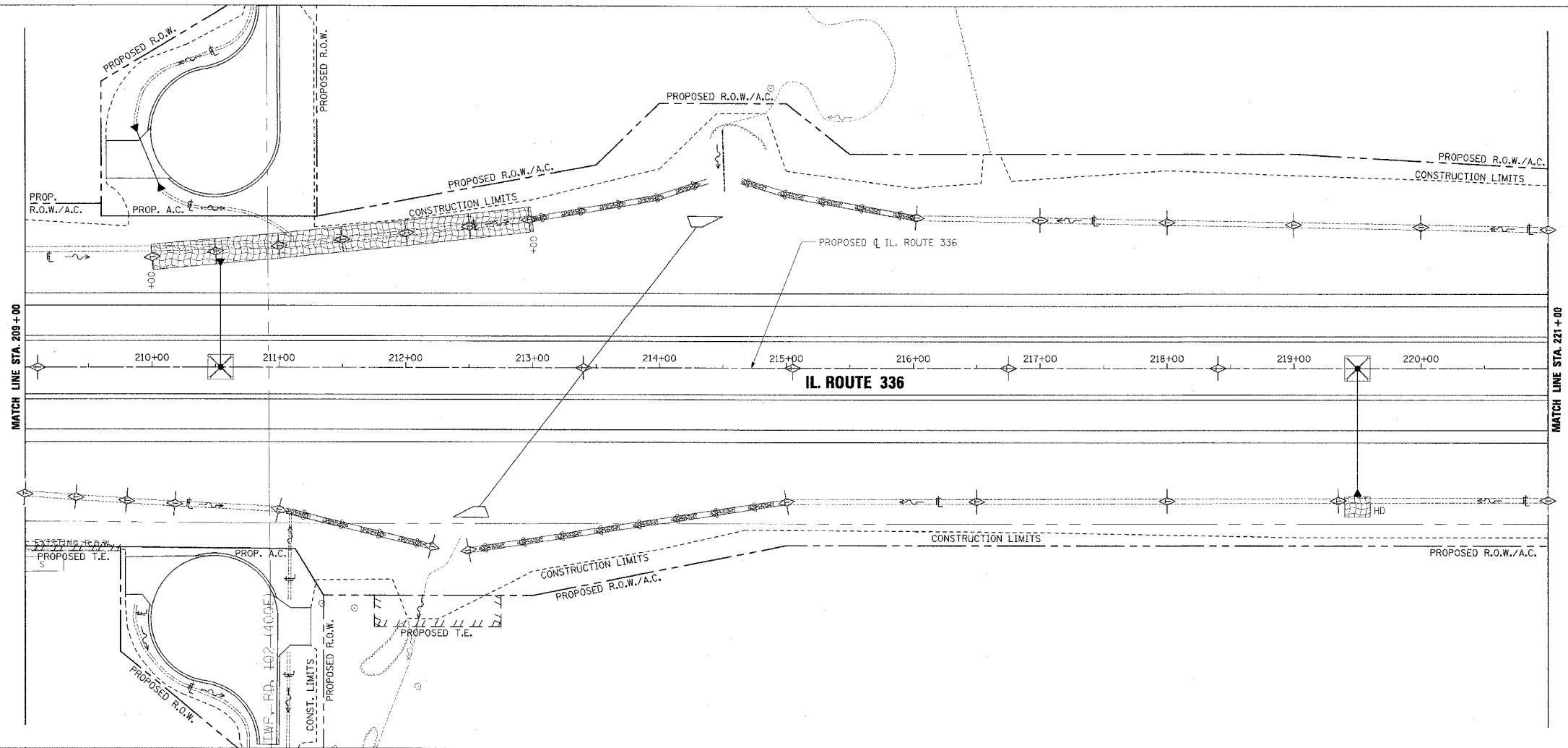


F.A.P. RTE.	SECTION	COUNTY	TOTAL SHEETS	SHEET NO.
315	55-2	McDONOUGH	1025	318
STA. 209+00		TO STA. 221+00		
FED. ROAD DIST. NO. 4		ILLINOIS FED. AID PROJECT		

- TEMPORARY EROSION CONTROL LEGEND
- TEMPORARY DITCH CHECK
 - INLET AND PIPE PROTECTION
 - EROSION CONTROL BLANKET
 - HEAVY DUTY EROSION CONTROL BLANKET
 - AGGREGATE DITCH (TO BE PLACED UPON COMPLETION OF DITCH CUT)
 - PERIMETER EROSION BARRIER

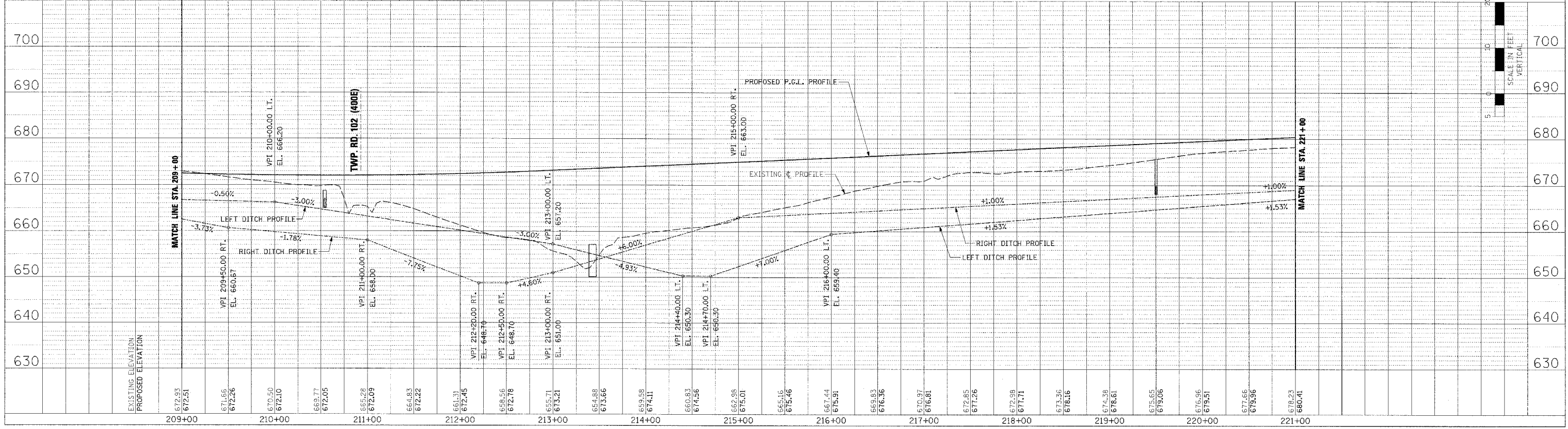


PLAN

DATE	BY

PROFILE

DATE	BY



EROSION CONTROL PLAN AND PROFILE - IL. ROUTE 336 - STA. 209+00 TO STA. 221+00