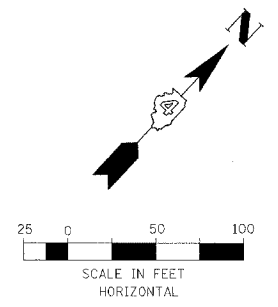
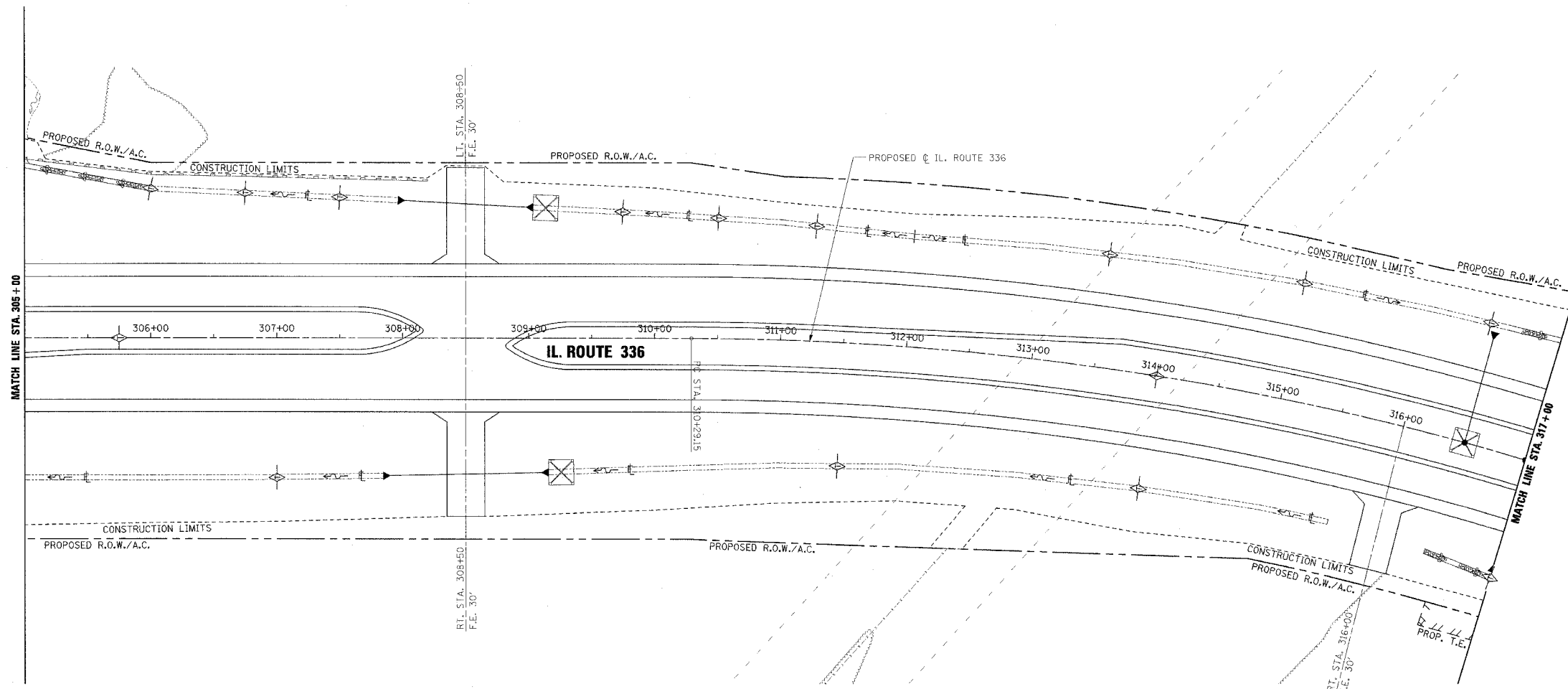


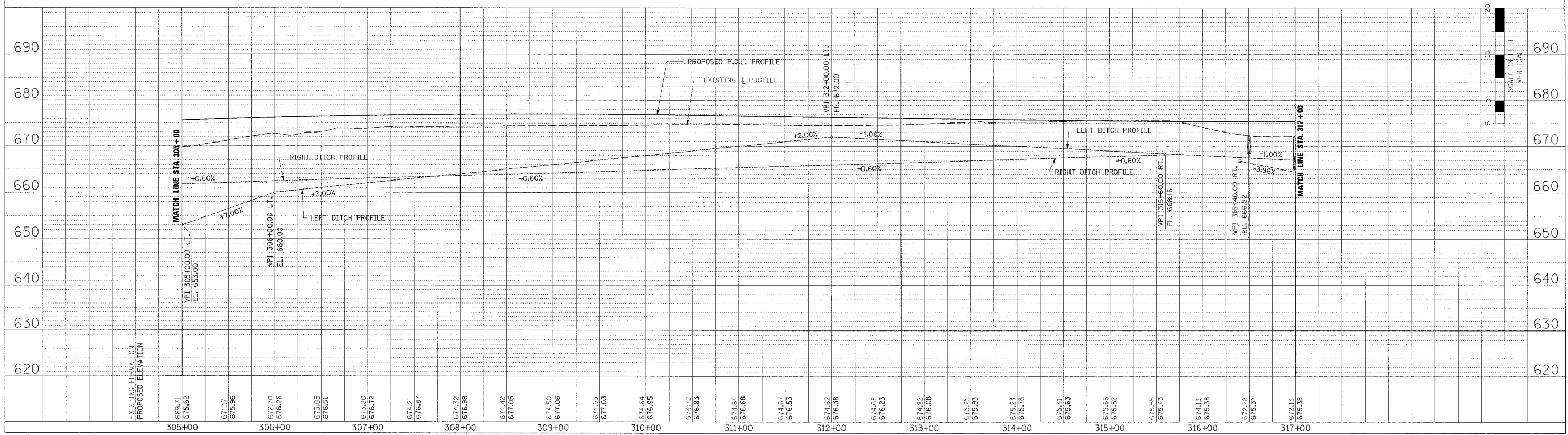
F.A.P. RTE.	SECTION	COUNTY	TOTAL SHEETS	SHEET NO.
315	55-2	McDONOUGH	1025	326
STA. 305+00		TO STA. 317+00		
FED. ROAD DIST. NO. 4 ILLINOIS FED. AID PROJECT				

- TEMPORARY EROSION CONTROL LEGEND
- TEMPORARY DITCH CHECK
 - INLET AND PIPE PROTECTION
 - EROSION CONTROL BLANKET
 - HEAVY DUTY EROSION CONTROL BLANKET
 - AGGREGATE DITCH (TO BE PLACED UPON COMPLETION OF DITCH CUT)
 - PERIMETER EROSION BARRIER



PLAN	DATE
BY	
REVISION	
NO. 1	DATE
NO. 2	DATE
NO. 3	DATE
NO. 4	DATE
NO. 5	DATE

PROFILE	DATE
BY	
REVISION	
NO. 1	DATE
NO. 2	DATE
NO. 3	DATE
NO. 4	DATE
NO. 5	DATE



EROSION CONTROL PLAN AND PROFILE - IL. ROUTE 336 - STA. 305+00 TO STA. 317+00