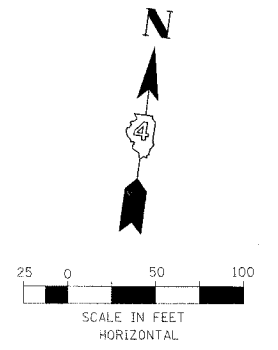


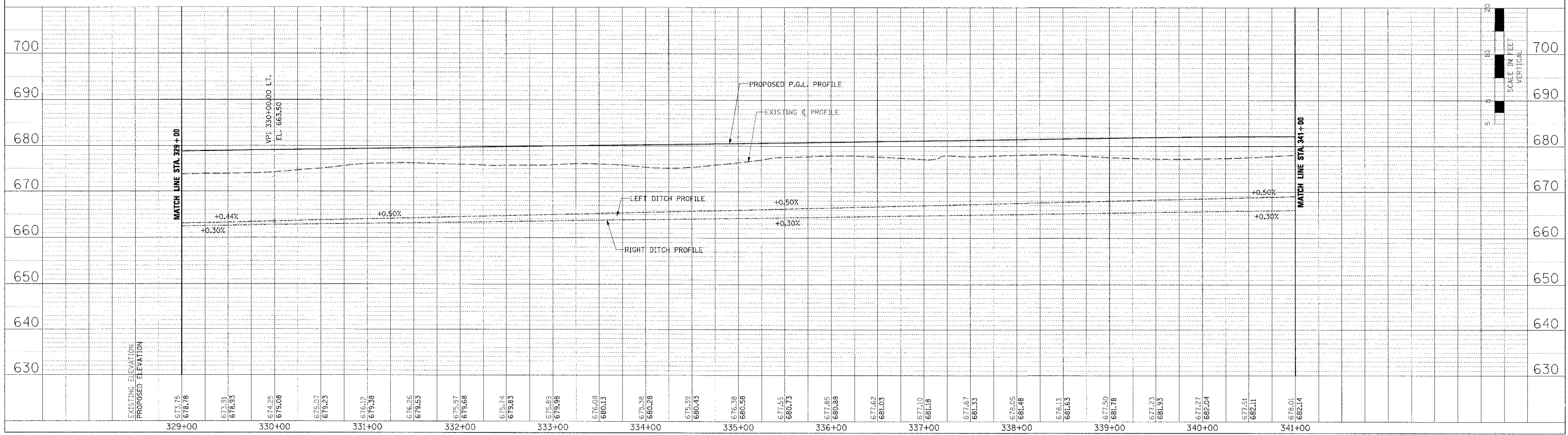
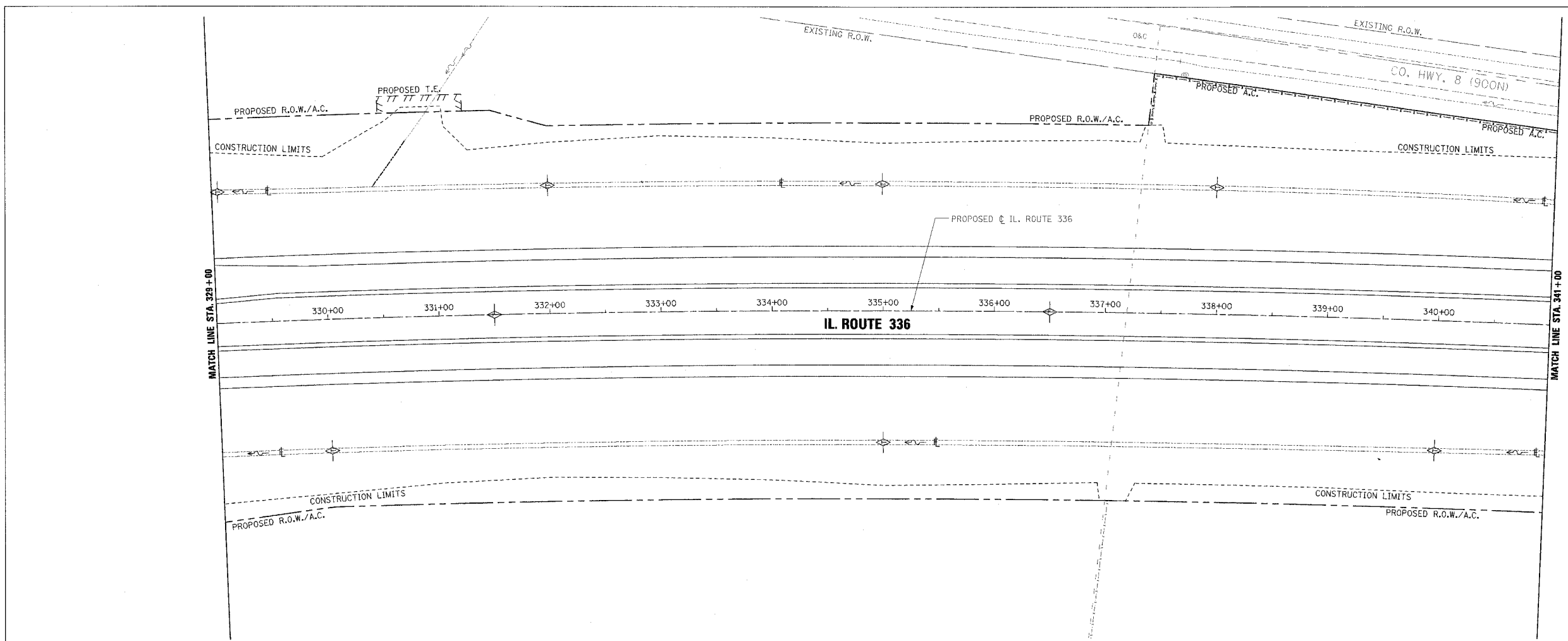
F.A.P. RTE.	SECTION	COUNTY	TOTAL SHEETS	SHEET NO.
315	55-2	McDONOUGH	1025	328
STA. 329+00		TO STA. 341+00		
FED. ROAD DIST. NO. 4 ILLINOIS FED. AID PROJECT				

- TEMPORARY EROSION CONTROL LEGEND
- TEMPORARY DITCH CHECK
 - INLET AND PIPE PROTECTION
 - EROSION CONTROL BLANKET
 - HEAVY DUTY EROSION CONTROL BLANKET
 - AGGREGATE DITCH (TO BE PLACED UPON COMPLETION OF DITCH CUT)
 - PERIMETER EROSION BARRIER



P.L. AN	DATE
DATE	BT
REVISIONS	
NO.	DESCRIPTION
1	AS SHOWN

PROFILE	DATE
DATE	BT
REVISIONS	
NO.	DESCRIPTION
1	AS SHOWN



EROSION CONTROL PLAN AND PROFILE - IL. ROUTE 336 - STA. 329+00 TO STA. 341+00