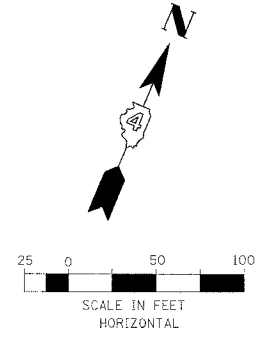
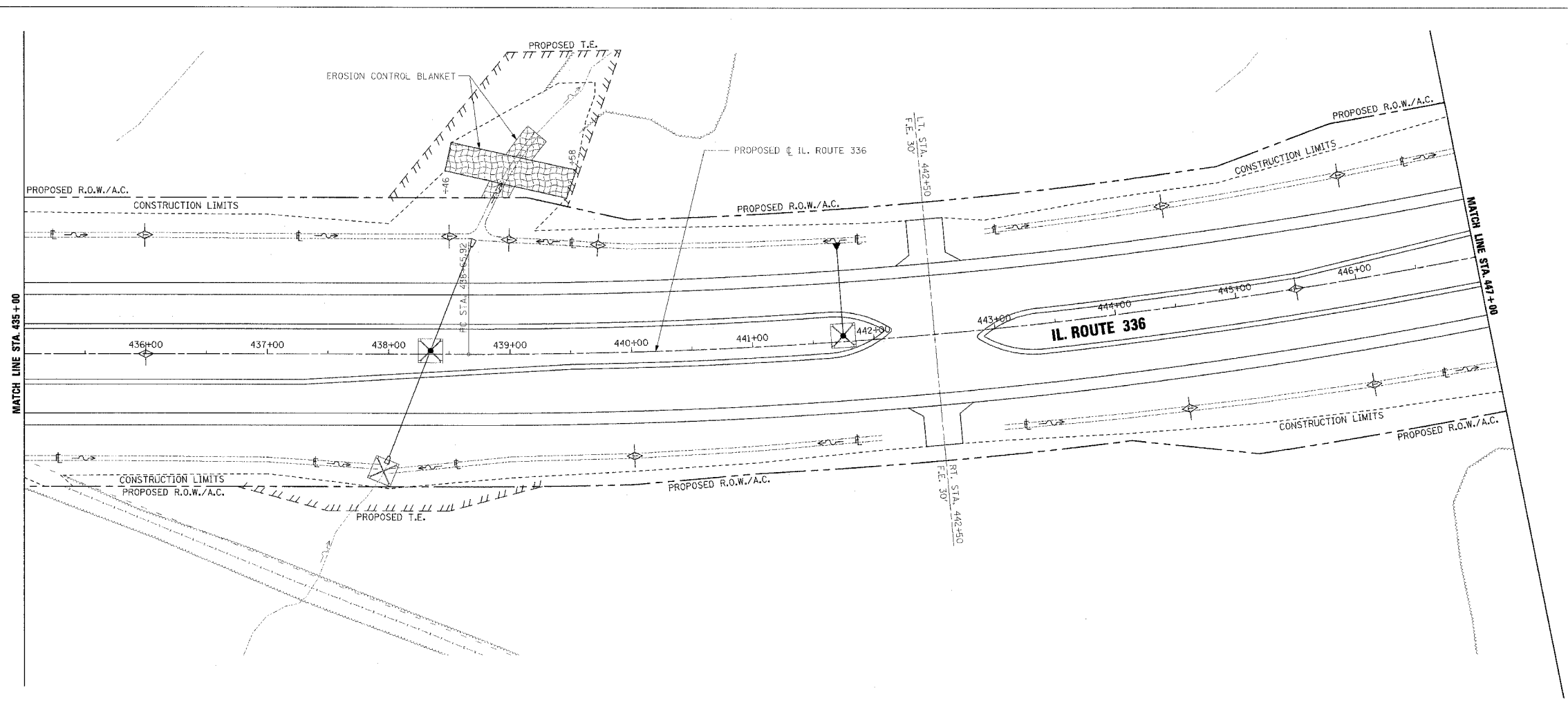


F.A.P. RTE.	SECTION	COUNTY	TOTAL SHEETS	SHEET NO.
315	55-2	McDONOUGH	1025	337
STA. 435+00		TO STA. 447+00		
FED. ROAD DIST. NO. 4 ILLINOIS FED. AID PROJECT				

- TEMPORARY EROSION CONTROL LEGEND**
- TEMPORARY DITCH CHECK
 - INLET AND PIPE PROTECTION
 - EROSION CONTROL BLANKET
 - HEAVY DUTY EROSION CONTROL BLANKET
 - AGGREGATE DITCH (TO BE PLACED UPON COMPLETION OF DITCH CUT)
 - PERIMETER EROSION BARRIER

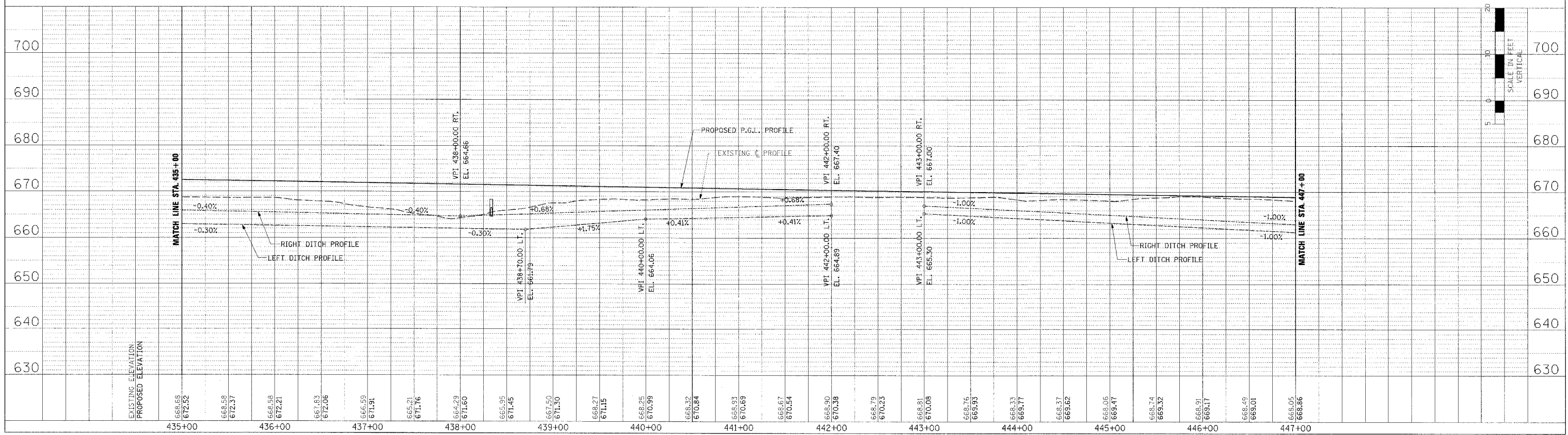


PLAN

DESIGNED BY	DATE
CHECKED BY	
IN CHARGE	
NO. OF SHEETS	
NO. OF THIS SHEET	
NO. OF THIS SHEET	
NO. OF THIS SHEET	

PROFILE

DESIGNED BY	DATE
CHECKED BY	
IN CHARGE	
NO. OF SHEETS	
NO. OF THIS SHEET	
NO. OF THIS SHEET	
NO. OF THIS SHEET	



EROSION CONTROL PLAN AND PROFILE - IL. ROUTE 336 - STA. 435+00 TO STA. 447+00