

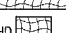
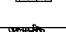


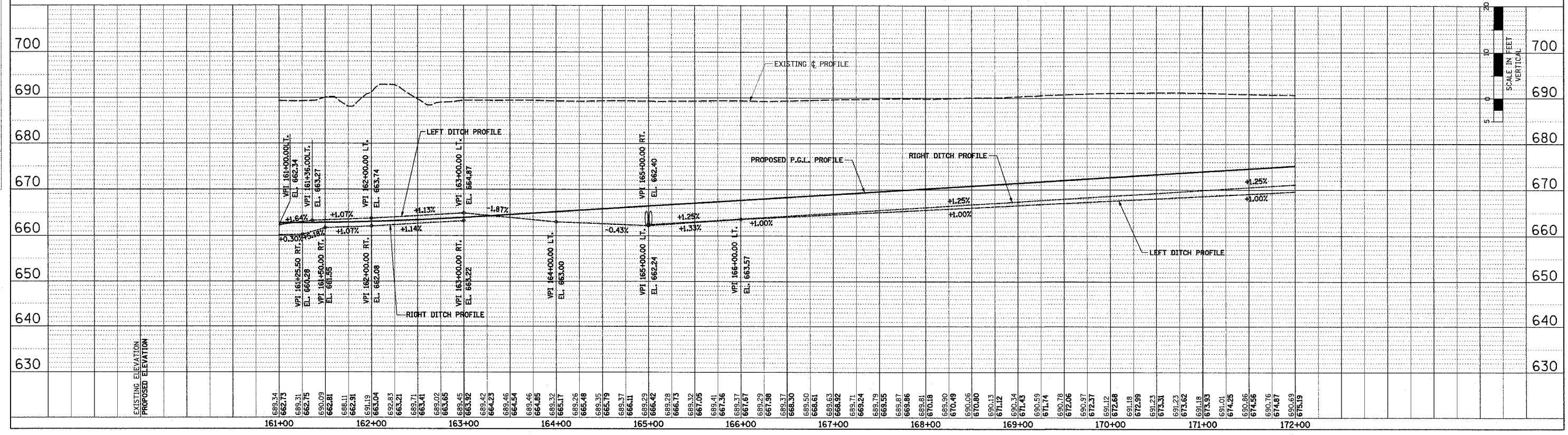
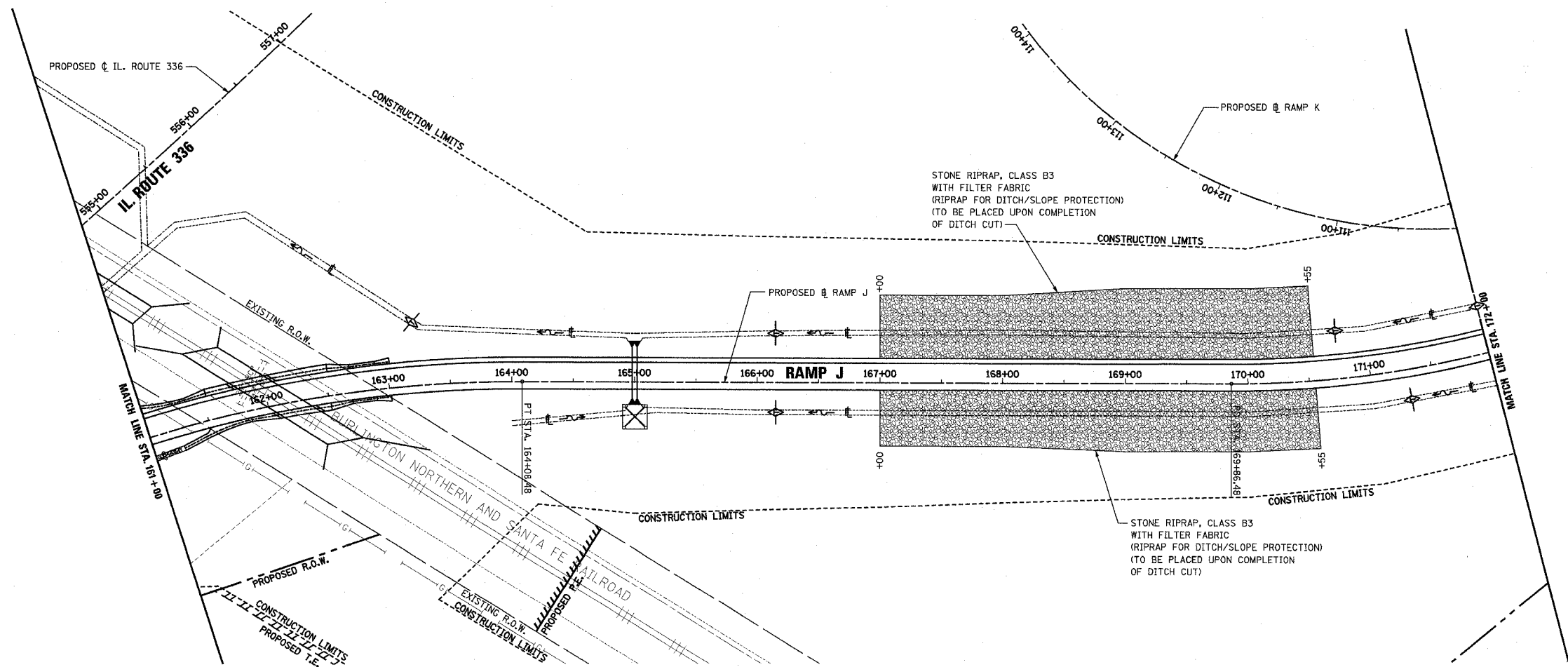
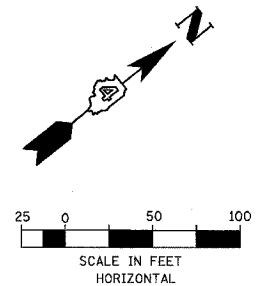


F.A.P. RTE.	SECTION	COUNTY	TOTAL SHEETS	SHEET NO.
315	55-2	McDONOUGH	1025	351
STA. 161+00		TO STA. 172+00		
FED. ROAD DIST. NO. 4 ILLINOIS FED. AID PROJECT				

- TEMPORARY EROSION CONTROL LEGEND**
-  TEMPORARY DITCH CHECK
 -  INLET AND PIPE PROTECTION
 -  EROSION CONTROL BLANKET
 -  HD EROSION CONTROL BLANKET
 -  AGGREGATE DITCH (TO BE PLACED UPON COMPLETION OF DITCH CUT)
 -  PERIMETER EROSION BARRIER



EROSION CONTROL PLAN AND PROFILE - RAMP J - STA. 161+00 TO STA. 172+00

PLAN

DATE	
BY	
REVIEWED	
DESIGNED	
CHECKED	
IN CHARGE	
NO. OF DAYS CHECKED	
NO. OF DAYS DRAWN	

PROFILE

DATE	
BY	
REVIEWED	
DESIGNED	
CHECKED	
IN CHARGE	
NO. OF DAYS CHECKED	
NO. OF DAYS DRAWN	

RAMP J - STA. 161+00 TO STA. 172+00