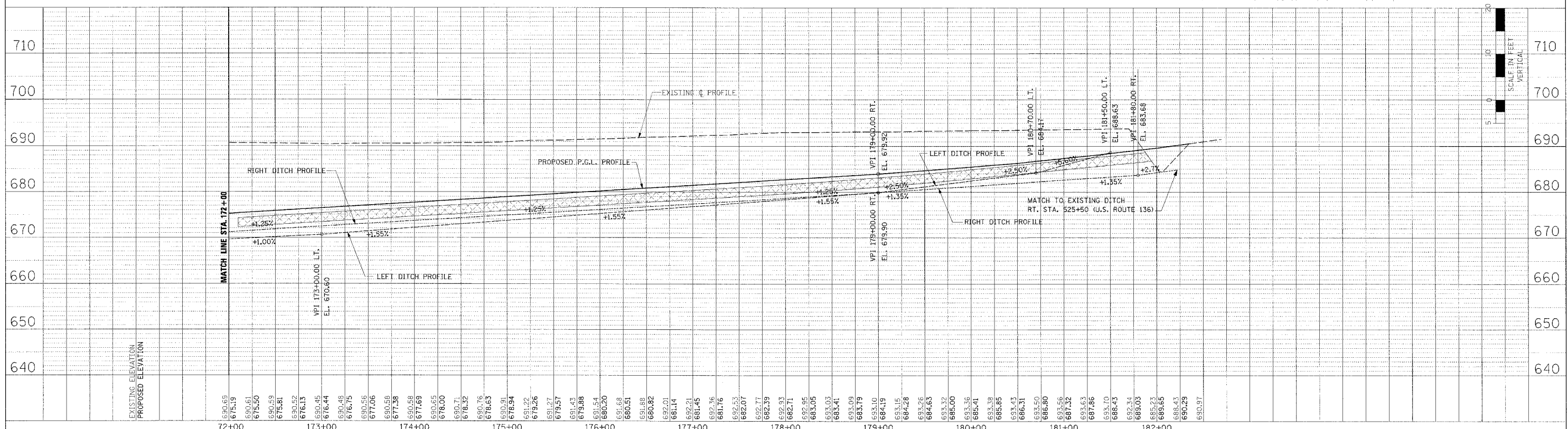
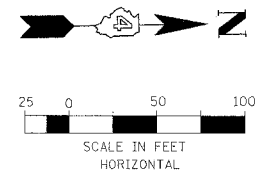
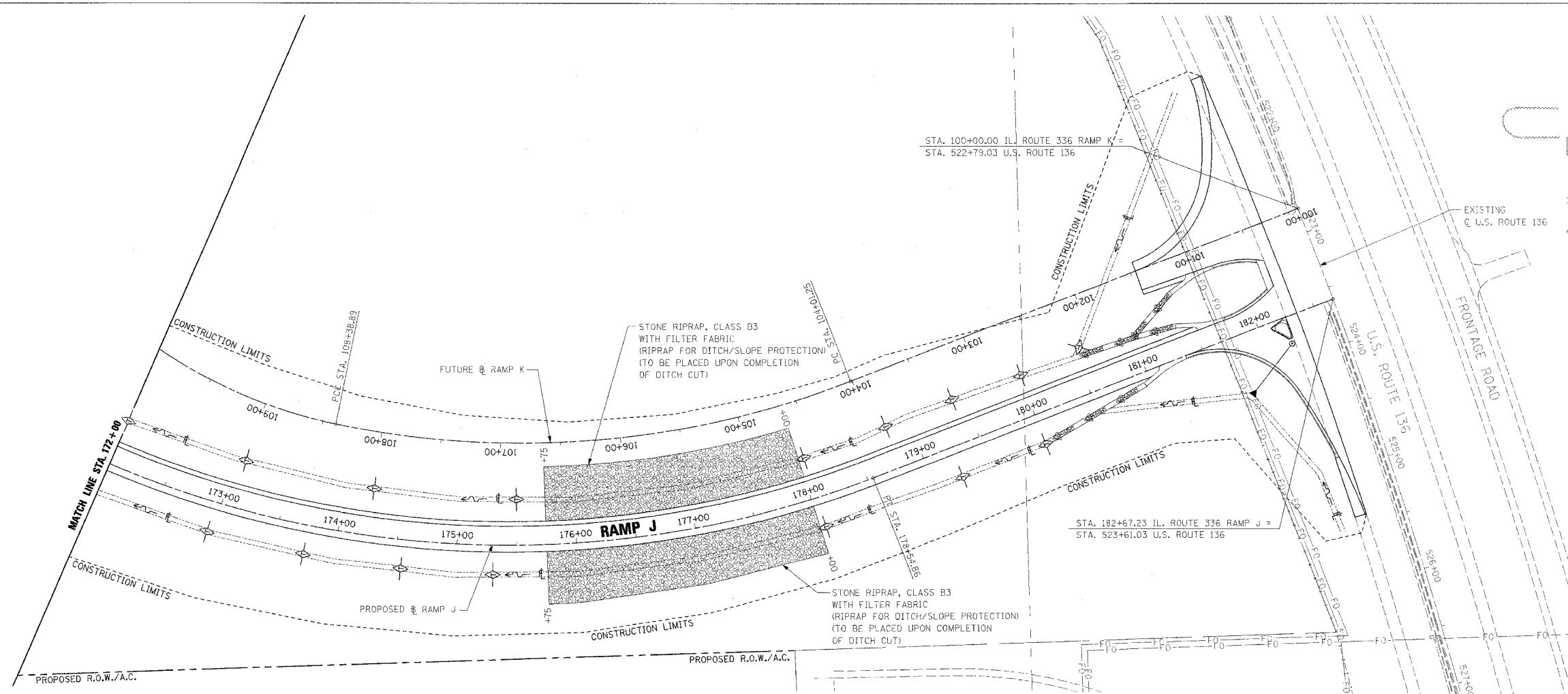


F.A.P. RTE.	SECTION	COUNTY	TOTAL SHEETS	SHEET NO.
315	55-2	McDONOUGH	1025	352
STA. 172+00		TO STA. 182+66.95		
FED. ROAD DIST. NO. 4 ILLINOIS		FED. AID PROJECT		

- TEMPORARY EROSION CONTROL LEGEND
- TEMPORARY DITCH CHECK
 - INLET AND PIPE PROTECTION
 - EROSION CONTROL BLANKET
 - HEAVY DUTY EROSION CONTROL BLANKET
 - AGGREGATE DITCH (TO BE PLACED UPON COMPLETION OF DITCH CUT)
 - PERIMETER EROSION BARRIER



EROSION CONTROL PLAN AND PROFILE - RAMP J - STA. 172+00 TO STA. 182+66.95

PLAN	DATE
REVISED	
CHECKED	
DESIGNED	
NO. OF WAY CHECKED	
DATE OF WAY CHECKED	
PAID FILE NAME	

DATE	BY
PROJECT	
PROF. ILL.	
REVISIONS	
PLotted	
NOTE BOOK	
NO. OF WAY CHECKED	
DATE OF WAY CHECKED	
STRUCTURE INTAKES CHECKED	