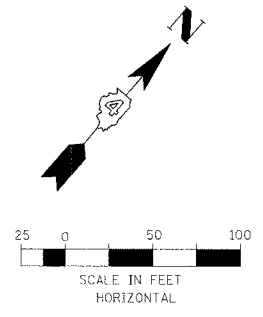
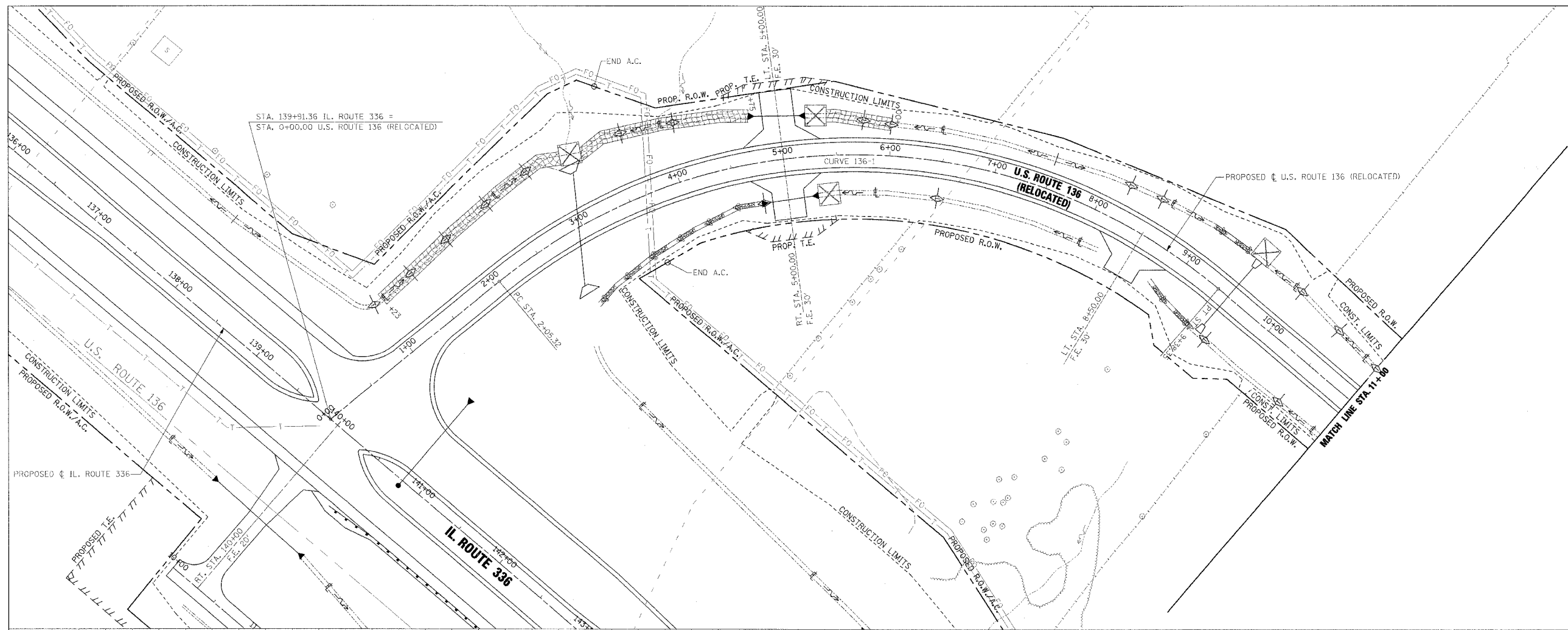


F.A.P. RTE.	SECTION	COUNTY	TOTAL SHEETS	SHEET NO.
315	55-2	McDONOUGH	1025	353
STA. 0+00		TO STA. 11+00		
FED. ROAD DIST. NO. 4 ILLINOIS FED. AID PROJECT				

- TEMPORARY EROSION CONTROL LEGEND
- TEMPORARY DITCH CHECK
  - INLET AND PIPE PROTECTION
  - EROSION CONTROL BLANKET
  - HEAVY DUTY EROSION CONTROL BLANKET
  - AGGREGATE DITCH (TO BE PLACED UPON COMPLETION OF DITCH CUT)
  - PERIMETER EROSION BARRIER

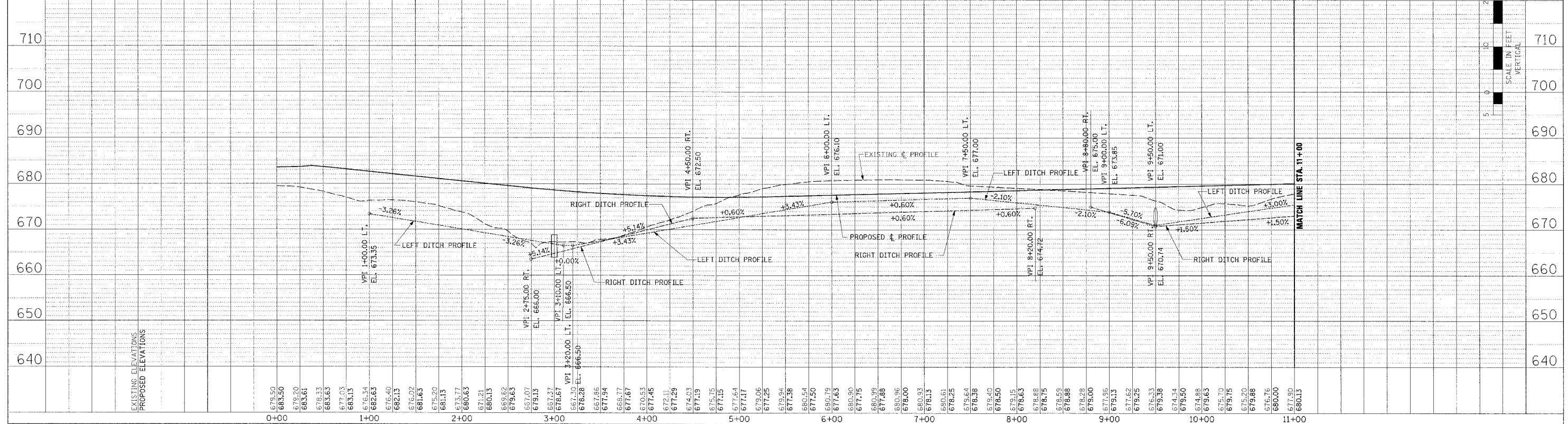


PLAN

DATE	BY

PROFILE

DATE	BY



EROSION CONTROL PLAN AND PROFILE - U.S. ROUTE 136 (RELOCATED) - STA. 0+00 TO STA. 11+00