

F.A.P. RTE.	SECTION	COUNTY	TOTAL SHEETS	SHEET NO.
315	55-2	McDONOUGH	1025	355
STA. 23+00		TO STA. 36+00		
FED. ROAD DIST. NO. 4 ILLINOIS FED. AID PROJECT				

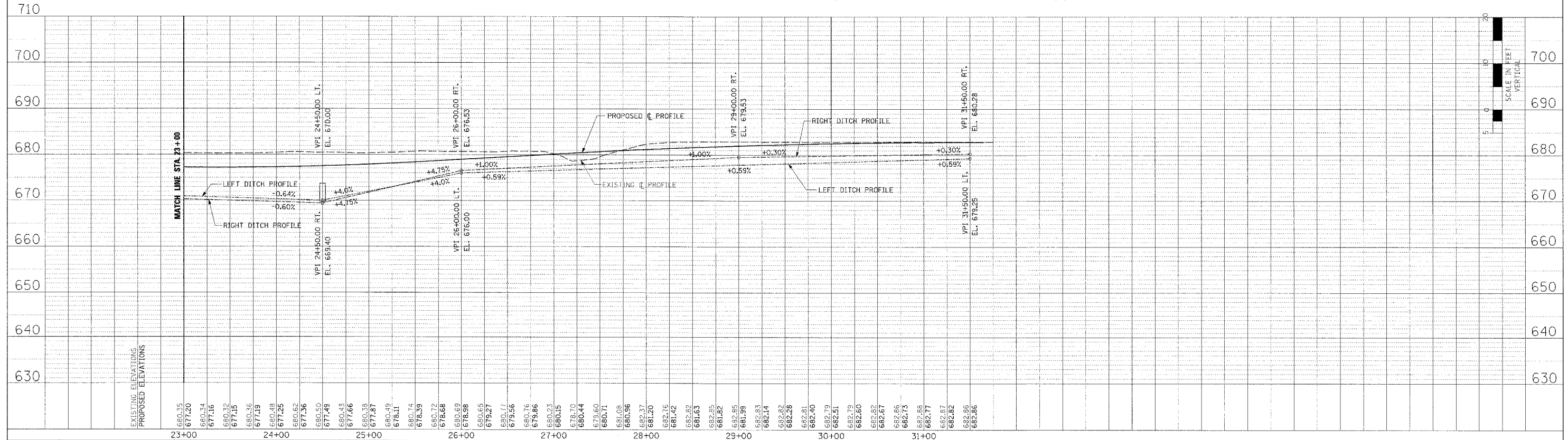
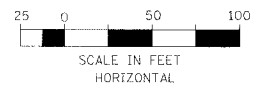
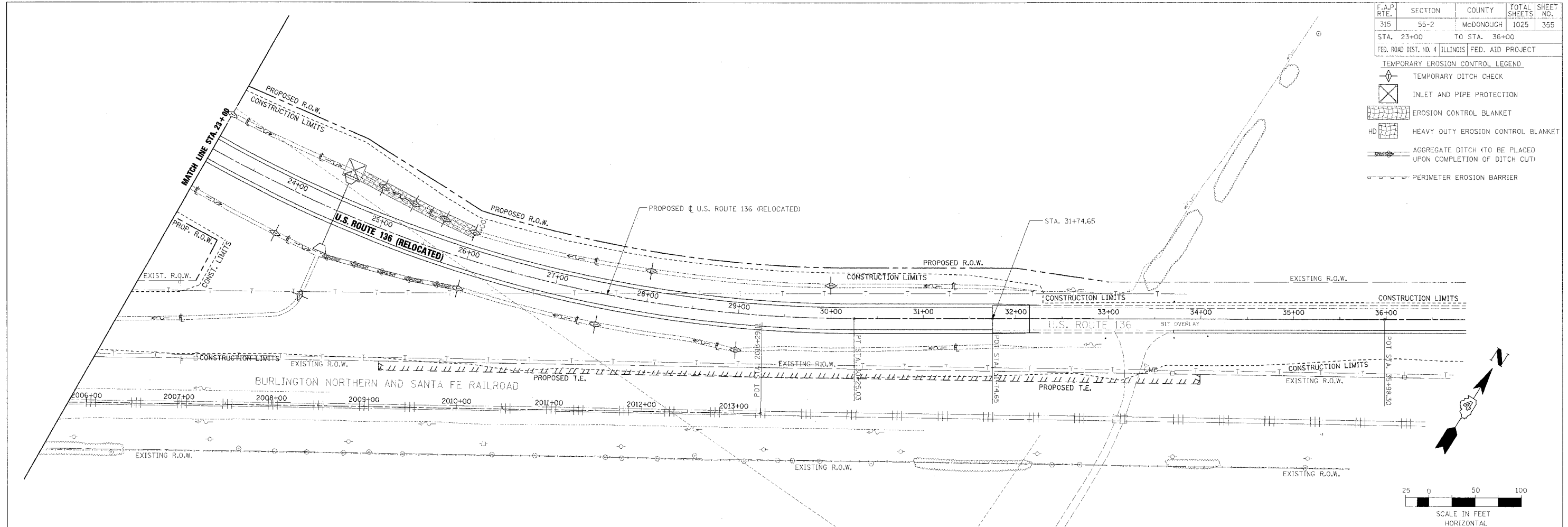
- TEMPORARY EROSION CONTROL LEGEND
- TEMPORARY DITCH CHECK
 - INLET AND PIPE PROTECTION
 - EROSION CONTROL BLANKET
 - HEAVY DUTY EROSION CONTROL BLANKET
 - AGGREGATE DITCH (TO BE PLACED UPON COMPLETION OF DITCH CUT)
 - PERIMETER EROSION BARRIER

PLAN

DESIGNED BY	DATE
CHECKED BY	
APPROVED BY	
PROJECT NO.	
DATE	

PROFILE

DESIGNED BY	DATE
CHECKED BY	
APPROVED BY	
PROJECT NO.	
DATE	



EROSION CONTROL PLAN AND PROFILE - U.S. ROUTE 136 (RELOCATED) - STA. 23+00 TO STA. 36+00