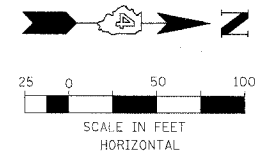
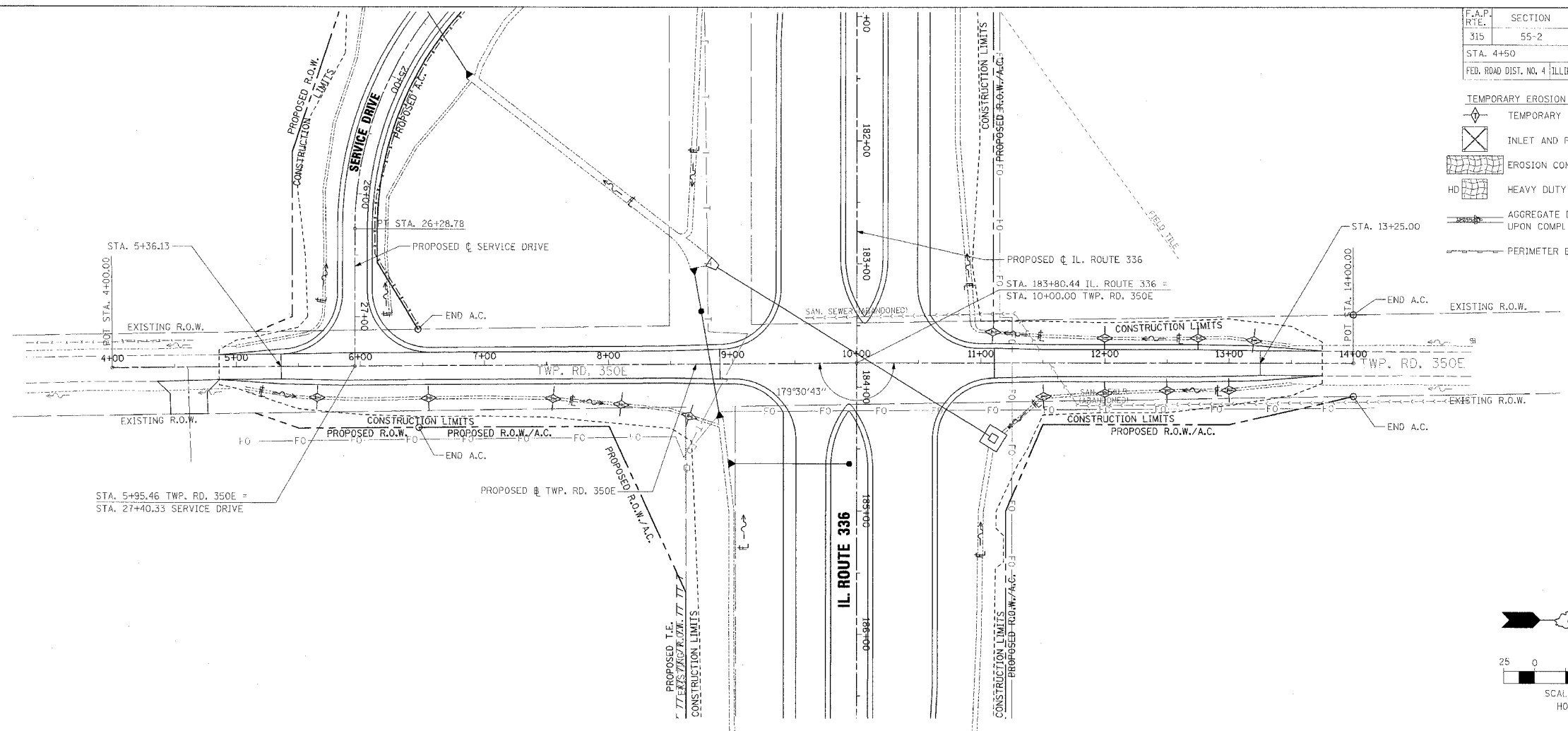


F.A.P. RTE.	SECTION	COUNTY	TOTAL SHEETS	SHEET NO.
315	55-2	MCDONOUGH	1025	359
STA. 4+50		TO STA. 14+00		
FED. ROAD DIST. NO. 4 ILLINOIS FED. AID PROJECT				

- TEMPORARY EROSION CONTROL LEGEND
- TEMPORARY DITCH CHECK
 - INLET AND PIPE PROTECTION
 - EROSION CONTROL BLANKET
 - HEAVY DUTY EROSION CONTROL BLANKET
 - AGGREGATE DITCH (TO BE PLACED UPON COMPLETION OF DITCH CUT)
 - PERIMETER EROSION BARRIER

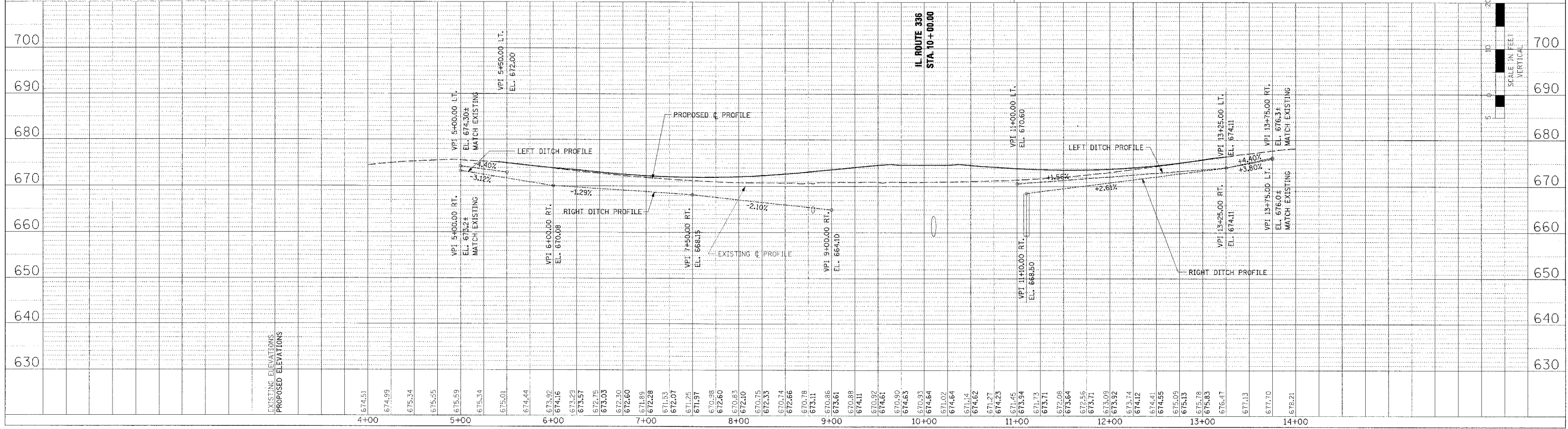


PLAN

DATE	BY
NO. 100K	NO. 100K
NO. 100K	NO. 100K
NO. 100K	NO. 100K

PROFILE

DATE	BY
NO. 100K	NO. 100K
NO. 100K	NO. 100K
NO. 100K	NO. 100K



EROSION CONTROL PLAN AND PROFILE - TWP. RD. 350E - STA. 4+50 TO STA. 14+00