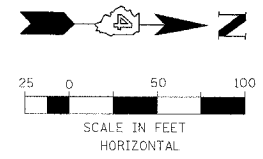
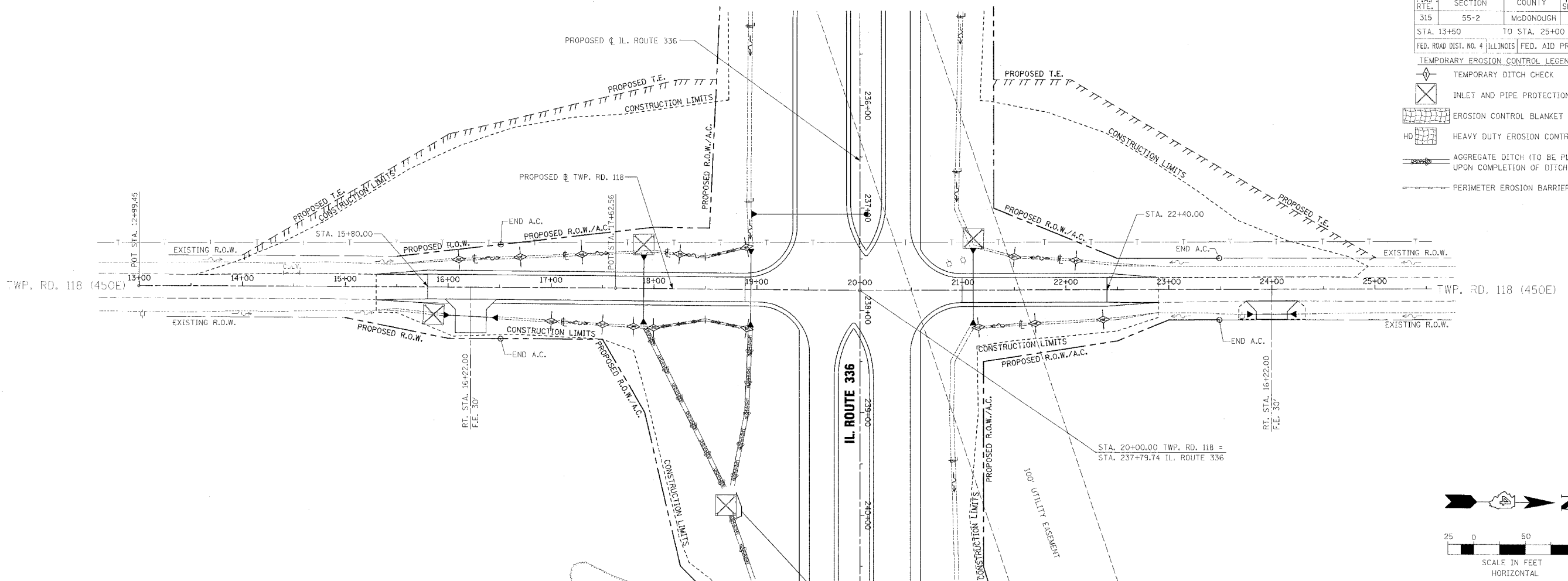


F.A.P. RT.E.	SECTION	COUNTY	TOTAL SHEETS	SHEET NO.
315	55-2	MCDONOUGH	1025	360
STA. 13+50		TO STA. 25+00		
FED. ROAD DIST. NO. 4 ILLINOIS FED. AID PROJECT				

- TEMPORARY EROSION CONTROL LEGEND
- TEMPORARY EROSION CONTROL CHECK
  - INLET AND PIPE PROTECTION
  - EROSION CONTROL BLANKET
  - HEAVY DUTY EROSION CONTROL BLANKET
  - AGGREGATE DITCH (TO BE PLACED UPON COMPLETION OF DITCH CUT)
  - PERIMETER EROSION BARRIER

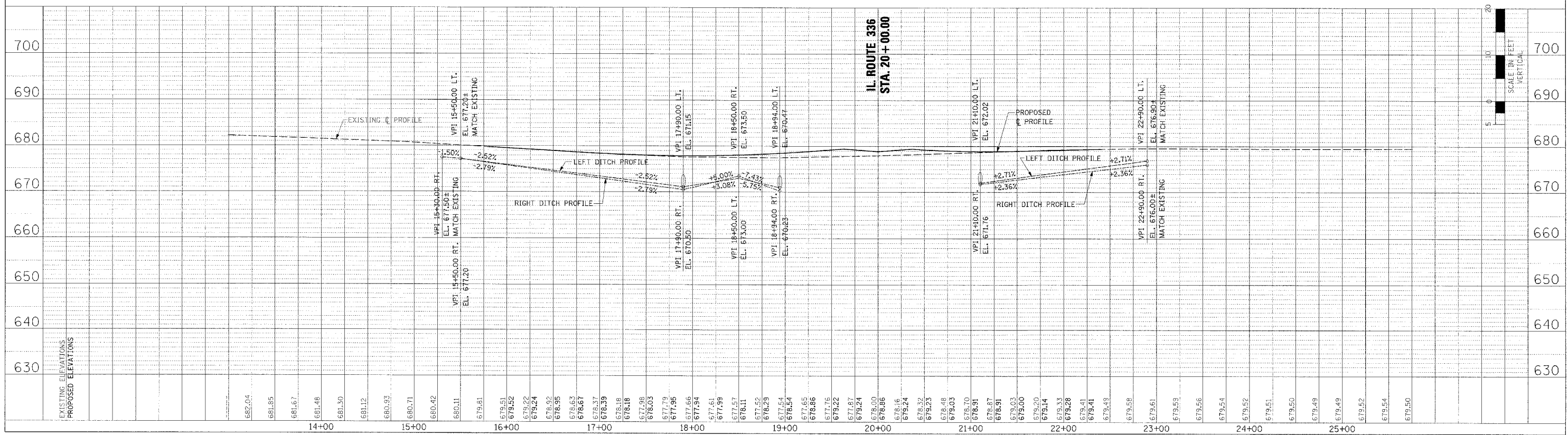


PLAN

DESIGNED	DATE
PLOTTED	BY
INLET WORK	
STRUCTURE WORK	
PAID FILE MARK	

PROFILE

DESIGNED	DATE
PLOTTED	BY
INLET WORK	
STRUCTURE WORK	
PAID FILE MARK	



EROSION CONTROL PLAN AND PROFILE - TWP. RD. 118 - STA. 13+50 TO STA. 25+00