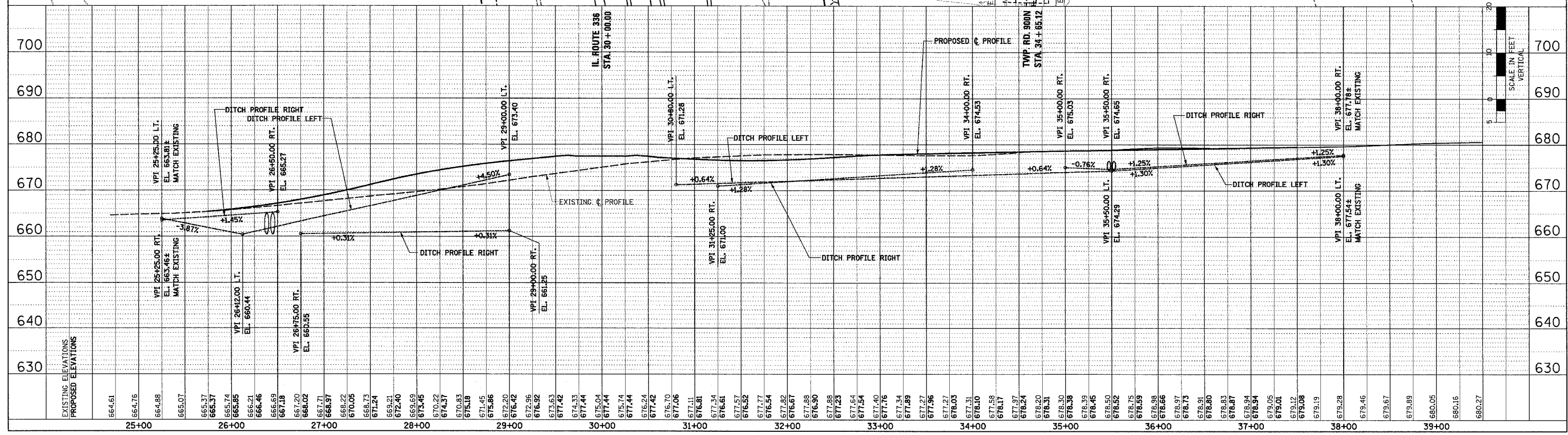
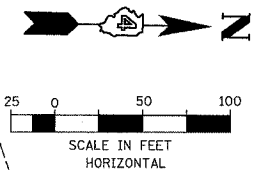
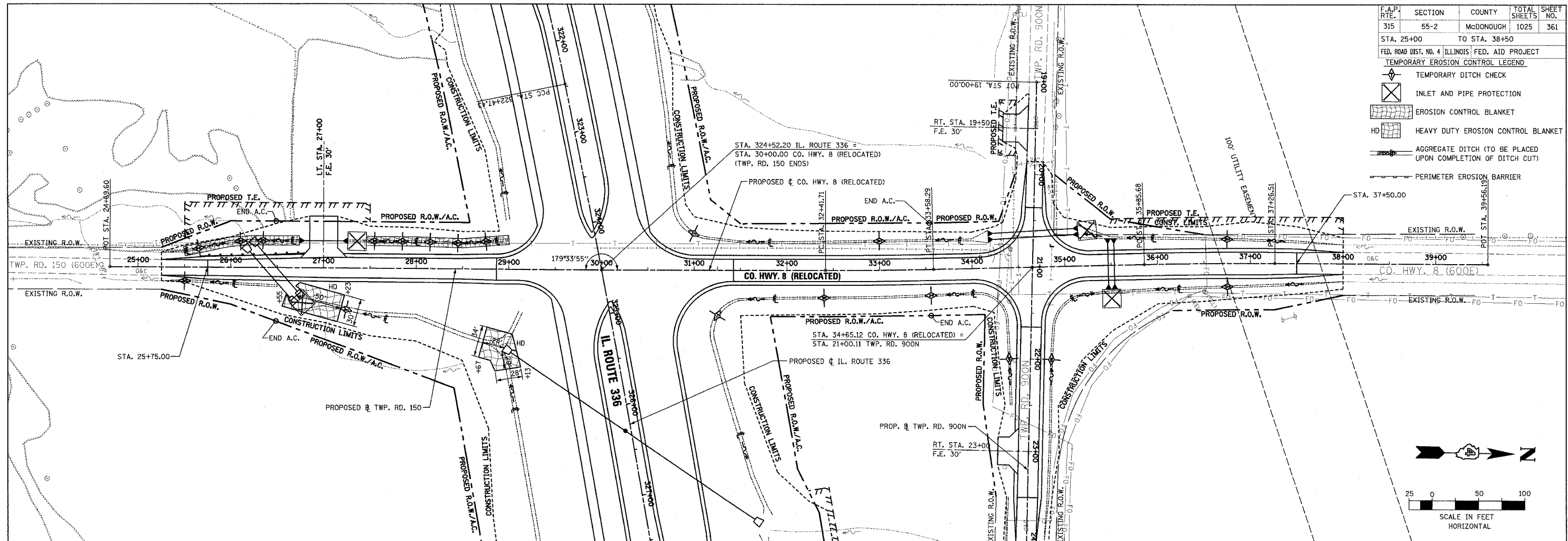


F.A.P. RTE.	SECTION	COUNTY	TOTAL SHEETS	SHEET NO.
315	55-2	McDONOUGH	1025	361

STA. 25+00 TO STA. 38+50
 FED. ROAD DIST. NO. 4 ILLINOIS FED. AID PROJECT

- TEMPORARY EROSION CONTROL LEGEND
- TEMPORARY DITCH CHECK
 - INLET AND PIPE PROTECTION
 - EROSION CONTROL BLANKET
 - HEAVY DUTY EROSION CONTROL BLANKET
 - AGGREGATE DITCH (TO BE PLACED UPON COMPLETION OF DITCH CUT)
 - PERIMETER EROSION BARRIER



EROSION CONTROL PLAN AND PROFILE - CO. HWY. 8 (RELOCATED)/TWP. RD. 150 - STA. 25+00 TO STA. 38+50

PLAN

DATE	BY

REVISIONS

NO.	DATE	DESCRIPTION

APPROVED

DATE	BY

PROFILE

DATE	BY

REVISIONS

NO.	DATE	DESCRIPTION

APPROVED

DATE	BY