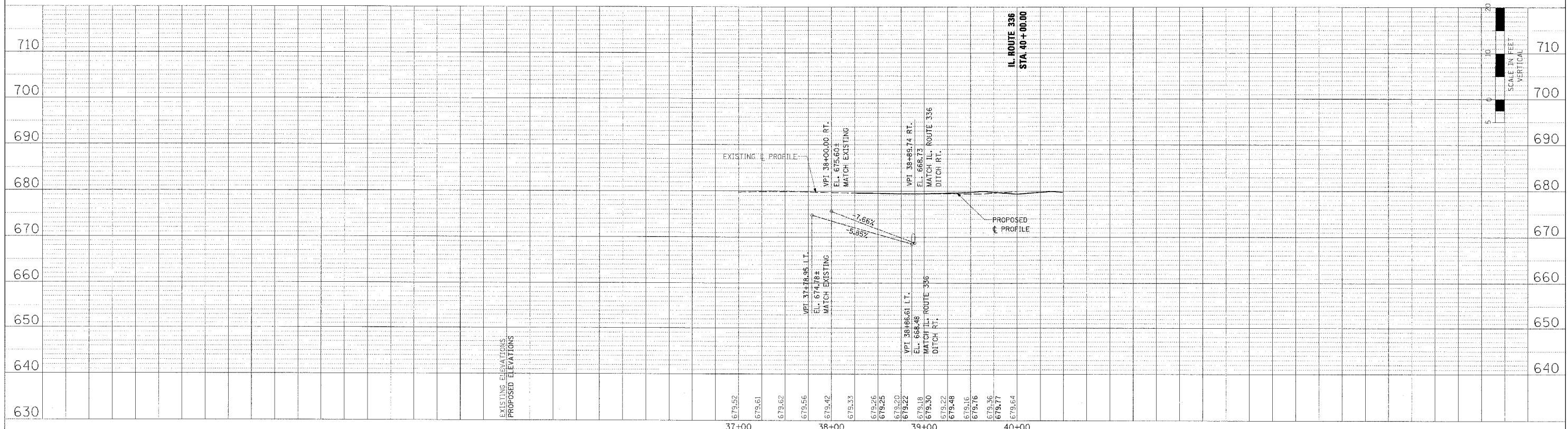
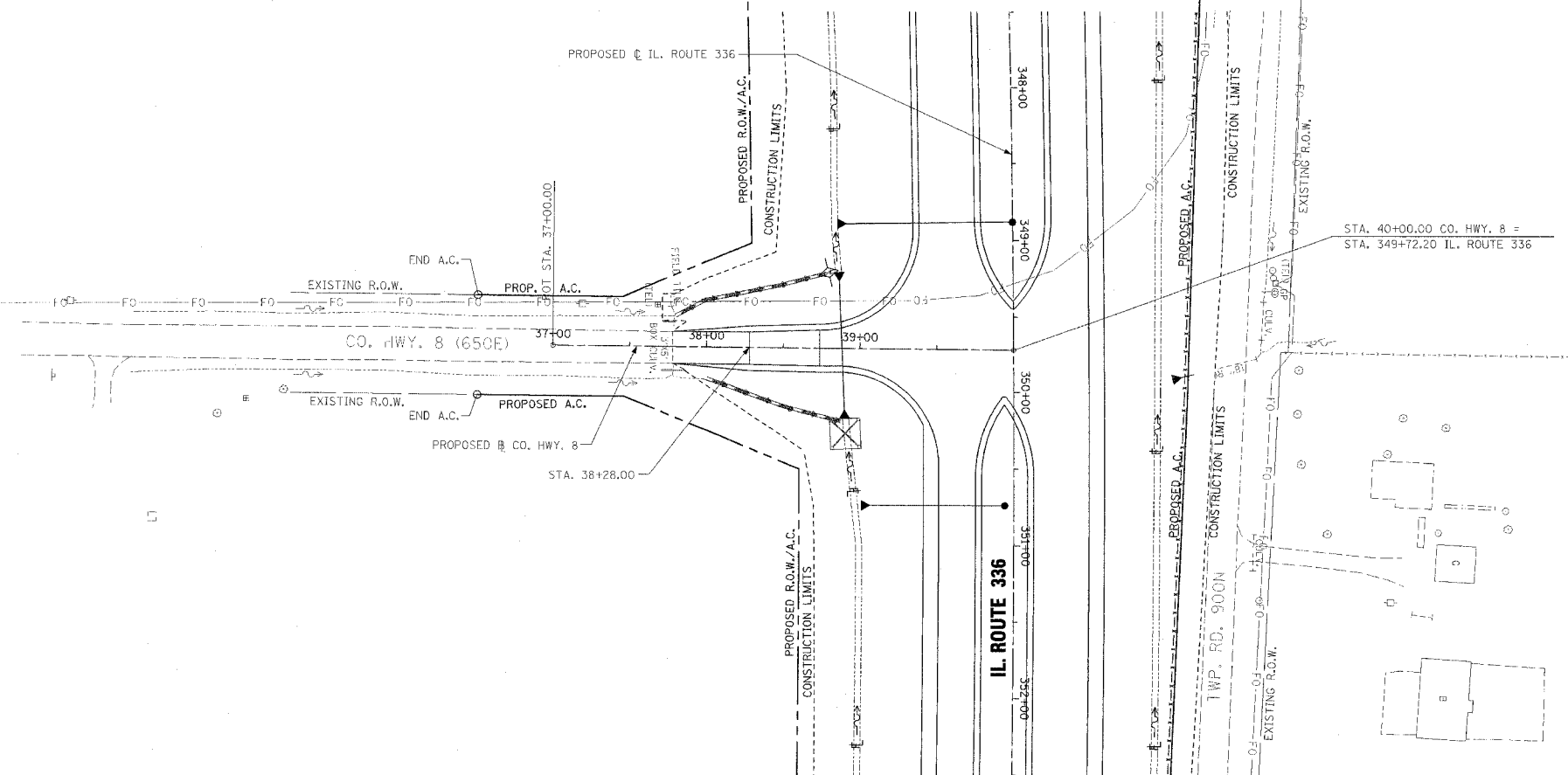


F.A.P. RTE.	SECTION	COUNTY	TOTAL SHEETS	SHEET NO.
315	55-2	McDONOUGH	1025	362
STA. 37+00		TO STA. 40+00		
FED. ROAD DIST. NO. 4 ILLINOIS FED. AID PROJECT				

- TEMPORARY EROSION CONTROL LEGEND
- TEMPORARY DITCH CHECK
 - INLET AND PIPE PROTECTION
 - EROSION CONTROL BLANKET
 - HEAVY DUTY EROSION CONTROL BLANKET
 - AGGREGATE DITCH (TO BE PLACED UPON COMPLETION OF DITCH CUT)
 - PERIMETER EROSION BARRIER



EROSION CONTROL PLAN AND PROFILE - CO. HWY. 8 (EAST) - STA. 37+00 TO STA. 40+00

PLAN

DESIGNED	BY	DATE
PLOTTED		
NOTE BOOK		
NO.		

NOTE: CHECKED BY: FILE NAME: NO.

PROFILE

DESIGNED	BY	DATE
PLOTTED		
NOTE BOOK		
NO.		

NOTE: CHECKED BY: FILE NAME: NO.