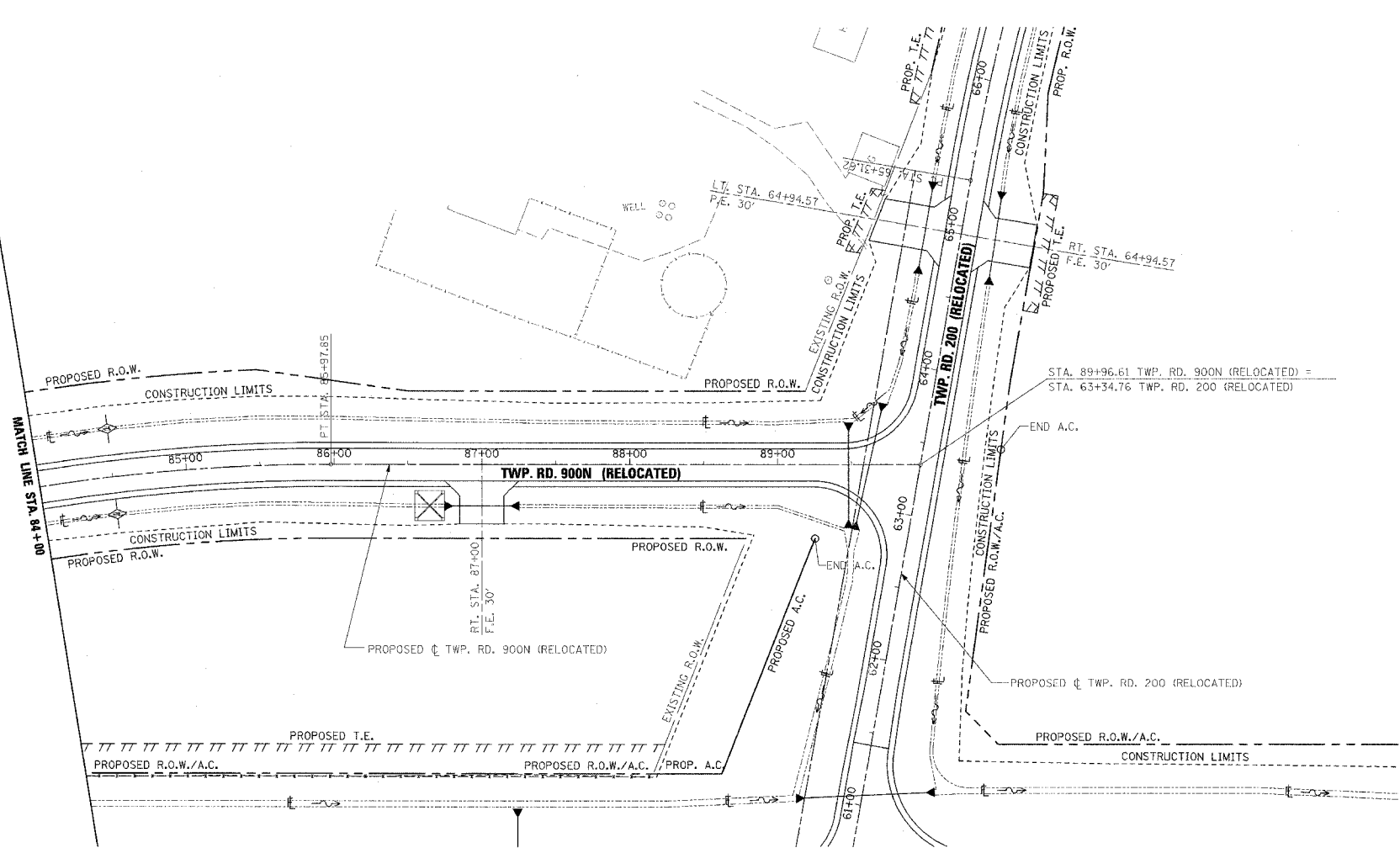


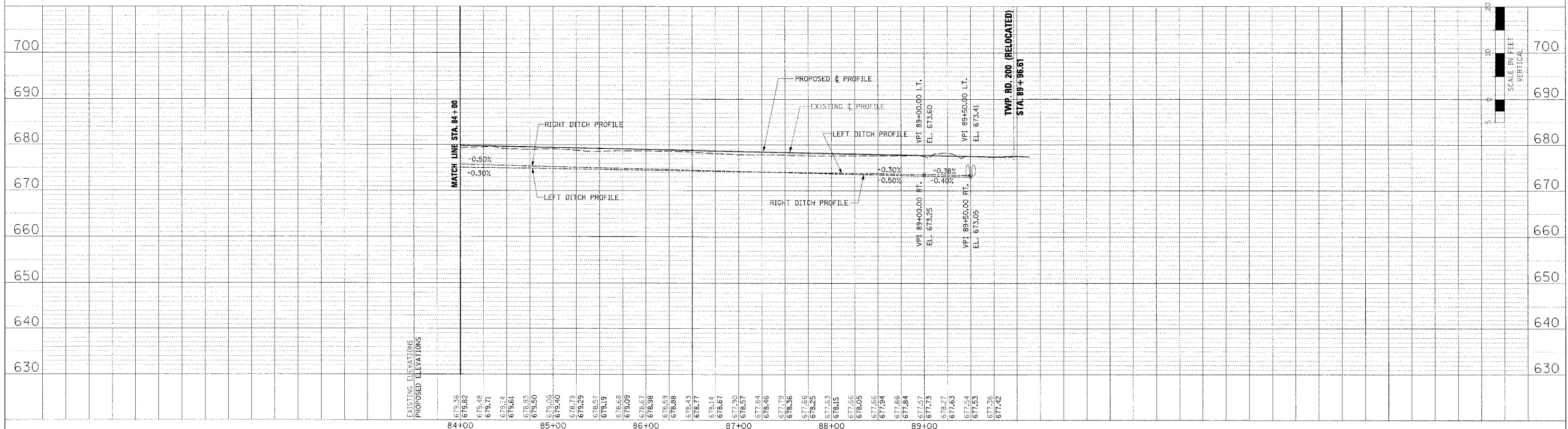
| F.A.P. RTE. | SECTION | COUNTY | TOTAL SHEETS | SHEET NO. |
|---|---------|------------------|--------------|-----------|
| 315 | 55-2 | MCDONOUGH | 1025 | 365 |
| STA. 84+00 | | TO STA. 89+96.61 | | |
| FED. ROAD DIST. NO. 4 ILLINOIS FED. AID PROJECT | | | | |

| TEMPORARY EROSION CONTROL LEGEND | |
|----------------------------------|---|
| | TEMPORARY DITCH CHECK |
| | INLET AND PIPE PROTECTION |
| | EROSION CONTROL BLANKET |
| | HEAVY DUTY EROSION CONTROL BLANKET |
| | AGGREGATE DITCH (TO BE PLACED UPON COMPLETION OF DITCH CUT) |
| | PERIMETER EROSION BARRIER |



| PLAN | SUPPLIER | DATE |
|----------|--------------------------|---------|
| NO. 1000 | PLotted by: [blank] | [blank] |
| NO. 1001 | Checked by: [blank] | [blank] |
| NO. 1002 | Drawn by: [blank] | [blank] |
| NO. 1003 | Field File Name: [blank] | [blank] |

| PROFILE | DATE |
|----------|---------|
| NO. 1000 | [blank] |
| NO. 1001 | [blank] |
| NO. 1002 | [blank] |
| NO. 1003 | [blank] |



EROSION CONTROL PLAN AND PROFILE - TWP. RD. 900N (RELOCATED) - STA. 84+00 TO STA. 89+96.61