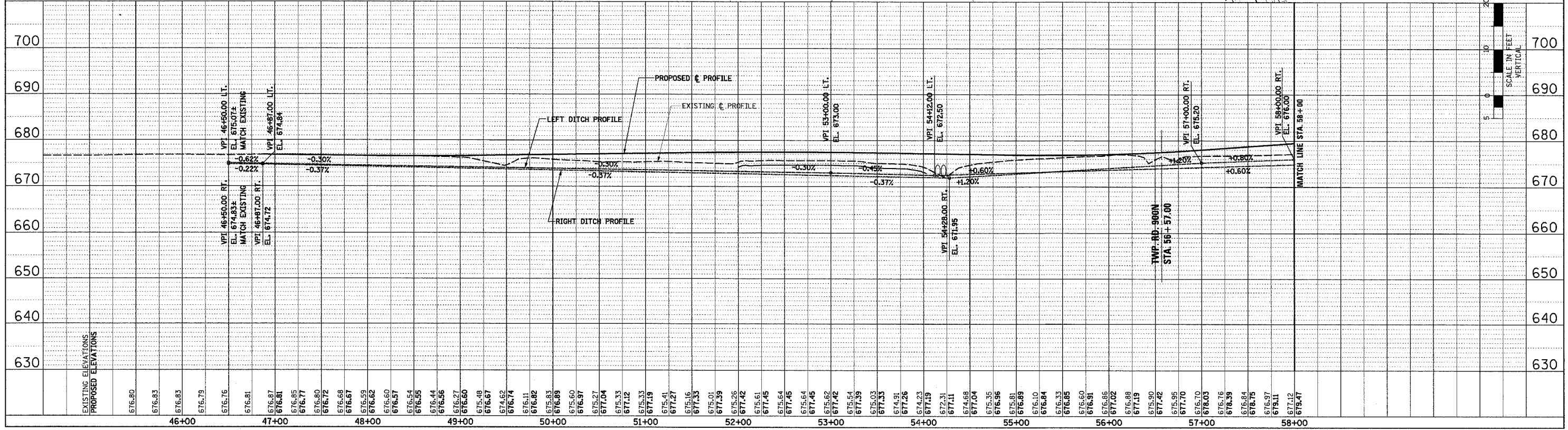
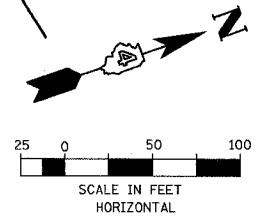
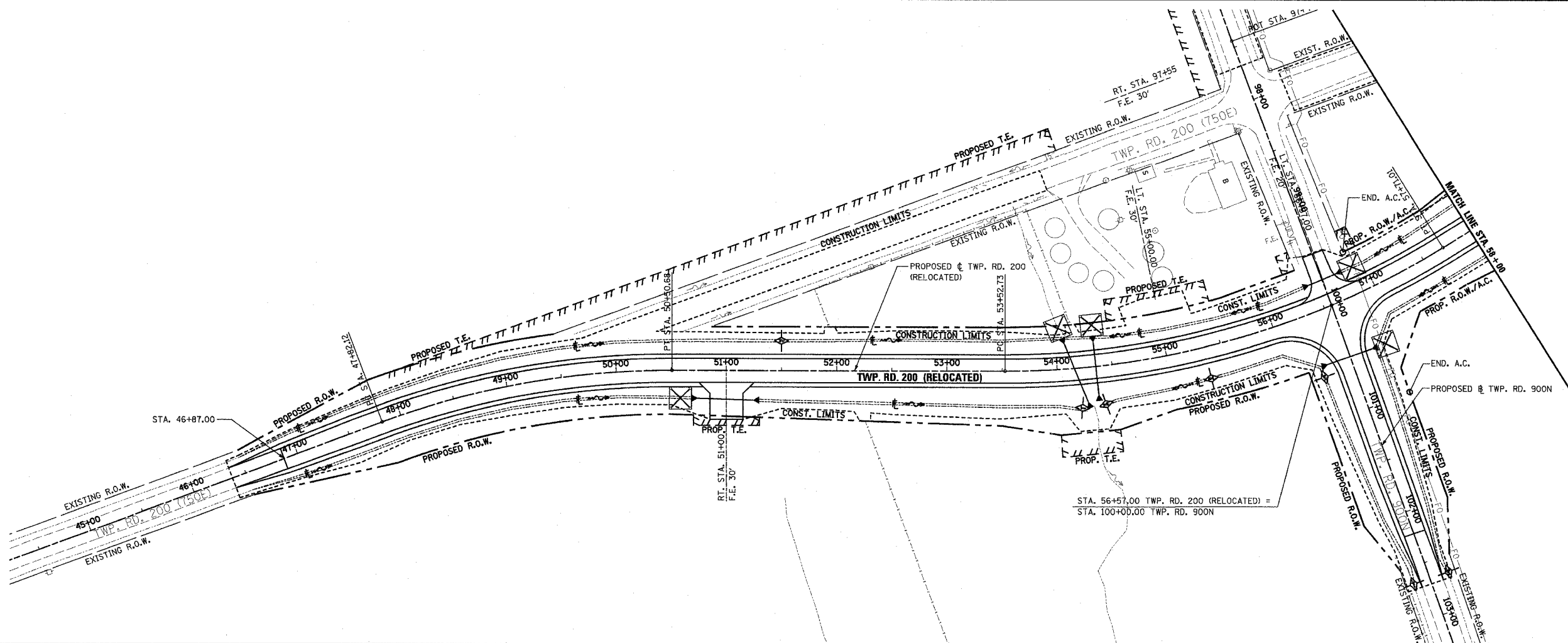


F.A.P. RTE.	SECTION	COUNTY	TOTAL SHEETS	SHEET NO.
315	55-2	McDONOUGH	1025	366
STA. 46+00 TO STA. 58+00				
FED. ROAD DIST. NO. 4 ILLINOIS FED. AID PROJECT				

- TEMPORARY EROSION CONTROL LEGEND**
- TEMPORARY DITCH CHECK
 - INLET AND PIPE PROTECTION
 - EROSION CONTROL BLANKET
 - HEAVY DUTY EROSION CONTROL BLANKET
 - AGGREGATE DITCH (TO BE PLACED UPON COMPLETION OF DITCH CUT)
 - PERIMETER EROSION BARRIER

PLAN	DATE	BY
REVIEWED		
DESIGNED		
PLOTTED		
CHECKED		
NO. OF WAY CHECKED		
FILE NAME		

PROFILE	DATE	BY
REVIEWED		
DESIGNED		
PLOTTED		
CHECKED		
NO. OF WAY CHECKED		
FILE NAME		



EROSION CONTROL PLAN AND PROFILE - TWP. RD. 200 (RELOCATED) - STA. 46+00 TO STA. 58+00 AND TWP. RD. 900N (EAST) STA. 99+00 TO STA. 104+00

20250315.DWG 4/15/2025 10:56:39 AM