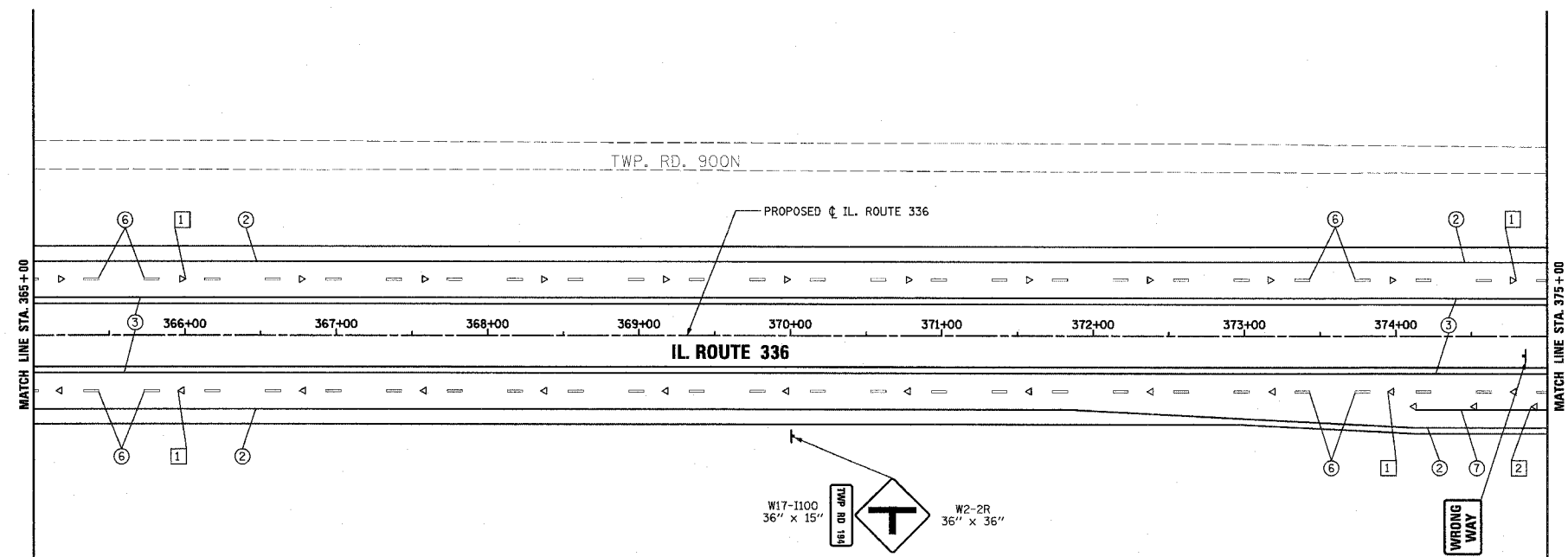
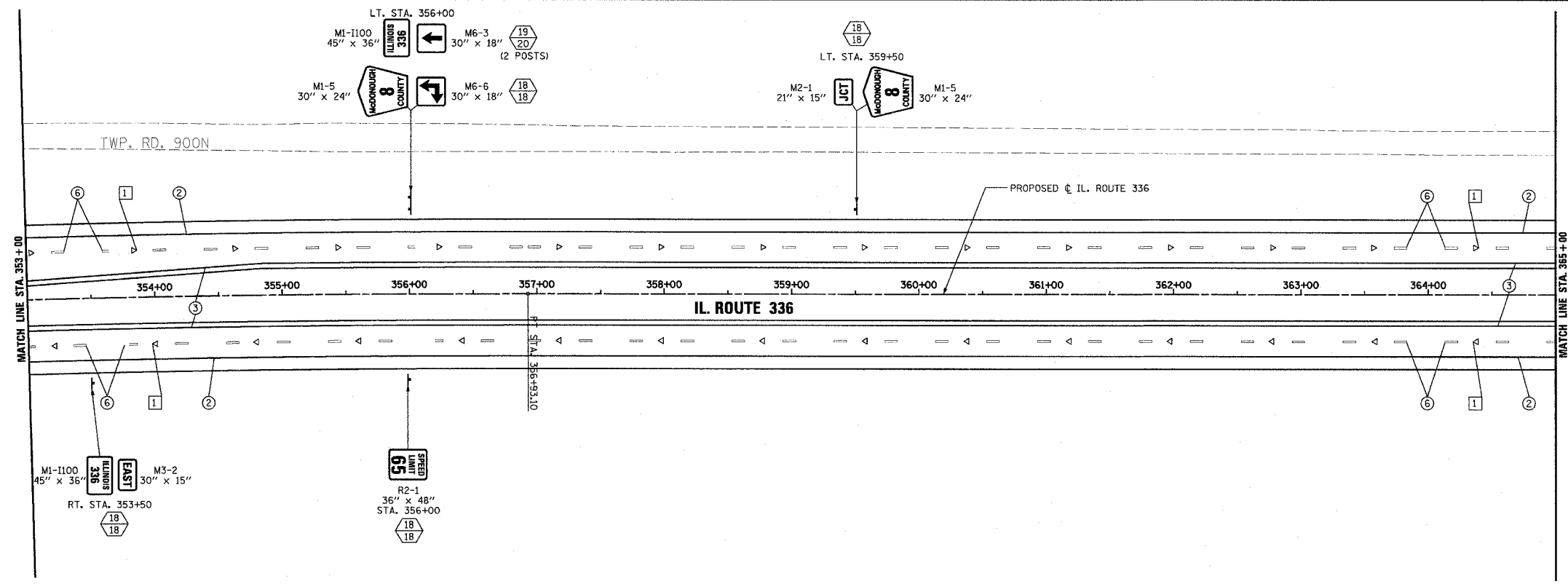


F.A.P. RTE.	SECTION	COUNTY	TOTAL SHEETS	SHEET NO.
315	55-2	McDONOUGH	1025	400
STA. 353+00		TO STA. 375+00		
FED. ROAD DIST. NO. 4 ILLINOIS FED. AID PROJECT				



**PAVEMENT MARKING LEGEND**

- ① EPOXY PAVEMENT MARKING - LETTERS AND SYMBOLS
- ② EPOXY PAVEMENT MARKING - LINE 4" WHITE SOLID
- ③ EPOXY PAVEMENT MARKING - LINE 4" YELLOW SOLID
- ④ EPOXY PAVEMENT MARKING - LINE 4" YELLOW SOLID (DOUBLE LINE)
- ⑤ EPOXY PAVEMENT MARKING - LINE 4" YELLOW SKIP DASH
- ⑥ PREFORMED PLASTIC PAVEMENT MARKING - LINE 6" WHITE SKIP DASH
- ⑦ EPOXY PAVEMENT MARKING - LINE 8" WHITE SOLID
- ⑧ EPOXY PAVEMENT MARKING - LINE 8" WHITE SKIP DASH
- ⑨ EPOXY PAVEMENT MARKING - LINE 12" WHITE SOLID
- ⑩ EPOXY PAVEMENT MARKING - LINE 12" YELLOW SOLID
- ⑪ EPOXY PAVEMENT MARKING - LINE 24" WHITE SOLID (STOP BAR)

1. PAVEMENT MARKINGS SHALL BE IN ACCORDANCE WITH DISTRICT CADD DETAILS - STANDARD 780001.

**RAISED REFLECTIVE PAVEMENT MARKERS (RRPM) LEGEND**

- ① ▲ ONE-WAY CRYSTAL MARKER AT 80' CENTERS
- ② ▲ ONE-WAY CRYSTAL MARKER AT 40' CENTERS
- ③ ▲ ONE-WAY CRYSTAL MARKER AT 20' CENTERS
- ④ ▲ ONE-WAY AMBER MARKER AT 40' CENTERS
- ⑤ ▲ ONE-WAY AMBER MARKER AT 20' CENTERS
- ⑥ ◆ TWO-WAY AMBER MARKER AT 40' CENTERS

**SIGN POST LEGEND**

WOOD POST LENGTH

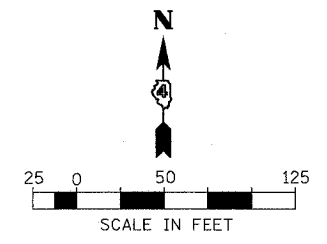
OFFSET FROM EDGE OF PAVEMENT

REVISIONS	
NAME	DATE

ILLINOIS DEPARTMENT OF TRANSPORTATION  
**PAVEMENT MARKING AND SIGNING**  
**IL. ROUTE 336**  
**STA. 353+00 TO STA. 375+00**

DATE 3/30/06

DRAWN BY  
CHECKED BY



3/30/06 11:00 AM