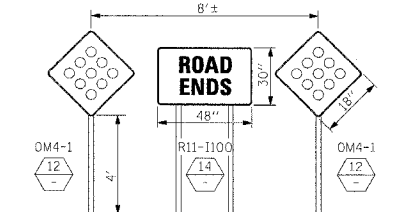
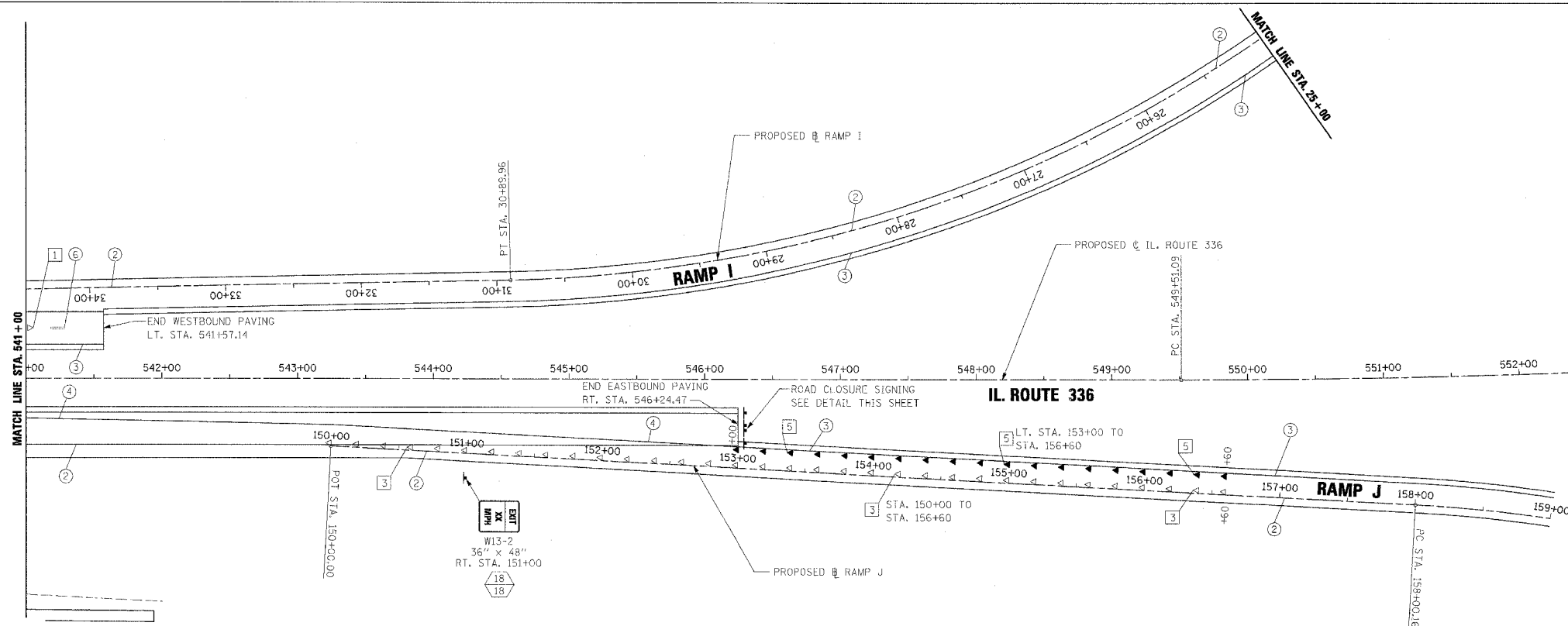
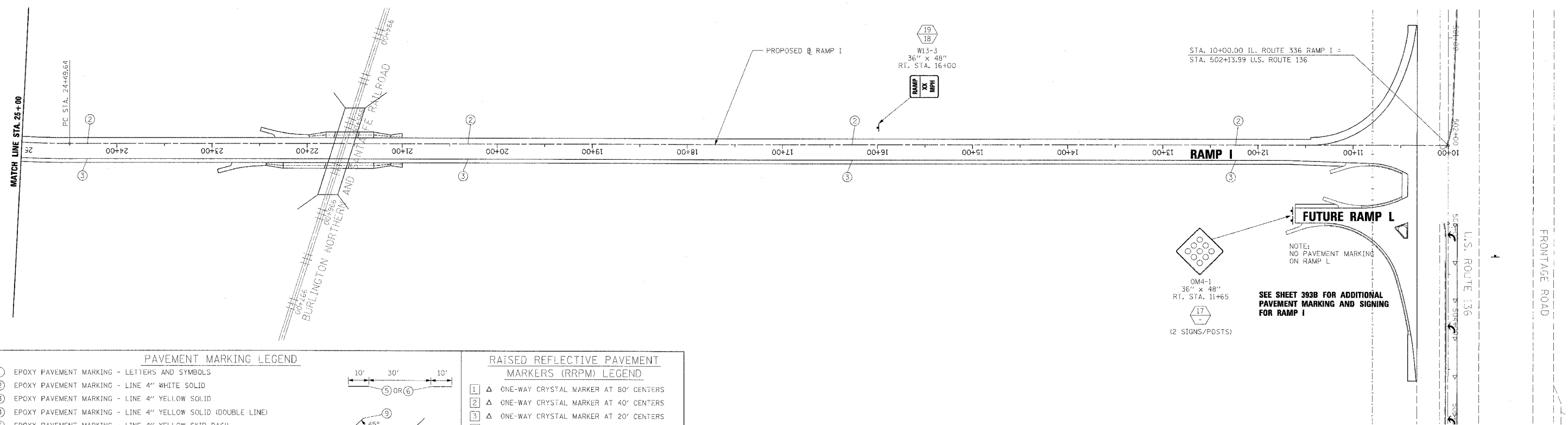


F.A.P. RTE.	SECTION	COUNTY	TOTAL SHEETS	SHEET NO.
315	55-2	MCDONOUGH	1025	408
STA. 541+00		TO STA. 546+30		
FED. ROAD DIST. NO. 4 ILLINOIS FED. AID PROJECT				



ROAD CLOSURE SIGNING DETAIL
EASTBOUND LANES RT. STA. 546+30

SEE SHEET 393A FOR ADDITIONAL PAVEMENT MARKING AND SIGNING FOR RAMP J



NOTE:
NO PAVEMENT MARKING ON RAMP L

SEE SHEET 393B FOR ADDITIONAL PAVEMENT MARKING AND SIGNING FOR RAMP I

PAVEMENT MARKING LEGEND

- ① EPOXY PAVEMENT MARKING - LETTERS AND SYMBOLS
- ② EPOXY PAVEMENT MARKING - LINE 4" WHITE SOLID
- ③ EPOXY PAVEMENT MARKING - LINE 4" YELLOW SOLID
- ④ EPOXY PAVEMENT MARKING - LINE 4" YELLOW SOLID (DOUBLE LINE)
- ⑤ EPOXY PAVEMENT MARKING - LINE 4" YELLOW SKIP DASH
- ⑥ PREFORMED PLASTIC PAVEMENT MARKING - LINE 6" WHITE SKIP DASH
- ⑦ EPOXY PAVEMENT MARKING - LINE 8" WHITE SOLID
- ⑧ EPOXY PAVEMENT MARKING - LINE 8" WHITE SKIP DASH
- ⑨ EPOXY PAVEMENT MARKING - LINE 12" WHITE SOLID
- ⑩ EPOXY PAVEMENT MARKING - LINE 12" YELLOW SOLID
- ⑪ EPOXY PAVEMENT MARKING - LINE 24" WHITE SOLID (STOP BAR)

1. PAVEMENT MARKINGS SHALL BE IN ACCORDANCE WITH DISTRICT CADD DETAILS - STANDARD 780001.

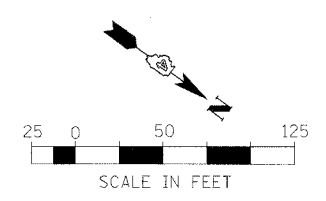
RAISED REFLECTIVE PAVEMENT MARKERS (RRPM) LEGEND

- ① ▲ ONE-WAY CRYSTAL MARKER AT 80' CENTERS
- ② ▲ ONE-WAY CRYSTAL MARKER AT 40' CENTERS
- ③ ▲ ONE-WAY CRYSTAL MARKER AT 20' CENTERS
- ④ ▲ ONE-WAY AMBER MARKER AT 40' CENTERS
- ⑤ ▲ ONE-WAY AMBER MARKER AT 20' CENTERS
- ⑥ ◆ TWO-WAY AMBER MARKER AT 40' CENTERS

SIGN POST LEGEND

WOOD POST LENGTH

OFFSET FROM EDGE OF PAVEMENT



REVISIONS	
NAME	DATE

ILLINOIS DEPARTMENT OF TRANSPORTATION

PAVEMENT MARKING AND SIGNING
IL. ROUTE 336 - STA. 541+00 TO STA. 546+30
RAMP I - STA. 10+00 TO STA. 34+50
RAMP J - STA. 150+00 TO 159+00

DATE 3/30/06

DRAWN BY
CHECKED BY